



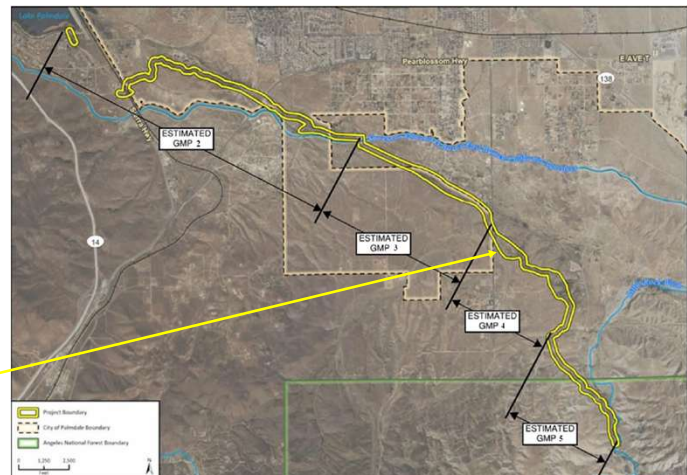
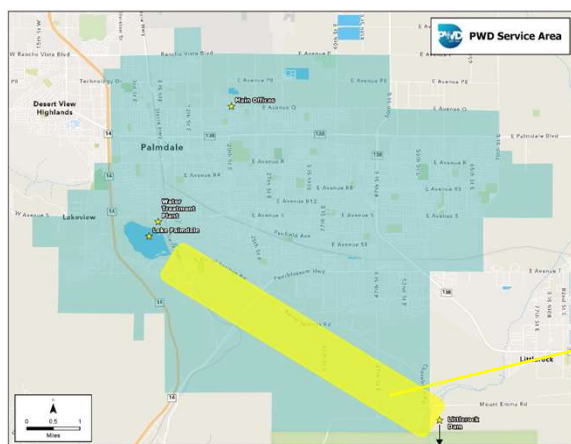
# ENVIRONMENTAL MONITORING WITH ESA FOR THE PALMDALE DITCH CONVERSION PROJECT

Board of Directors Meeting  
July 14, 2025



1

## Location Map



2

## ESA Proposed Services

- Pre-construction biological surveys:
  - Burrowing owl, nesting birds, reptiles, woodrats, bats
- Cultural documentation: HAER-style survey of the historic ditch
- Worker environmental sensitivity training
- Daily on-site monitoring:
  - Up to 65 days (biological)
  - Up to 88 days (archaeological/paleontological)
- Regulatory reporting (CDFW, RWQCB)
- Optional services: Phase II monitoring, Joshua Tree relocation



3

## Fee Breakdown

Task No.	Task	Amount
1	Project Management, Meetings, and Coordination	\$54,168
2	Pre-con Evaluation, Surveys, Notifications	\$178,879
3	Construction Phase Services	\$976,298
4	Post Construction Phase Reporting Services	\$38,772
5	Contingency for Unanticipated Discoveries	\$47,942
	Subtotal	\$1,296,059
	Contingency	\$150,000
	Total:	\$1,446,059
	Rounded Up Total	\$1,447,000

- ✓ This item serves Strategic Initiative No. 1 – Water Resource Reliability and No. 3 – Systems Efficiency. This item directly relates to the District’s Mission Statement.



4

## Recommendation

- Staff recommends the Board approve authorization of the General Manager to enter into an agreement with Environmental Science Associates (ESA) for environmental monitoring services related to the Palmdale Ditch Conversion Project in the not-to-exceed amount of \$1,447,000.00.



PALMDALE WATER DISTRICT  
A CENTURY OF SERVICE