



PALMDALE WATER DISTRICT
A CENTURY OF SERVICE

June 4, 2025

BOARD OF DIRECTORS

W. SCOTT KELLERMAN
Division 1

DON WILSON
Division 2

CYNTHIA SANCHEZ
Division 3

KATHY MAC LAREN-GOMEZ
Division 4

VINCENT DINO
Division 5

DENNIS D. LaMOREAUX
General Manager

ALESHIRE & WYNDR LLP
Attorneys



**AGENDA FOR REGULAR MEETING
OF THE BOARD OF DIRECTORS
OF THE PALMDALE WATER DISTRICT
TO BE HELD AT 2029 EAST AVENUE Q, PALMDALE**

MONDAY, JUNE 9, 2025

6:00 p.m.

NOTES: To comply with the Americans with Disabilities Act, to participate in any Board meeting please contact Danielle Henry at 661-947-4111 x1059 at least 48 hours prior to a Board meeting to inform us of your needs and to determine if accommodation is feasible.

Additionally, an interpreter will be made available to assist the public in making **comments** under Agenda Item No. 4 and any action items where public input is offered during the meeting if requested at least 48 hours before the meeting. Please call Danielle Henry at 661-947-4111 x1059 with your request. (PWD Rules and Regulations Section 4.03.1 (c))

Adicionalmente, un intérprete estará disponible para ayudar al público a hacer **comentarios** bajo la sección No. 4 en la agenda y cualquier elemento de acción donde se ofrece comentarios al público durante la reunión, siempre y cuando se solicite con 48 horas de anticipación de la junta directiva. Por favor de llamar Danielle Henry al 661-947-4111 x1059 con su solicitud. (PWD reglas y reglamentos sección 4.03.1 (c))

Agenda item materials, as well as materials related to agenda items submitted after distribution of the agenda packets, are available for public review at the District's office located at 2029 East Avenue Q, Palmdale or on the District's website at <https://www.palmdalewater.org/governance/board-activity/2025-meeting-agendas-minutes/> (Government Code Section 54957.5). Please call Danielle Henry at 661-947-4111 x1059 for public review of materials.

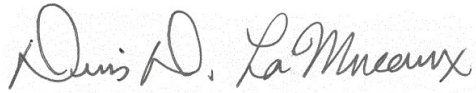
PUBLIC COMMENT GUIDELINES: The prescribed time limit per speaker is three-minutes. Please refrain from public displays or outbursts such as unsolicited applause, comments, or cheering. Any disruptive activities that substantially interfere with the ability of the District to conduct its meeting will not be permitted, and offenders will be requested to leave the meeting. (PWD Rules and Regulations, Appendix DD, Sec. IV.A.)

Each item on the agenda shall be deemed to include any appropriate motion, resolution, or ordinance to take action on any item.

- 1) Pledge of Allegiance/Moment of Silence.
- 2) Roll Call.
- 3) Adoption of Agenda.
- 4) Public Comments for Non-Agenda Items.

- 5) Presentations:
 - 5.1) Legislative Updates. (Public Affairs Director Shay/Representatives for Antelope Valley State Legislators)
- 6) Action Items - Consent Calendar (The public shall have an opportunity to comment on any action item on the Consent Calendar as the Consent Calendar is considered collectively by the Board of Directors prior to action being taken.)
 - 6.1) Approval of Minutes of Regular Board Meeting held May 27, 2025.
 - 6.2) Payment of Bills for June 9, 2025.
- 7) Action Items - Action Calendar (The public shall have an opportunity to comment on any action item as each item is considered by the Board of Directors prior to action being taken.)
 - 7.1) Consideration and Possible Action on Adoption of the 2025-2026 Annual Water Supply and Demand Assessment. (No Budget Impact – Resource and Analytics Director Bolanos)
 - 7.2) Consideration and Possible Action on Authorizing the General Manager to Approve Payment of Remaining Fees for Clean Water Act Section 401 Water Quality Certification – Palmdale Ditch Conversion Project. (\$157,603.00 – Budgeted – Project No. 21-613 – Engineering Manager Bader)
 - 7.3) Consideration and Possible Action on Approval of Western Joshua Tree Incidental Take Permit Fee from the California Department of Fish and Wildlife. (\$558,000.00 – Budgeted – Project No. 21-613 – Engineering Manager Bader)
 - 7.4) Consideration and Possible Action to Reschedule or Cancel the August 25, 2025 Regular Board Meeting. (No Budget Impact – General Manager LaMoreaux)
 - 7.5) Consideration and Possible Action on Authorization of the Following Conferences, Seminars, and Training Sessions for Board and Staff Attendance Within Budget Amounts Previously Approved in the 2025 Budget:
 - a) None at This Time.
- 8) Information Items:
 - 8.1) Reports of Directors:
 - a) Standing Committees; Organization Appointments; Agency Liaisons:
 - 1) Palmdale Fin & Feather Club Meeting – June 7. (Director Wilson/Director Kellerman, Alt.)
 - b) General Meetings Reports of Directors.
 - 8.2) Report of General Manager.
 - a) Department Activity Updates:
 - 1) Resource and Analytics Department. (Resource and Analytics Director Bolanos)
 - 8.3) Report of General Counsel.

- 9) Board Members' Requests for Future Agenda Items.
- 10) Adjournment.

A handwritten signature in dark ink, reading "Dennis D. LaMoreaux". The signature is fluid and cursive, with the first name "Dennis" and last name "LaMoreaux" clearly legible.

DENNIS D. LaMOREAUX,
General Manager

DDL/dh

MINUTES OF REGULAR MEETING OF THE BOARD OF DIRECTORS OF THE PALMDALE WATER DISTRICT, MAY 27, 2025:

A regular meeting of the Board of Directors of the Palmdale Water District was held Tuesday, May 27, 2025, at 2029 East Avenue Q, Palmdale, California, in the Board Room of the District Office. President, Kathy Mac Laren-Gomez, called the meeting to order at 6:01 p.m.

1) Pledge of Allegiance/Moment of Silence in Memory of Antelope Valley Press Reporter, Allison Gatlin .

At the request of President Mac Laren-Gomez, Finance Manager Hoffmeyer led the Pledge of Allegiance followed by a moment of silence in memory of Antelope Valley Press Reporter, Allison Gatlin.

2) Roll Call.

Attendance:

Kathy Mac Laren-Gomez, President
Scott Kellerman, Vice President
Don Wilson, Treasurer
Vincent Dino, Secretary
Cynthia Sanchez, Assistant Secretary

Others Present:

Dennis LaMoreaux, General Manager
Scott Rogers, Assistant General Manager
Bethany Burgess, Assistant General Counsel
Dennis Hoffmeyer, Finance Manager
Shadi Bader, Engineering Manager
Wendell Wall, Facilities Manager
Jillian Benci-Woodward, Senior Engineer
Danielle Henry, Executive Assistant
0 members of the public

3) Adoption of Agenda.

It was moved by Director Dino, seconded by Director Wilson, and unanimously carried by all members of the Board of Directors present at the meeting to adopt the agenda, as written.

4) Public Comments for Non-Agenda Items.

There were no public comments for non-agenda items.

5) Presentations:

5.1) None at This Time.

There were no presentations.

6) Action Items – Consent Calendar: (The Public Shall Have an Opportunity to Comment on Any Action Item on the Consent Calendar as the Consent Calendar is Considered Collectively by the Board of Directors Prior to Action Being Taken.)

6.1) Approval of Minutes of Regular Board Meeting held April 28, 2025.

6.2) Ratification of Payment of Bills for May 12, 2025.

6.2) Payment of Bills for May 27, 2025.

President Mac Laren-Gomez announced the items included in the Consent Calendar after which it was moved by Director Kellerman, seconded by Director Sanchez, and unanimously carried by all members of the Board of Directors present at the meeting to approve those items included in the Consent Calendar.

7) Action Items - Action Calendar (The Public Shall Have an Opportunity to Comment on Any Action Item as Each Item is Considered by the Board of Directors Prior to Action Being Taken.)

7.1) Consideration and Possible Action on Ratification of Amendment No. 2 to Contract No. 2025-002 with South West Pump and Drilling, Inc. for Well No. 15A Pump Services. (\$67,000.00 – Non-Budgeted – Facilities Manager Wall)

Facilities Manager Wall provided a brief overview of the production history and rehabilitation of Well No. 15A, including the scope of work for the additional tasks of test pumping and redeveloping the well, after which it was moved by Director Dino, seconded by Director Wilson, and unanimously carried by all members of the Board of Directors present at the meeting to approve ratification of Amendment No. 2 to Contract No. 2025-002 with South West Pump and Drilling, Inc. for Well No. 15A Pump Services in the amount of \$67,000.00.

7.2) Public Hearing Regarding Proposed Increase in Directors' Compensation Paid from \$220.00 to \$255.00 for Each Day's Attendance at Approved Meetings or Each Day's Service Rendered as a Member of the Board of Directors. (Potential 2025 Budget Increase of \$8,750.00/General Counsel Early)

Assistant General Counsel Burgess provided an overview of Ordinance No. 25-1 and the legal requirements for increasing Directors' compensation and stated that the

proposed Ordinance would become effective sixty days after the date of approval after which it was moved by Director Wilson, seconded by Director Dino, and unanimously carried by all members of the Board of Directors present at the meeting to open the Public Hearing regarding an increase in Directors' compensation paid from \$220.00 to \$255.00 for each day's attendance at approved meetings or each day's service rendered as a member of the Board of Directors.

President Mac Laren-Gomez then asked for any public comments. Hearing no public comments, it was moved by Director Wilson, seconded by Director Kellerman, and unanimously carried by all members of the Board of Directors present at the meeting to close the Public Hearing regarding an increase in Directors' compensation paid from \$220.00 to \$255.00 for each day's attendance at approved meetings or each day's service rendered as a member of the Board of Directors.

7.3) Consideration and Possible Action on Ordinance No. 25-1 being an Ordinance of the Board of Directors of the Palmdale Water District Authorizing an Increase in Directors' Compensation Paid from \$220.00 to \$255.00 for Each Day's Attendance at Approved Meetings or Each Day's Service Rendered as a Member of the Board of Directors. (Potential 2025 Budget Increase of \$8,750.00/General Counsel Early)

It was moved by Director Dino, seconded by Director Kellerman, and unanimously carried by all members of the Board of Directors present at the meeting to approve Ordinance No. 25-1 being an Ordinance of the Board of Directors of the Palmdale Water District Authorizing an Increase in Directors' Compensation Paid from \$220.00 to \$255.00 for Each Day's Attendance at Approved Meetings or Each Day's Service Rendered as a Member of the Board of Directors.

Ordinance No. 25-1 is hereby made a portion of the minutes of this meeting.

7.4) Consideration and Possible Action on Authorization of the Following Conferences, Seminars, and Training Sessions for Board and Staff Attendance within Budget Amounts Previously Approved in the 2025 Budget:

a) **American Society of Civil Engineers (ASCE) Conceptual Estimating for Engineers: Planning and Design Webcast to be held June 11-12, 2025.**

b) **ASCE: Pumping Systems Hydraulic Design for Civil Engineers Webcast to be held September 17-19, 2025.**

General Manager LaMoreaux provided a brief overview of the proposed webcast trainings for Engineering staff after which it was moved by Director Kellerman, seconded by Director Sanchez, and unanimously carried by all members of the Board of Directors present at the meeting to approve the following conferences, seminars, and training sessions for Board and staff attendance within budget amounts previously approved in the 2025 Budget: American Society of Civil Engineers (ASCE) Conceptual Estimating for Engineers: Planning and Design Webcast to be held June 11-12, 2025 and ASCE: Pumping Systems Hydraulic Design for Civil Engineers Webcast to be held September 17-19, 2025.

8) Information Items:

8.1) Reports of Directors:

a) Standing Committees; Organization Appointments; Agency Liaisons:

**1) Antelope Valley East Kern Water Agency (AVEK) Meetings.
(Director Dino, Board Liaison/President Mac Laren-Gomez, Alt.)**

Director Dino reported that on May 6, he attended the AVEK Board Meeting where they approved continuation of remote Board Meeting participation for members of the public.

2) Palmdale Fin & Feather Club Meeting – May 3 & 17. (Director Wilson/Director Kellerman, Alt.)

Directors Wilson and Kellerman stated that they did not attend the May 3 or May 17 Palmdale Fin & Feather Club Meetings.

3) Special Districts Association of North Los Angeles County (SDANLAC) Board Meeting – May 7. (Director Dino, CSDA Chapter President)

Director Dino reported that on May 7, he attended the SDANLAC Board Meeting where they discussed the sponsor, topics, and speakers of the membership luncheon to be held on June 18, 2025 at the IBEW Local 11 in Palmdale.

4) Finance Committee Meeting – May 20. (Director Wilson, Chair/Director Kellerman/Director Sanchez, Alt.)

Director Wilson reported that on May 20, he attended the Finance Committee Meeting and that a written report will be distributed.

b) General Meetings Reports of Directors.

Director Kellerman reported that on May 5 & 6, he attended Littlerock Reservoir Ad Hoc Committee Meetings; that on May 12-15, he attended the 2025 ACWA Spring Conference in Monterey; that on May 20, he attended the Finance Committee Meeting; that on May 22, he attended a Board Briefing; and that on May 27, he is attending the PWD Regular Board Meeting.

Director Wilson reported that on May 8, he attended his Coffee with a Director event; that on May 12-15, he attended the 2025 ACWA Spring Conference in Monterey and enjoyed the motivational speakers; that on May 20, he attended the Finance Committee Meeting; and that on May 22, he attended a Board Briefing.

Director Sanchez reported that on May 12-15, she attended the 2025 ACWA Spring Conference in Monterey; that on May 22, she attended a Board Briefing; and that on May 27, she is attending the PWD Regular Board Meeting.

Director Mac Laren-Gomez reported that on April 1, she attended a CSDA webinar regarding the ABC's of SDLF 2025 update; that on April 29, she attended an AVEK Board Meeting; that on May 5 & 6, she attended Littlerock Reservoir Ad Hoc Committee Meetings, that on May 12-15, she attended the 2025 ACWA Spring Conference in Monterey; that on May 22, she attended a Board Briefing; and that on May 27, she attended a Public Water Suppliers Meeting.

Director Dino reported that on May 6, he attended an AVEK Board Meeting; that on May 7, he attended a SDANLAC Board Meeting; that on May 12-15, he attended the 2025 ACWA Spring Conference in Monterey; that on May 20, he attended a CSDA webinar; that on May 21, he attended a CSDA webinar; that on May 22, he attended a Board Briefing; and that on May 27, he is attending the PWD Regular Board Meeting.

8.2) Report of General Manager.

a) Department Activity Updates:

1) Facilities Department. (Facilities Manager Wall)

Facilities Manager Wall provided a detailed update of the Facilities Department's current and projected activities including valve replacements, infrastructure installations, repairs and inspections, meter exchanges, fleet replacements and purchases, staffing, and the rehabilitation status of Well Nos. 8A, 11A and 15A and stated that Facilities staff assisted with the winter maintenance and the repairs and inspection of the sluice gates at the Leslie O. Carter Water Treatment Plant; that staff presented at the annual Water Ambassador Academy; and that the new Electric Vehicle Charging Stations (EVCS) were activated on May 1, 2025 followed by a brief discussion of the curtain replacement in the Clearwell.

b) May 2025 Written Report of Activities through April 2025.

General Manager LaMoreaux reported that the first round of candidate interviews for the Finance Manager position will take place next week with an external panel and that he is working towards the submittal of a Request for Proposals (RFP) for the Strategic Plan Update.

He then stated that a written report was provided this evening and highlighted the District's first report submitted under the new "Making Conservation a Way of Life" regulations and credited the District's water budget rate structure for being approximately 5% below the water budget set by these regulations.

He then reported that there has been just one mainline leak to date this year, and that staff continues to work with Joshua Acres Mutual Water Company and legal counsel regarding future service for their customers.

8.3) Report of General Counsel.

Assistant General Counsel Burgess stated that she has no report.

9) Board Members' Requests for Future Agenda Items.

Director Sanchez requested that staff prepare a fact sheet and talking points for the Directors regarding District-related matters and projects followed by a brief conversation of potable water uses.

There were no requests for future agenda items.

10) Adjournment.

There being no further business to come before the Board, the meeting was adjourned at 6:43 p.m.

Secretary

DRAFT



BOARD MEMORANDUM

DATE: June 9, 2025
TO: **BOARD OF DIRECTORS**
FROM: Mrs. Claudia Bolanos, Resource and Analytics Director
VIA: Mr. Dennis D. LaMoreaux, General Manager
RE: ***CONSIDERATION AND POSSIBLE ACTION ON ADOPTION OF THE 2025-2026 ANNUAL WATER SUPPLY AND DEMAND ASSESSMENT. (NO BUDGET IMPACT – RESOURCE AND ANALYTICS DIRECTOR BOLANOS)***

Recommendation:

Staff recommend that the Board adopt the 2025-2026 Annual Water Supply and Demand Assessment (AWSDA) in compliance with Water Code Section 10632.1 and authorize its submission to the California Department of Water Resources by the deadline.

Alternative Options:

There is no alternative option.

Impact of Taking No Action:

Failure to submit the Annual Water Supply and Demand Assessment (AWSDA) by the July 1st deadline would put Palmdale Water District (PWD) in violation of Water Code Section 10632.1, potentially exposing PWD to regulatory non-compliance, increased state oversight, and reduced eligibility for state funding and grants tied to reporting compliance.

Background:

Provisions in Water Code Section 10632.1 require that urban water suppliers, such as PWD, submit an Annual Water Supply and Demand Assessment (AWSDA) to the Department of Water Resources (DWR) each year by July 1. For agencies that rely on imported supplies from the State Water Project (SWP), the AWSDA must be submitted within 14 days of receiving final allocations, or by July 1, whichever is later.

The AWSDA requirement began in 2022. This marks PWD's fourth annual assessment, which evaluates the current year's supply reliability and that of one subsequent dry year. The purpose is to determine whether any shortage levels need to be declared and what response actions, if any, should be implemented.

In 2024, PWD received a 40% final allocation from the State Water Project. For 2025, our allocation is 50%. Based on the final AWSDA calculations, PWD has sufficient supplies to meet projected demands for both 2025 and 2026, and no shortage response actions are required at this time.

June 9, 2025

Strategic Plan Initiative/Mission Statement:

This item is under Strategic Initiative No. 1 – Water Resource Reliability.
This item directly relates to the District’s Mission Statement.

Budget:

No budget impact.

Supporting Documents:

- 2025-2026 Annual Water Supply and Demand Assessment

Table 1. Annual Assessment Information	
Type of Supplier (Required to check one or two)	
Supplier is a Wholesaler	<input type="checkbox"/>
Supplier is a Retailer	<input checked="" type="checkbox"/>
If you are both a wholesaler and retailer, will you be submitting two separate reports or a combined report?	Number of Reports
Year Covered By This Shortage Report (Required)	
Start: July 1,	2025
End: June 30,	2026
Volume Unit for Reported Supply and Demand: (Must use the same unit throughout)	AF
Supplier's Annual Assessment Planning Cycle (Required)	
Start Month:	January
End Month:	December
Data Interval:	Monthly (12 data points per year)
Water Supplier's Contact Information (Required)	
Water Supplier's Name:	Palmdale Water District
Contact Name:	Elizama Penaloza
Contact Title:	Management Analyst
Street Address:	2029 East Avenue Q Palmdale CA
ZIP Code:	93550
Phone Number:	(661)456-1037
Email Address:	epenaloza@palmdalewater.org
Report Preparer's Contact Information (if different from above)	
Preparer's Organization Name:	
Preparer's Contact Name:	
Phone Number:	(XXX)XXX-XXXX
Email Address:	
Supplier's Water Shortage Contingency Plan	
WSCP Title	2020 Water Shortage Contingency Plan
WSCP Adoption Date	6/14/2021
Other Annual Assessment Related Activities	
Activity	Timeline/ Outcomes / Links / Notes
Annual Assessment/ Shortage Report Title:	Optional
Annual Assessment / Shortage Report Approval Date:	MM/DD/YYYY
Other Annual Assessment Related Activities:	Optional
(Add rows as needed)	

Table 2: Water Demands ¹						
Use Type		Start Year:	2025	Volumetric Unit Used ² :	AF	

Notes: List considered factors impacting demands

¹Projections are based on best available data at time of submitting the report and actual demand volumes could be different due to many factors.

²Units of measure (AF, CCF, MG) must remain consistent.

³When opting to provide other than monthly volumes (bi-monthly, quarterly, or annual), please see directions on entering data for Projected Water Demand in the Table Instructions.

[illegible]

	= From prior tables
	= Auto calculated

Table 3: Water Supplies¹[illegible]

Notes: List hydrological and regulatory conditions, infrastructure capabilities, and plausible constraints which may impact the water supplies

¹Projections are based on best available data at time of submitting the report and actual supply volumes could be different due to many factors.

²Units of measure (AF, CCF, MG) must remain consistent.

³When opting to provide other than monthly volumes (bi-monthly, quarterly, or annual), please see directions on entering data for Projected Water Supplies in the Table Instructions.

[illegible]

	= Auto calculated	
	= From prior tables	
	= For manual input	

Table 4(P): Potable Water Shortage Assessment ¹					Start Year: 2025	Volumetric Unit Used ² :						AF		
	Jul	Aug	Sep	Oct	Nov	Dec	Jan	Feb	Mar	Apr	May	Jun ³	Total	
Anticipated Unconstrained Demand	1853.6	2014.9	1874.3	1659.2	1416.6	1262.5	1091.3	965.1	932.5	969.2	1355.3	1606.1	17000.38	
Anticipated Total Water Supply	1934.0	2110.0	1945.0	1725.0	1475.0	1310.0	1140.0	1025.0	985.0	1020.0	1440.0	1685.0	17794.00	
Surplus/Shortage w/o WSCP Action	80.4	95.1	70.7	65.8	58.4	47.5	48.7	59.9	52.5	50.8	84.7	78.9	793.6	
% Surplus/Shortage w/o WSCP Action	4%	5%	4%	4%	4%	4%	4%	6%	6%	5%	6%	5%	5%	
State Standard Shortage Level	0	0	0	0	0	0	0	0	0	0	0	0	0	
Planned WSCP Actions ⁴														
Benefit from WSCP: Supply Augmentation													0.0	
Benefit from WSCP: Demand Reduction													0.0	
Revised Surplus/Shortage with WSCP	80.4	95.1	70.7	65.8	58.4	47.5	48.7	59.9	52.5	50.8	84.7	78.9	793.6	
% Revised Surplus/Shortage with WSCP	4%	5%	4%	4%	4%	4%	4%	6%	6%	5%	6%	5%	5%	

¹Assessments are based on best available data at time of submitting the report and actual volumes could be different due to many factors.

²Units of measure (AF, CCF, MG) must remain consistent.

³When optional monthly volumes aren't provided, verify Tables 2 and 3 use the same columns for data entry and are reflected properly in Table 4 and make sure to use those same columns to enter the benefits from Planned WSCP Actions. Please see directions on the shortage balancing exercise in the Table Instructions. If a shortage is projected, the supplier is highly recommended to perform a monthly analysis to more accurately identify the time of shortage.

⁴If you enter any WSCP Benefits, then you must enter the corresponding planned Actions into Table 5.

	= Auto calculated	
	= From prior tables	
	= For manual input	

Table 4(NP): Non-Potable Water Shortage Assessment ¹					Start Year: 2025	Volumetric Unit Used ² :						AF		
	Jul	Aug	Sep	Oct	Nov	Dec	Jan	Feb	Mar	Apr	May	Jun ³	Total	
Anticipated Unconstrained Demand: Non-Potable	0.0	0.0	0.0	0.0	0.0	0.0	0.0	0.0	0.0	0.0	0.0	0.0	0.00	
Anticipated Total Water Supply: Non-Potable	0.0	0.0	0.0	0.0	0.0	0.0	0.0	0.0	0.0	0.0	0.0	0.0	0.0	
Surplus/Shortage w/o WSCP Action: Non-Potable	0.0	0.0	0.0	0.0	0.0	0.0	0.0	0.0	0.0	0.0	0.0	0.0	0.0	
% Surplus/Shortage w/o WSCP Action: Non-Potable														
Planned WSCP Actions ⁴														
Benefit from WSCP: Supply Augmentation													0.0	
Benefit from WSCP: Demand Reduction													0.0	
Revised Surplus/Shortage with WSCP	0.0	0.0	0.0	0.0	0.0	0.0	0.0	0.0	0.0	0.0	0.0	0.0	0.0	
% Revised Surplus/Shortage with WSCP														

¹Assessments are based on best available data at time of submitting the report and actual volumes could be different due to many factors.

²Units of measure (AF, CCF, MG) must remain consistent.

³When optional monthly volumes aren't provided, verify Tables 2 and 3 use the same columns for data entry and are reflected properly in Table 4 and make sure to use those same columns to enter the benefits from Planned WSCP Actions. Please see directions on the shortage balancing exercise in the Table Instructions. If a shortage is projected, the supplier is highly recommended to perform a monthly analysis to more accurately identify the time of shortage.

⁴If you enter any WSCP Benefits, then you must enter the corresponding planned Actions into Table 5.

Table 5: Planned Water Shortage Response Actions					July 1, 2025	to June 30, 2026	
Anticipated Shortage Level Drop-down List of State Standard Levels (1 - 6) and Level 0 (No Shortage)	ACTIONS ¹ : Demand Reduction, Supply Augmentation, and Other Actions. (Drop-down List) These are the only categories that will be accepted by the WUEdata online submittal tool. Select those that apply.	Is action already being implemented? (Y/N)	How much is action going to reduce the shortage gap? (Optional)		When is shortage response action anticipated to be implemented ² ?		
			Enter Amount	(Drop-down List) Select % or Volume Unit	Start Month	End Month	
Add additional rows as needed							
0 (No Shortage)	No Actions						
	</						



BOARD MEMORANDUM

DATE: June 9, 2025

TO: **BOARD OF DIRECTORS**

FROM: Mr. Shadi Bader, Engineering Manager

VIA: Mr. Scott Rogers, Assistant General Manager

VIA: Mr. Dennis D. LaMoreaux, General Manager

RE: ***CONSIDERATION AND POSSIBLE ACTION ON AUTHORIZING THE GENERAL MANAGER TO APPROVE PAYMENT OF REMAINING FEES FOR CLEAN WATER ACT SECTION 401 WATER QUALITY CERTIFICATION – PALMDALE DITCH CONVERSION PROJECT. (\$157,603.00 – BUDGETED – PROJECT NO. 21-613 – ENGINEERING MANAGER BADER)***

Recommendation:

Staff recommends that the Board authorize the General Manager to approve a payment of \$157,603.00 for the Palmdale Ditch Conversion Project for the State Water Resources Control Board's FY 2024–2025 Dredge or Fill Fee under Section 401 fees.

Alternative Options:

The alternative would be to not proceed with the payment of Section 401 fee.

Impact of Taking No Action:

The potential impact of taking no action could result in delays in the issuance of Section 401 Water Quality Certification for the Palmdale Ditch Conversion Project, which in turn would delay the start of construction of the Project.

Background:

The Lahontan Regional Water Quality Control Board has issued a draft Clean Water Act Section 401 Water Quality Certification for the Palmdale Ditch Conversion Project (WDID No. 6B192501002). The total application fee for this Project is \$161,815.00, based on 4.31 acres of discharge area at the FY 2024-2025 rate of \$37,544.00 per acre. On December 17, 2024, a fee in the amount of \$4,212.00 was received via the online payment system. The remaining fees are \$157,603.

Strategic Plan Initiative/Mission Statement:

This item is under Strategic Initiative No. 1 – Water Resource Reliability and No. 3 – Systems Efficiency. This item directly relates to the District's Mission Statement.

BOARD OF DIRECTORS
PALMDALE WATER DISTRICT
VIA: Mr. Scott Rogers, Assistant General Manager
Mr. Dennis LaMoreaux, General Manager
RE: Section 401 Payment Request – Palmdale Ditch Conversion Project

June 9, 2025

Budget:

This item is budgeted under Project No. 21-613

Supporting Documents:

- Board Presentation
- Draft Board Order No. R6V-2025-XXXX, Granting Clean Water Act Section 401 Water Quality Certification for the Palmdale Ditch Conversion Project
- State Water Resources Control Board's FY 2024-2025 Dredge or Fill Fee Calculator Form



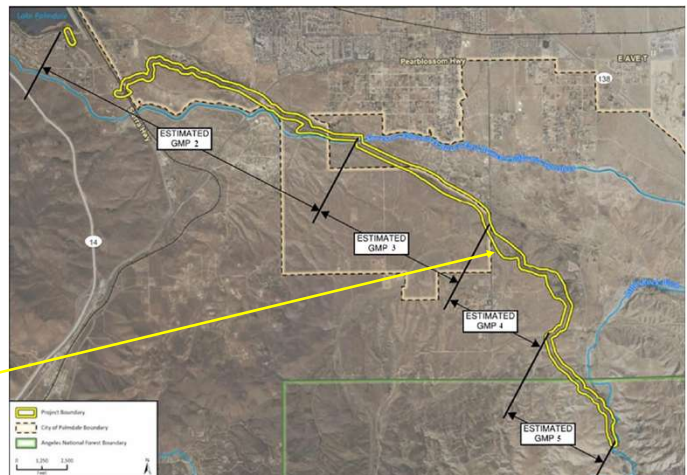
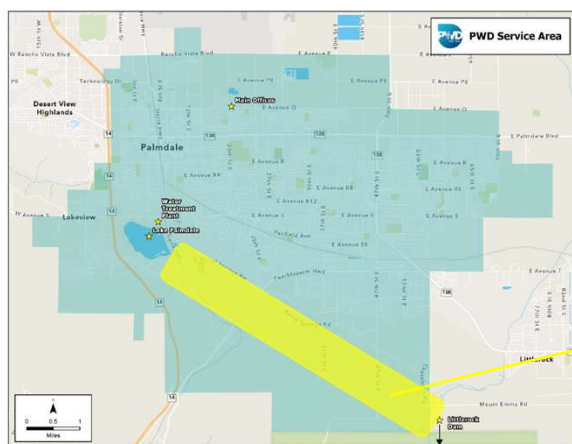
SECTION 401 PAYMENT REQUEST FOR THE CONSTRUCTION OF THE PALMDALE DITCH CONVERSION PROJECT

Board of Directors Meeting
June 9, 2025



1

Location Map



2

Regulatory Requirements

- Clean Water Act Section 401 Water Quality Certification (WQC) Required
- Draft WQC issued on May 22, 2025
- Waste Discharge Identification Number:
 - WDID No. 6B192501002



3

This item is under Strategic Initiative No. 1 – Water Resource Reliability and No. 3 – Systems Efficiency. This item directly relates to the District's Mission Statement.

Fee Breakdown

Description	Amount
Total Required Fee	\$161,815
Paid (December 17, 2024)	\$4,212
Remaining Balance	\$157,603

- Fee is based on 4.31 Acres impacted x \$37,544 per acre = \$161,815
- Application fee = \$4,212
- ✓ This item serves Strategic Initiative No. 1 – Water Resource Reliability and No. 3 – Systems Efficiency. This item directly relates to the District's Mission Statement.



4

Recommendation

- Staff recommends that the Board of Directors authorize the General Manager to approve a payment of \$157,603 for the Palmdale Ditch Conversion Project for the State Water Resources Control Board's FY 2024–2025 Dredge or Fill Fee under Section 401 fees.

Lahontan Regional Water Quality Control Board

May 21, 2025

WDID 6B192501002

Scott Rogers
Palmdale Water District
2029 East Avenue Q
Palmdale, CA 93550
srogers@palmdalewater.org

Board Order No. R6V-2025-XXXX, Granting Clean Water Act Section 401 Water Quality Certification, Palmdale Ditch Conversion Project, Los Angeles County

Lahontan Regional Water Quality Control Board (Water Board) staff has received a complete Clean Water Act (CWA) section 401 Water Quality Certification (WQC) application and application filing fee from the Palmdale Water District (Applicant) for the Palmdale Ditch Conversion Project (Project) in Los Angeles County. The application was received on March 21, 2025, and deemed complete on **May 7, 2025**. This WQC hereby assigns this Project Waste Discharge Identification (WDID) No. 6B192501002. Please use this reference number in all future correspondence regarding this Project.

Any person aggrieved by this action of the Water Board may petition the State Water Resources Control Board (State Water Board) to reconsider this WQC in accordance with Water Code section 13320 and California Code of Regulations (CCR), title 23, sections 2050 and 3867. The State Water Board must receive the petition within thirty (30) days after the date of this WQC, by 5:00 p.m. on the thirtieth day except if the thirtieth day following the date of this WQC falls on a Saturday, Sunday, or state holiday, the petition must be received by the State Water Board by 5:00 p.m. on the next business day. Copies of the law and regulations applicable to filing petitions may be found on the Internet at the [Water Quality Petitions](http://www.waterboards.ca.gov/public_notices/petitions/water_quality/) page: (http://www.waterboards.ca.gov/public_notices/petitions/water_quality/) or will be provided upon request.

PROJECT INFORMATION

Project details are listed in the following tables.

General Project Information

Category	Data
Applicant	Palmdale Water District
Agent	Brenna Vredevel
Project Name	Palmdale Ditch Conversion Project
Project Purpose and Description	The Project site consists of two discontinuous areas. The Project involves the conversion of approximately 7.2 miles of a channel to a buried 48-inch diameter pipeline made from reinforced concrete or high-density polyethylene. (see Enclosure 1). Approximately 0.1 mile of the channel currently consists of culvert crossings under various City and County roads. The Project involves inspection, rehabilitation, and replacement of these crossings, as needed. Temporary impacts to jurisdictional waters will result from equipment/machinery access associated with construction. Permanent impacts to waters of the State will result from the conversion from an earthen bottom channel to a pipeline and the rehabilitation of the culvert crossings.
Project Type	Utilities, Agriculture, Domestic, and Industrial Water Pipeline Conveyance and/or Supply
Project Address or other Locating Information	The Project is located adjacent to East Barrel Springs Road, Sierra Highway, Pearblossom Highway, Cheseboro Road, and Mt. Emma Road in the City of Palmdale, Los Angeles County.
Project Location Latitude/Longitude	Latitude: 34.527221 Longitude: - 118.055227 (Center)
Hydrologic Unit(s)	Antelope Hydrologic Unit (626.00), Lancaster Hydrologic Area (626.50)
Total Project Size	84.7 acres
Receiving Water(s) Name	Unnamed tributary to Lake Palmdale
Water Body Type(s)	Minor surface waters
Beneficial Uses	MUN, AGR, GWR, REC-1, REC-2, COMM, WARM, COLD, WILD
Potential Water Quality Impacts	Hydrogeomorphic changes in the flow regime on the Project site may result in downstream erosion, sedimentation, and/or siltation.
Federal Permit(s)	The Applicant has applied for U.S. Army Corps of Engineers (USACE) authorization to proceed under an individual permit, SPL-2024-00544-GSH, pursuant to CWA section 404.
Non-Compensatory Mitigation	During construction, the Applicant will follow Best Management Practices (BMPs) including construction storm water controls designed to minimize the short-term degradation of water quality. All temporary impacts will be restored to pre-Project conditions.

Category	Data
Compensatory Mitigation	The Applicant proposes to mitigate permanent stream impacts at a ratio of 1.9 to 1 by purchasing a combination of freshwater marsh (0.07 acres) and seasonal wetland upland buffer preservation credits (5.4 acres). Wetland impacts will be mitigated at a ratio of 5 to 1 by purchasing 0.3 acres of seasonal wetland upland buffer preservation credits from the Petersen Ranch Mitigation Bank. All credit purchases must occur prior to the completion of construction, and proof of purchase provided to the Water Board.
Application Fee and Fee Code	\$161,815 (4.31 acres x \$37,544 per discharge area acre)
Fees Received	\$4,212
Estimated Annual Fee ¹	\$3,540 (annual fee assessed each fiscal year or portion of a fiscal year during which discharges occur until the Water Board issues a Notice of Project Complete Letter to the Applicant).
¹ The actual Annual Fee will be calculated using the fee schedule in effect at the time the annual fee is assessed per California Code of Regulations, Title 23, section 2200(a)(3).	

Impacts of Fill and Excavation to Waters of the State

Water-body Type	Temporary Impacts			Permanent Physical Loss of Area			Permanent Degradation of Ecological conditions		
Units	Acres	Cubic Yards	Linear Feet	Acres	Cubic Yards	Linear Feet	Acres	Cubic Yards	Linear Feet
Lake									
Riparian Zone									
Stream Channel	1.40	6022	10211	0	0	0	2.85	14410	19542
Wetland	0	0	0	0	0	0	0.06	90	N/A

Mitigation for Permanent Degradation of Ecological Condition

Aquatic Resource Type	Units	Establishment	Re-establishment	Rehabilitation	Enhancement	Preservation
Lake	Acres					
Riparian Zone	Acres		0.07			
	Linear Feet					
Stream Channel	Acres					
	Linear Feet					
Wetland	Acres					5.7

CEQA COMPLIANCE

The Lahontan Water Board prepared a Negative Declaration for the adoption of General Board Order No. R6T-2003-0004. The Negative Declaration was certified by the Lahontan Water Board on January 8, 2003, in accordance with California Environmental Quality Act (CEQA Public Resources Code 21000, et seq.).

The Palmdale Water District prepared an Environmental Impact Report (EIR) for the Project. The EIR was prepared pursuant to the California Environmental Quality Act (CEQA Public Resources Code 21000, et seq.) and circulated under State Clearinghouse No. 2023080290. The EIR was certified on December 30, 2024, following public review.

CALIFORNIA ECOATLAS

It has been determined through regional, state, and national studies that tracking of mitigation/restoration projects must be improved to better assess the performance of these projects, following monitoring periods that last several years. In addition, to effectively carry out the State's Wetlands Conservation Policy of no net loss to wetlands, the State needs to closely track both aquatic habitat losses and mitigation/restoration project success. Therefore, the Applicant is required to provide Project information related to impacts and mitigation/restoration measures (see Additional Conditions of this WQC) to EcoAtlas using the [Project Tracker website](http://ptrack.ecoatlas.org) (<http://ptrack.ecoatlas.org>). Instructions and how to request a username and password can also be found at the Project Tracker website.

More information about the Water Board's [Clean Water Act \(CWA\) Section 401](http://www.waterboards.ca.gov/lahtontan/water_issues/programs/clean_water_act_401/index.shtml) requirements can be found at: (http://www.waterboards.ca.gov/lahtontan/water_issues/programs/clean_water_act_401/index.shtml). More information about EcoAtlas can be found at: www.ecoatlas.org.

SECTION 401 WATER QUALITY CERTIFICATION

Authority

CWA section 401 (33 U.S.C §1341) requires that any applicant for a federal license or permit, who plans to conduct any activity that may result in discharge of dredged or fill materials to waters of the U.S., must provide the permitting agency a certification from the state that the discharge will be in compliance with applicable water quality standards of the state in which the discharge will originate. The Applicant submitted a complete application and the fees required for WQC under CWA section 401 for the Project. The Applicant has applied for USACE authorization to proceed under an individual permit, SPL-2024-00544-GSH, pursuant to CWA section 404. CCR, title 23, section 3831(e) grants the Water Board Executive Officer the authority to grant or deny WQC for projects in accordance with CWA section 401. The Project qualifies for such WQC.

Standard Conditions

The following standard conditions are requirements of this WQC:

1. This WQC action is subject to modification or revocation upon administrative or judicial review, including review and amendment pursuant to Water Code section 13330 and CCR, title 23, section 3867 through section 3869.
2. This WQC action is not intended and must not be construed to apply to any discharge from any activity involving a hydroelectric facility requiring a Federal Energy Regulatory Commission (FERC) license unless the pertinent WQC application was filed pursuant to CCR title 23, section 3855(b) and the application specifically identified that a FERC license or amendment to a FERC license for a hydroelectric facility was being sought.
3. The WQC is conditioned upon total payment of the full fee required under CCR title 23, section 3833, unless otherwise stated in writing by the certifying agency.
4. Neither Project construction activities nor operation of the Project may cause a violation of the *Water Quality Control Plan for the Lahontan Region* (Basin Plan), may cause a condition or threatened condition of pollution or nuisance, or cause any other violation of the California Water Code (CWC).
5. The Project must be constructed and operated in accordance with that described in the WQC application and supporting documentation that was submitted to the Water Board. Deviation from the Project constitutes a violation of the conditions upon which this WQC was granted. Any significant changes to this Project that would have a significant or material effect on the findings, conclusions, or conditions of this WQC, including Project operation, must be submitted to the Executive Officer for prior review and written approval.
6. This WQC is subject to the acquisition of all local, regional, state, and federal permits and approvals as required by law. Failure to meet any conditions contained herein or any conditions contained in any other permit or approval issued by the state of California or any subdivision thereof may result in the revocation of this WQC and civil or criminal liability.
7. The Water Board may add to or modify the conditions of this WQC as appropriate to implement any new or revised water quality standards and implementation plans adopted or approved pursuant to the CWC or section 303 of the CWA, or as appropriate to coordinate the operations of this Project with other projects where coordination of operations is reasonably necessary to achieve water quality standards or protect the beneficial uses of water. Notwithstanding any more specific conditions in this WQC, the Project must be constructed and operated in a manner consistent with all water quality standards and implementation plans adopted or approved pursuant to the CWC or section 303 of the CWA.

8. This WQC does not authorize any act which results in the taking of a threatened or endangered species or any act which is now prohibited, or becomes prohibited in the future, under the California Endangered Species Act (Fish and Game Code sections 2050, et seq.) or the federal Endangered Species Act (16 USC sections 1531, et seq.). If a "take" will result from any act authorized under this WQC, the Applicant must obtain authorization for the take prior to construction or operation of the Project. The Applicant is responsible for meeting all applicable requirements of the Endangered Species Act for the Project authorized under this WQC.

Additional Conditions

Pursuant to CCR title 23, the following additional conditions are requirements of this WQC:

1. Within thirty (30) days from the date of issuance of this Order for WQC, the Applicant is required to upload Project information (all information fields required by EcoAtlas), including a Project map (either using upload or draw polygon features) to the following website: <http://ptrack.ecoatlas.org/>. Amendments to and monitoring reports associated with the Project must be updated on EcoAtlas (using the "Files and Links" tab under "Projects" in EcoAtlas) in addition to any other reporting required as part of this WQC.
2. All excess sediment excavated from the site that is not used on-site will be removed from the site and stockpiled in an upland location so as to not be transported by wind or water into surface water. An adequate combination of sediment and erosion control BMPs must be implemented and maintained, as needed, to temporarily stabilize stockpiled soils until such time that they are reused and/or permanently stabilized.
3. To document the completion of the Project, the Applicant must submit a Project Completion Report to the Water Board within 60 days following completion of the Project, including successful completion of all required mitigation and associated monitoring and reporting, if applicable. The Project Completion Report should include the following, at minimum: (1) a summary of the Project activities including: the date(s) those activities were performed, identification of work locations, techniques used (hand tools, mechanized equipment, etc.), and activities related to construction storm water controls and the BMPs used; (2) a description of the areas of temporary and permanent disturbance to waters of the state; and (3) a summary of any activities that deviated from those described in the original application and supporting documents.
4. The Applicant will comply with all requirements and Best Management Practices (BMP) of State Water Board's National Pollutant Discharge Elimination System General Permit for Stormwater Discharges Associated with Construction and Land Disturbance Activities (General Permit) Order No. 2022-0057-DWQ.

5. This WQC does not authorize emergency repair activities. The Applicant is required to apply for separate authorization to perform emergency repairs should that be necessary.
6. Construction equipment vehicles and equipment must be monitored for leaks, and proper BMPs must be implemented should leaks be detected, or the vehicles/equipment must be removed from service, if necessary, to protect water quality.
7. Debris, cement, concrete (or wash water therefrom), oil or other petroleum products (e.g. asphalt grindings) must not be allowed to enter or be placed where they may be washed from the Project site by rainfall or runoff into waters of the state. When operations are completed, any excess material must be removed from the Project work area and any areas adjacent to the work area where such material may be transported into waters of the state.
8. The Applicant must immediately notify Water Board staff by telephone whenever an adverse condition occurs as a result of this discharge. Such a condition includes, but is not limited to, a violation of the conditions of this WQC, a significant spill of petroleum products or toxic chemicals, or damage to control facilities that would cause noncompliance. A written notification of the adverse condition must be provided to the Water Board within two weeks of occurrence. The written notification must identify the adverse condition, describe the actions completed or necessary to remedy the condition, and specify a timetable, subject to any modifications by Water Board staff, for the remedial actions, if not already accomplished.
9. An "Annual Fee" will be assessed each year this WQC remains in "Active" status. The actual Annual Fee will be calculated using the fee schedule in effect at the time the annual fee is assessed per California Code of Regulations, title 23, section 2200(a)(3). The Annual Fee will apply each fiscal year or portion of fiscal year until the Applicant submits a Project Completion Report (see Additional Condition No. 3 above) and Water Board staff issues a Notice of Project Complete Letter to the Applicant.
10. An emergency spill kit must always be at the Project site during the Project.
11. The Applicant must permit Water Board staff or its authorized representative upon presentation of credentials:
 - a. Entry onto Project premises, including all areas on which wetland fill or wetland mitigation is located or in which records are kept.
 - b. Access to copy any record required to be kept under the terms and conditions of this WQC.
 - c. Inspection of any treatment equipment, monitoring equipment, or monitoring method required by this WQC.

- d. Sampling of any discharge or surface water covered by this WQC.
- 12. The Applicant must prevent the introduction or spread of noxious/invasive organisms within the Project and staging areas. The control measures may include the treatment of onsite infestations, the cleaning of all equipment and gear that has been in an infested site, the use of weed-free erosion control materials (including straw), and the use of weed-free seeds and plant material for revegetation of disturbed areas.
- 13. The Applicant must maintain at the Project site a copy of this WQC and a copy of the complete WQC application provided to the Water Board so as to be available at all times to site operating personnel and agencies.
- 14. The Applicant is responsible for informing any contractors of the specific conditions contained in this WQC.

Enforcement

In the event of any violation or threatened violation of the conditions of this WQC, the violation or threatened violation must be subject to any remedies, penalties, process or sanctions as provided for under state law. For purposes of CWA section 401(d), the applicability of any state law authorizing remedies, penalties, process or sanctions for the violation or threatened violation constitutes a limitation necessary to assure compliance with the water quality standards and other pertinent requirements incorporated into this WQC.

In response to a suspected violation of any condition of this WQC, the State Water Board or the Water Board may require the holder of any permit or license subject to this WQC to furnish, under penalty of perjury, any technical or monitoring report the State Water Board or Water Board deems appropriate, provided that the burden, including costs, of the reports must be a reasonable relationship to the need for the reports and the benefits to be obtained from the reports.

In response to any violation of the conditions of this WQC, the Water Board may add to or modify the conditions of this WQC as appropriate to ensure compliance.

Section 401 Water Quality Certification Requirements Granted

I hereby issue this WQC certifying that any discharge from the referenced Project will comply with the applicable provisions of CWA sections 301 (Effluent Limitations), 302 (Water Quality Related Effluent Limitations), 303 (Water Quality Standards and Implementation Plans), 306 (National Standards of Performance), and 307 (Toxic and Pretreatment Effluent Standards), and with other applicable requirements of state law. Notwithstanding any determinations by the U.S. Army Corps of Engineers or other federal agency made pursuant to 40 C.F.R. section 121.9, dischargers must comply with the entirety of this certification because this discharge is also regulated under State Water Board Order No. 2003-0017-DWQ, "General Waste Discharge Requirements for Dredge and Fill Discharges That Have Received State Water Quality Certification"

which requires compliance with all conditions of this WQC. A copy of State Water Board Order No. 2003-0017-DWQ is enclosed for your reference (Enclosure 2).

Except insofar as may be modified by any preceding conditions, all WQC actions are contingent on (a) the discharge being limited and all proposed mitigation being completed in strict compliance with the Applicant's Project description and the terms specified in this WQC, and (b) compliance with all applicable requirements of the Basin Plan.

We look forward to working with you in your efforts to protect water quality. If you have any questions regarding this matter, please contact Tiffany Steinert, Engineering Geologist, at (760) 241-7305 (Tiffany.Steinert@waterboards.ca.gov) or Christina Guerra, Senior Engineering Geologist, at (760) 241-7333 (christina.guerra@waterboards.ca.gov).

Electronic document submittal is required. Please send all future correspondence regarding this Project to the Water Board's email address at lahontan@waterboards.ca.gov and include your WDID No. and Project/Facility Name in the subject line.

BEN LETTON

ACTING EXECUTIVE OFFICER/ASSISTANT EXECUTIVE OFFICER

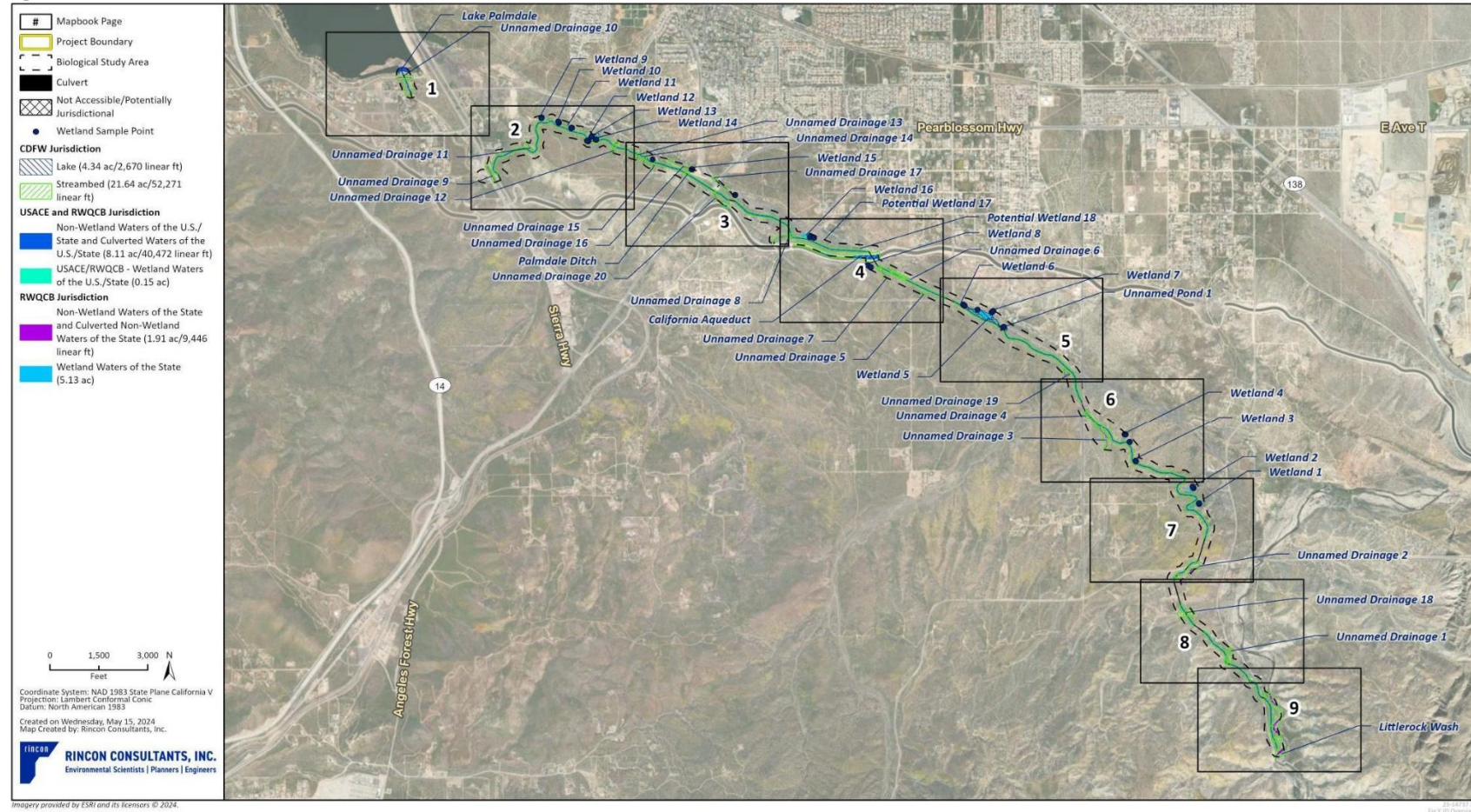
Enclosures: (1) Jurisdictional Overview Map
(2) SWRCB Order No. 2003-0017-DWQ

cc: Brenna Vredeveld, Rincon Consultants, Inc.,
(bvredeveld@rinconconsultants.com)
Melissa Scianni, United States Environmental Protection Agency
(scianni.melissa@epa.gov)
Leison Bernstein, USACE, (Leison.K.Bernstein@usace.army.mil)
SWRCB, Division of Water Quality
(Stateboard401.Stateboard401@waterboards.ca.gov)
CDFW Contact, California Department of Fish and Wildlife,
([CDFW Contact Email](#))

ENCLOSURE 1

Jurisdictional Overview Map

Figure 7a Jurisdictional Delineation of the BSA – Overview



ENCLOSURE 2

SWRCB Order No. 2003-0017-DWQ

FY 24/25 Water Quality Certification Dredge and Fill Application Fee Calculator (effective 10/31/24)

Scroll down to see instructions below and use this calculator to estimate Water Quality Certification application fees

This calculator is publicly available for informational purposes only and estimates fees in accordance with the fiscal year 2024-2025 water quality fee schedule. Applicants may use the calculator to generate estimates for project budgeting. The State Water Board does not guarantee the accuracy of estimates generated by the calculator. The final fee amount **will be determined by Water Boards staff** in accordance with California Code of Regulations, Title 23, section 2200(a)(3). The State Water Board reserves the right to modify the calculator at any time.

Click here for a link to the current regulations.

Important note: This calculator may not be applicable to federal dischargers.

Please contact the State Water Board's Wetlands Permitting and Planning Manager with any questions

Combination Project : Check box for a combination deep water dredging and fill project; which are subject to both Category A and B fees.

☐

Discharge Size

Rounded Discharge Size

Application Fee

Category A Project Fee or Amendment Fee

Annual Fee

Category A Fill & Excavation Discharges (Fee Code 84) Note: discharge size equals the sum of temporary and permanent impacts

Discharge Area Acres x \$37,544

4.31

Rounded to two decimal places

\$4,212

\$157,603

\$3,540

Category B* Dredging Discharges (Fee Code 86)

Estimated annual fee

Expected Annual Dredge Quantity Cubic Yards x \$0.921

0

Rounded to whole number

\$0

\$0

\$0

*Category B Projects are billed annually and based on the quantity of material dredged during the previous fiscal year

Flat Fee Categories - Check ONE applicable box

Category C (Fee Code 85)

Sand Mining, In-Stream Gravel Mining and Beach Nourishment Discharges

☐

\$0

-

\$0

Category D (Fee Code 85)

Ecological Restoration and Enhancement Projects

☐

\$0

-

\$0

Category E (Fee Code 87)

Low Impact Discharges

☐

\$0

-

\$0

Category F (Fee Code 85)

Emergency Projects authorized by a General Order

☐

\$0

-

\$0

Category G Amended Orders - Check applicable box, Step 5 below

(1) All Category (D) Ecological and Restoration and Enhancement Projects, regardless of amendment type.

☐

Fee Code

(2) Administrative amendments including, but not limited to, ownership changes, typographic edits, or time extensions that do not result in a temporal loss of resource function. Amendments in this category require no technical analysis or additional compensatory mitigation.

☐

Fee Code

(3) Amendment results in change(s) in impact character, location, or volume of the discharge; or a time extension that results in temporal loss of resource function, according to the following criteria:

☐

-Amendment increases the active certification's impact quantity by less than 50 percent, and

-Amendment does not require a change to the mitigated aquatic resource type.

Annual fee applicable per discharge category above.

Fee Code

(4) Amendment requires a supplemental CEQA analysis, or

Amendment results in change(s) in impact character, location, or volume of the discharge, or a time extension that results in a temporal loss of resource function, according to the following criteria:

☐

-Amendment increases the active certification's impact quantity by more than 50 percent, or

-Amendment requires a change to the mitigated aquatic resource type.

Fee Code

Category H (Fee Code 19) Note: Maximum fee not applicable to this category

(H) Wildfire Mitigation by Electrical Corporations, Electric Utilities, and Electrical Cooperatives

☐

\$0

Total Fees

Application Fee
Due with application

\$4,212

Category A Project Fee or Amendment Fee
Due prior to certification or amendment

\$157,603

Sum of Fees Due Prior to Authorization
Note to dischargers seeking an amendment to an existing order:
Sum does not include any previously paid fee amounts

\$161,815

Annual Fee
Invoiced annually
(unless maximum \$365,465 fee reached)

\$3,540

General instructions

Terms defining the measurement of a "discharge":

- Discharge of "**dredged material**" is measured by the volume of material removed in deep water dredging activities;
- Discharge of "**fill material**" is measured by the physical area of placement of fill material into a waterbody;
- Discharge of "**excavation material**" is measured by the physical area within a waterbody where earth-moving activities occur.

Generally, fees are determined by the size or volume of discharge to a water body. Fees for fill and/or excavation projects are based on discharge area in acres. Fees for deep water dredging are based on the volume of dredged material removed in cubic yards. For further explanation, see (A) and (B) below. However, your project may qualify for a flat fee category. If so, the project fee will be based on the fee for that category instead of size or volume (see (C) through (G) below). Amended orders may or may not be subject to fees depending on the complexity of analysis required. Follow the steps below to determine the fee associated with your project. Please contact Water Boards staff with further questions regarding how to use the calculator, **click here** for a link to the staff directory.

Step 1 Determine the Fee Category for your project:

Fee Based on Fill or Excavation Discharge Size Within the Waterbody

(A) Do your project activities add fill material (soil, rocks, concrete, culverts(s), pier pilings, etc.) or excavate soil or other materials within a waterbody?

Fill refers to replacing any portion of a water with dry land, or to changing the bottom elevation or grade of any portion of a water. Fill material includes rock, sand, clay, plastics, construction debris, wood chips, overburden from mining, or other construction activities, and materials used to create any structure or infrastructure within waters (culverts, pilings, etc.).

Excavation refers to removing sediment or soil in shallow waters or under no-flow conditions where impacts to beneficial uses are best described by the area of the excavation. It typically is done for purposes other than navigation. Examples include earth-moving work such as trenching for utility lines; channel reconstruction; embankment construction; removing sediment to increase channel capacity; and other flood control and drainage maintenance activities (e.g. debris removal, vegetation management and removal, detention basin maintenance and erosion control of slopes along open channels and other drainage facilities).

Fees Based on Discharge of Dredged Material

(B) Is your project deep water dredging? (except Sand Mining - see (C) below)

Dredging generally refers to removing sediment in deeper water to increase depth and typically occur to facilitate navigation. The impacts to beneficial uses are best described by the volume of the discharge removed. Dredge volumes are expressed in cubic yards.

Fee Based on Flat Fee Categories

Does your project qualify for one of the following flat fee categories? **To qualify for a flat fee category, the entirety of all project activities must be included within a single flat fee category**, i.e., the project cannot include other components involving activities not included within the flat fee category.

(C) Sand Mining, In-Stream Gravel Mining and Beach Nourishment Discharges

Aggregate extraction in surface waters where source material is free of pollutants and the dredging operation will not violate any basin plan provisions and beach nourishment projects.

(D) Ecological Restoration and Enhancement Projects

The project meets the definition of an "Ecological Restoration and Enhancement Project" set forth in the State Wetland Definition and Procedures for Discharges of Dredged or Fill Materials to Waters of the State, adopted by the State Water Board on April 2, 2019:

Ecological Restoration and Enhancement Project means the project is voluntarily undertaken for the purpose of assisting or controlling the recovery of an aquatic ecosystem that has been degraded, damaged or destroyed to restore some measure of its natural condition and to enhance the beneficial uses, including potential beneficial uses of water. Such projects are undertaken:

- 1) in accordance with the terms and conditions of a binding stream or wetland enhancement or restoration agreement, or a wetland establishment agreement, between the real property interest owner or the entity conducting the habitat restoration or enhancement work and:
 - a. a federal or state resource agency, including, but not limited to, the U.S. Fish and Wildlife Service, Natural Resources Conservation Service, Farm Service Agency, National Marine Fisheries Service, National Oceanic and Atmospheric Administration, U.S. Forest Service, U.S. Bureau of Land Management, California Department of Fish and Wildlife, California Wildlife Conservation Board, California Coastal Conservancy or the Delta Conservancy;
 - b. a local agency with the primary function of managing land or water for wetland habitat purposes; or
 - c. a non-governmental conservation organization; or
- 2) by a state or federal agency that is statutorily tasked with natural resource management. These projects do not include the conversion of a stream or natural wetland to uplands or stream channelization. It is recognized that Ecological Restoration and Enhancement Projects may require ongoing maintenance or management to maximize fish, wildlife, habitat, or other ecological benefits, or filling gullied stream channels and similar rehabilitative activities to re-establish stream and meadow hydrology. Changes in wetland plant communities that occur when wetland hydrology is more fully restored during rehabilitation activities are not considered a conversion to another aquatic habitat type. These projects also do not include actions required under a Water Board Order for mitigation, actions to service required mitigation, or actions undertaken for the primary purpose of land development.

(E) Low Impact Discharges

Projects may be classified as low impact discharges if they meet all of the following criteria:

1. The discharge size is less than all of the following: (a) for fill, **0.1 acre, AND 300 linear feet**, and (b) for dredging, 25 cubic yards.
2. The discharger demonstrates that: (a) all practicable measures will be taken to avoid impacts; (b) where unavoidable temporary impacts take place, waters and vegetation will be restored to pre-project conditions as quickly as practicable; and (c) where unavoidable permanent impacts take place, there will be no net loss of wetland, riparian area, or headwater functions, including onsite habitat, habitat connectivity, floodwater retention, and pollutant removal.
3. The discharge will not do any of the following: (a) directly or indirectly destabilize a bed of a receiving water; (b) contribute to significant cumulative effects; (c) cause pollution, contamination, or nuisance; (d) adversely affect candidate, threatened, or endangered species; (e) degrade water quality or beneficial uses; (f) be toxic; or (g) include "hazardous" or "designated" material.

(F) Emergency Projects Authorized by a Water Board General Order

RGP 8 Corps' Sacramento District

RGP 5 Corps' San Francisco District

RGP 63 Corps' Los Angeles District

(G) Amended Orders (go to Step 4)

(H) Wildfire Mitigation by Electrical Corporations, Electric Utilities, and Electrical Cooperatives

Dredge or fill activities conducted by electrical corporations, electric utilities, and electrical cooperatives pursuant to a wildfire mitigation plan prepared in accordance with Public Utilities Code, section 8386(b) or section 8387(b)(1). This annual fee covers all dredge or fill activities conducted by the electrical corporations, electric utilities, and electrical cooperatives pursuant to a wildfire mitigation plan, and is in lieu of the project-specific dredge or fill fees in section 2200(a)(3)(A)-(G) for dredge or fill activities conducted pursuant to a wildfire mitigation plan. Annual fee is assessed as \$40.00 per mile of overhead electrical lines

Step 2

If you have determined that your project qualifies for a flat fee category (C through H) check the applicable box to calculate fees.

Step 3

A. Is your project a fill/excavation project?

If your project is a fill/excavation project, calculate your fee based on the size of the discharge area in acres. For projects with multiple impact sites, sum the individual discharge quantities and enter the total in the calculator. For projects impacting multiple water features sum discharge quantities for all features. In addition, fees are based on the sum of both permanent and temporary impacts. The size of the discharge area shall be rounded to two decimal places (0.01 acre = 436 square feet). Category A discharges are subject to the sum of the Application fee and Project fee; the Application fee is due at the time of application and the project fee is due prior to issuance of the certification; additional annual fees are assessed from the date of certification until project completion.

B. Is your project a dredging project? Your dredging fee will be based on the actual amount of material dredged from the waterbody. Therefore, annual active discharge invoices are sent for the previous fiscal year's dredging amount. Invoice amounts will be based on the fee schedule current for that fiscal year. Please submit your application fee amount as shown in the calculator above. You may estimate your upcoming annual active discharge fee using the current fee calculator. However, this will only be an estimate because fees are subject to change annually as approved by the State Water Board.

Combination fill/excavation and dredging Projects (A and B)

Does your dredging project also include a discharge of fill material? These projects typically include dredging material from one part of a waterbody and depositing the dredged material into a different location in the waterbody. These projects are subject to both Category A and Category B fees.

Step 4

Are you requesting an amendment to a previously issued water quality certification or WDR? Fees for amended orders are based on the increased quantity of discharge and the level of technical analysis required evaluate project changes, therefore Water Board staff will determine which category your amendment is subject. Water Board staff will determine the fee for amendments based on the fee schedule and will request the applicant to submit the appropriate fee.

Fees based on amendments are categorized as follows:

(1) All Category (D) Ecological and Restoration and Enhancement Projects, regardless of amendment type. **No fee required**

(2) Administrative amendments including, but not limited to, ownership changes, typographic edits, or time extensions that do not result in a temporal loss of resource function. Amendments in this category require no technical analysis or additional compensatory mitigation. **No fee required**

(3) Amendment results in change(s) in impact character, location, or volume of the discharge; or a time extension that results in temporal loss of resource function, according to the following criteria:

-Amendment increases the active certification's impact quantity by **less than 50 percent**, and
-Amendment does not require a change to the mitigated aquatic resource type.

Additional standard fee assessed per increased amount of discharge(s). The minimum fee is \$4,212. For category A or B projects, enter discharge quantities for increased impacts quantities. For flat fee categories, select the appropriate category.

(4) Amendment requires a supplemental CEQA analysis, or Amendment results in change(s) in impact character, location, or volume of the discharge, or a time extension that results in a temporal loss of resource function, according to the following criteria:

-Amendment increases the active certification's impact quantity by **more than 50 percent**, or
-Amendment requires a change to the mitigated aquatic resource type.

Additional standard fee assessed per total amount of discharge(s). The minimum fee is \$4,212. For category A or B projects, enter discharge quantities for all project impacts, including quantities previously certified. For flat fee categories, select the appropriate category.

Dischargers that have met the project fee cap will be assessed the minimum fee for each amendment of previously-issued WDR or water quality certification.

Step 5

See **Total Fees** for a breakdown of fees owed.

Step 6

Fee Types & Due Dates

Projects are subject to fees at three separate times throughout the life of a project. Application and Project Fees are determined according to the fee schedule in effect on the date of application submittal. Annual fees are determined according to the fee schedule in effect on the date of billing:

1) Application Fee: Amount due with the initial application.

2) Project Fee: Amount due prior to certification (applies to Category A only).

3) The Annual Fee amount is invoiced annually: All projects are subject to an Annual Fee each fiscal year or portion of a fiscal year that the certification is active (from the effective date of the order until the regional board or state board issues a Notice of Project Complete Letter to the discharger). The Water Boards fiscal year begins on July 1 and ends on June 30. Dischargers will be invoiced their first Annual Fee beginning in November/December of the year following the Effective Date of certification. Dischargers will be invoiced for an Annual Fee each year until the project is completed. The annual fee for category (A) fill and excavation discharges will be \$3,540 for the first five fiscal years following the effective date of the order, then \$563 beginning with the sixth fiscal year until the Notice of Completion is issued to the discharger. The annual fee for category (B) dredging discharges will be invoiced after the annual dredge volume has been determined.



BOARD MEMORANDUM

DATE: June 9, 2025
TO: **BOARD OF DIRECTORS**
FROM: Mr. Shadi Bader, Engineering Manager
VIA: Mr. Scott Rogers, Assistant General Manager
VIA: Mr. Dennis D. LaMoreaux, General Manager
RE: ***CONSIDERATION AND POSSIBLE ACTION ON APPROVAL OF WESTERN JOSHUA TREE INCIDENTAL TAKE PERMIT FEE FROM THE CALIFORNIA DEPARTMENT OF FISH AND WILDLIFE. (\$558,000.00 – BUDGETED – PROJECT NO. 21-613 – ENGINEERING MANAGER BADER)***

Recommendation:

Staff recommends that the Board authorize the General Manager to approve a payment for up to \$558,000.00 for the Western Joshua Tree Incidental Take Permit Fee from the California Department of Fish and Wildlife.

Alternative Options:

The alternative would be to not proceed with the payment of the Western Joshua Tree Incidental Take Permit Fee from the California Department of Fish and Wildlife.

Impact of Taking No Action:

The potential impact of taking no action could result in delays in the issuance of the Western Joshua Tree Incidental Take Permit for the Palmdale Ditch Conversion Project, which in turn would delay the start of construction of the Project.

Background:

The Palmdale Ditch Conversion Project will convert approximately 7.2 miles of an open channel into a closed pipeline system, enhancing water delivery efficiency and reliability for the region. However, the project area contains habitat for the Western Joshua Tree (WJT), which is protected under the Western Joshua Tree Conservation Act (WJTCA) enacted by the State of California.

As part of the environmental permitting process, and in accordance with the California Department of Fish and Wildlife's (CDFW) requirements, mitigation fees must be paid for each WJT impacted by the project. These impacts include both direct removal of trees within the construction footprint and indirect encroachment on trees within 50 feet of project disturbance areas.

June 9, 2025

The fee schedule for mitigation is based on tree size and is published annually by the CDFW. Because the project area is outside the designated reduced fee zones, the full mitigation rates apply and will be enforced by CDFW.

The biological surveys identified a total of 1,030 Western Joshua Trees within the survey area. Of these, 317 trees will be removed during construction, and an additional 713 are considered encroached. Based on size class distribution and CDFW fee rates, the calculated mitigation fee is \$506,675.75, with an added 10% contingency (\$50,667.58). Staff recommends rounding the payment approval to the nearest thousand, resulting in a total payment not to exceed \$558,000.00 to CDFW.

This mitigation payment is required to secure an Incidental Take Permit (ITP) under the WJTCA, allowing construction to proceed.

Strategic Plan Initiative/Mission Statement:

This item is under Strategic Initiative No. 1 – Water Resource Reliability and No. 3 – Systems Efficiency. This item directly relates to the District’s Mission Statement.

Budget:

This item is budgeted under Project No. 21-613.

Supporting Documents:

- Board Presentation
- California Department of Fish and Wildlife Western Joshua Tree Conservation Act Incidental Take Permit Fee Schedule
- California Department of Fish and Wildlife Mitigation Fee Calculator – May 2025



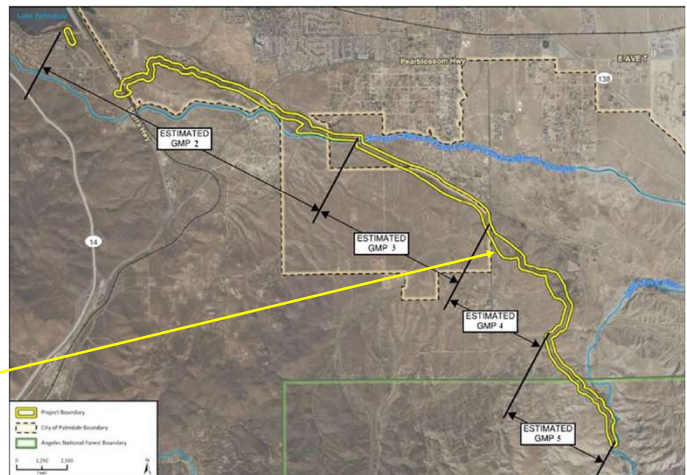
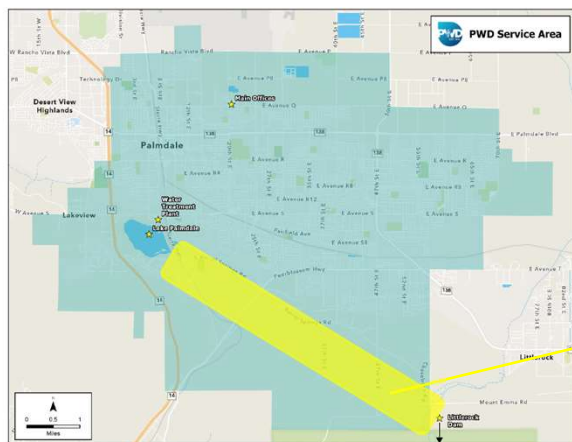
AUTHORIZATION TO SUBMIT MITIGATION FEE PAYMENT TO CDFW – WESTERN JOSHUA TREE MITIGATION FOR THE PALMDALE DITCH CONVERSION PROJECT

Board of Directors Meeting
June 9, 2025



1

Location Map



2

Background and Requirements

- Project impacts protected Western Joshua Trees (WJT)
- Compliance required under WJTCA-ITP
- CDFW mitigation fees based on tree size and number impacted



3

Fee Breakdown

Size Class	Fee/Tree	# of Trees	Subtotal
A (<1m)	\$346	620	\$214,520
B (1-5m)	\$509	369	\$187,821
C (>1m)	\$2,544.75	41	\$104,334.75

Subtotal: \$506,675.75

Contingency (10%): \$50,667.58

Subtotal: \$557,343.33

Rounded up Total: **\$558,000.00**

- ✓ This item serves Strategic Initiative No. 1 – Water Resource Reliability and No. 3 – Systems Efficiency. This item directly relates to the District's Mission Statement.



4

Fee Breakdown

Size Class	Fee/Tree	# of Trees	Subtotal
A (<1m)	\$346	620	\$214,520
B (1-5m)	\$509	369	\$187,821
C (>1m)	\$2,544.75	41	\$104,334.75

- Subtotal: \$506,675.75
- Contingency (10%): \$50,667.58
- Subtotal: \$557,343.33
- Rounded up Total: **\$558,000.00**



5

Recommendation

- Staff recommends that the Board of Directors authorize the General Manager to approve a payment of up to \$558,000 for the Western Joshua Tree Incidental Take Permit Fee from the California Department of Fish and Wildlife..



6



Western Joshua Tree Conservation

WJT Conservation Act

WJT Conservation Plan

Permits and Agreements

Frequently Asked Questions

Western Joshua Tree Conservation Act Incidental Take Permit

On this page

- [Calculating Mitigation Fees](#)
- [Applying for a WJTCA Incidental Take Permit](#)
- [Submit Application Package](#)

Calculating Mitigation Fees

Mitigation fees are paid to CDFW prior to permit issuance in lieu of traditional permittee mitigation. The fee is based on the number of individual western Joshua trees taken, dead or living, and their size class as defined in Fish and Game Code section 1927.3 (d) and (e). For purposes of fee calculation, a western Joshua tree individual is defined as a stem or trunk arising from the ground, regardless of proximity to any other western Joshua tree stem or trunk.

For western Joshua trees located within the reduced fee area defined in subsection (d) (see [interactive map of the area](#)) the fees are as follows:

Tree Size Class	Mitigation Fee
5 m or greater	\$1,017.75
Greater than 1 m but less than 5 m	\$203.50
Under 1 m	\$152.75

For trees located in the standard fee area defined in subsection (e) the mitigation fees are as follows:

Tree Size Class	Mitigation Fee
5 m or greater	\$2,544.75
Greater than 1 m but less than 5 m	\$509.00
Under 1 m	\$346.00

For example, a project will remove two western Joshua tree clusters both of which occur in the standard fee area. Cluster one is composed of one 5.5 m tree and 3 stems under 1 m in height. The second cluster is composed of two trees, 3.7 and 2.2 m in height. The total fee for mitigating the impact of removing these trees would be $2544.75 + (346 \times 3) + (509 \times 2) = 4600.75$.

Applying for a WJTCA Incidental Take Permit

Review the process guide

The [Application and Review Process Guide](#) describes the process for WJTCA incidental take permits and contains submission instructions.

Perform WJT Census

The census needs to include information about and photographs of each western Joshua tree. [Census instructions](#) are available to help you provide information to CDFW that will help expedite review.

Review Relocation Guidelines and Protocols

- [Western Joshua Tree Relocation Guidelines and Protocols, updated April 2025 \(PDF\)](#)

This document provides guidance on how and when to relocate western Joshua trees in order to minimize impacts to populations, prevent habitat fragmentation, and preserve connectivity corridors for gene flow and pollinator migration.

The guidelines section of the document discusses the circumstances in which CDFW would consider including permit conditions requiring relocation of one or more western Joshua trees under the WJTCA. The protocol section provides a summary of best practices for relocating western Joshua trees and increasing the survival rate of relocated (salvage) western Joshua trees. Information on post-relocation maintenance, monitoring, and reporting is also provided. This document will be updated as needed based on the best scientific information available additional resources:

- [WJTCA ITP Relocation Plan Template \(Word\)](#)
- [WJT Relocation Spreadsheet \(Excel\)](#)
- [WJT Salvage Requirement Calculator Spreadsheet \(Excel\)](#)

Fill out Application Form

- [Application Form \(Word\)](#)

Assemble Application Package

Collect or create any supplemental documents CDFW might need to assess the project. Include documents such as:

- Completed and signed application form
- Detailed project description
- Project diagrams, drawings, design plans, construction specifications, and maps
- CEQA documents, if available
- WJT Census (data, photographs, and map)
- WJT relocation maps and figures, if applicable

Providing a complete package helps CDFW expedite the review process.

Submit Application Package

You may submit your application and materials through email (preferred) or via postal service. For application packages too large to email, please contact the regional office for assistance or [submit via EPIMS](#) opportunity “Document Repository - HREA, CESA CDs, SERP and WJTCA ITPs”.

Please **DO NOT** submit a check with your application. CDFW will provide an invoice for payment of mitigation fees prior to WJTCA ITP issuance.

- **Region 4: Fresno, Kern, Kings, Madera, Mariposa, Merced, Monterey, San Benito, San Luis Obispo, Stanislaus, Tulare and Tuolumne counties**
1234 E. Shaw Avenue Fresno, CA 93710
reg4assistant@wildlife.ca.gov
(559) 243-4005 ext. 151
- **Region 5: Los Angeles, Orange, San Diego, Santa Barbara and Ventura counties**
3883 Ruffin Road, San Diego, CA 92123
r5cesa@wildlife.ca.gov
(858) 467-4201
- **Region 6: Imperial, Inyo, Mono, Riverside and San Bernardino counties**
3602 Inland Empire Blvd, Suite C-220, Ontario, CA 91764
AskRegion6@wildlife.ca.gov
(909) 484-0167

Western Joshua trees are unlikely to occur outside of the above regions. If you need a permit for a tree located in Regions 1, 2 or 3, [contact the regional office](#) for more information.

Western Joshua Tree (WJT) Mitigation Fees for Palmdale Ditch Conversion Project

Size Class	# WJT in Survey Area (Project Footprint + 50ft Buffer)	# WJT Removed (total w/in Project Footprint)	# WJT Encroached (total w/in Survey Area, but outside Project Footprint)	#WJT in Survey Area minus Size Class A > 25 ft from Project Footprint	Mitigation Fee per WJT*	Total Mitigation Fee
						Removed + Encroached
A (<1m)	620	223	397	448	\$346.00	\$ 214,520.00
B (>1m, <5m)	369	84	285	369	\$509.00	\$ 187,821.00
C (>5m)	41	10	31	41	\$2,544.75	\$ 104,334.75
Total	1030	317	713	858		\$ 506,675.75
10% Contingency					10%	\$ 557,343.33
Round Up to nearest \$1,000						\$ 558,000.00

*Mitigation Fee per WJT is based on CDFW fee schedule available here (trees are located outside of "reduced fee area") - <https://wildlife.ca.gov/Conservation/Environmental-Review/WJT/Permitting/WJTCA-ITP>



BOARD MEMORANDUM

DATE: June 9, 2025
TO: BOARD OF DIRECTORS
FROM: Dennis D. LaMoreaux, General Manager
RE: *CONSIDERATION AND POSSIBLE ACTION TO RESCHEDULE OR CANCEL THE AUGUST 25, 2025 REGULAR BOARD MEETING. (NO BUDGET IMPACT – GENERAL MANAGER LaMOREAUX)*

Recommendation:

Staff recommends that the August 25, 2025 Regular Board Meeting be cancelled due to a lack of a Board quorum if three Directors plan to attend the 2025 CSDA Annual Conference.

Alternative Options:

The August 25, 2025 Regular Board Meeting could be rescheduled to another time in August.

Impact of Taking No Action:

A quorum may not be available to hold a Board Meeting.

Background:

Board Directors have shown interest in attending the 2025 CSDA Annual Conference in Monterey. The first day of this Conference falls on the same day as the first Regular Board Meeting in August. Under Brown Act provisions, a quorum of the legislative body must participate in person from a physical location open to the public within the boundaries of jurisdiction.

Strategic Plan Initiative/Mission Statement:

This item is under Strategic Initiative No. 5 – Regional Leadership.

Budget:

Cancelling or rescheduling the second Regular Board Meeting in August will not affect the budget.

Supporting Documents:

- There are no supporting documents.