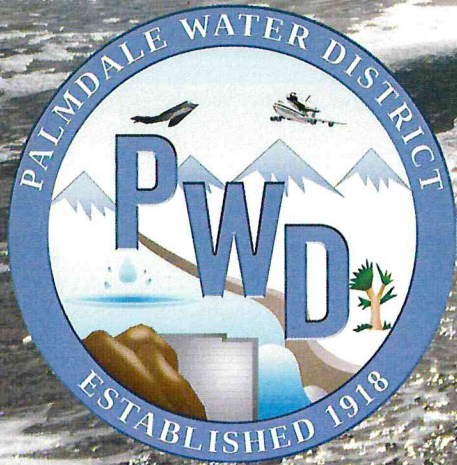


Town hall h2o forum October 4, 2016

"keep our water flowing"



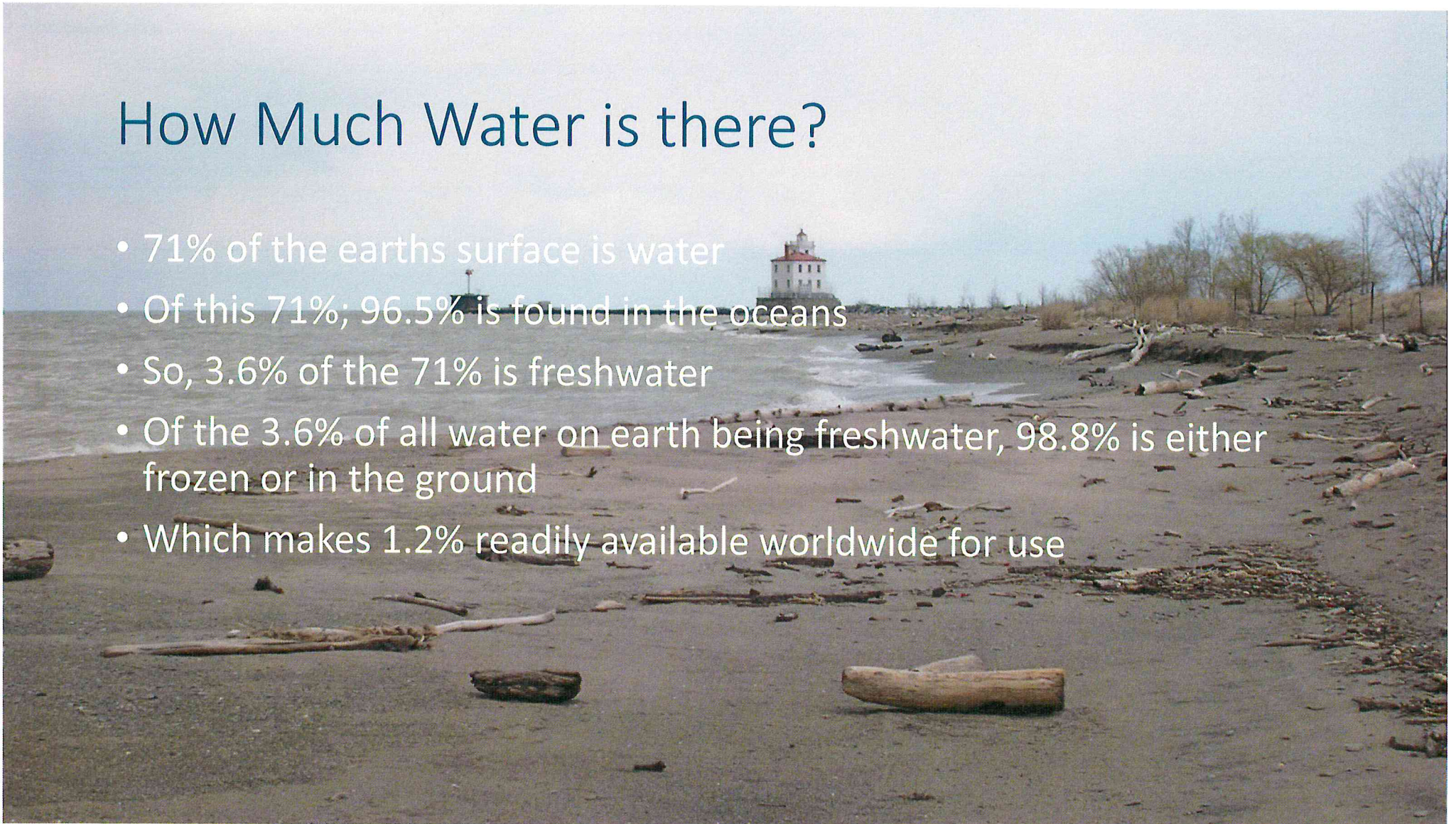
"When the well's dry, we know the worth of water."

--Benjamin Franklin



How Much Water is there?

- 71% of the earth's surface is water
- Of this 71%; 96.5% is found in the oceans
- So, 3.6% of the 71% is freshwater
- Of the 3.6% of all water on earth being freshwater, 98.8% is either frozen or in the ground
- Which makes 1.2% readily available worldwide for use



What we do to our water...

- What are the two types of water pollution?
 1. Point source
 2. Non-point source
- Examples of water pollution
 - Hydrocarbons
 - Chemicals
 - Fertilizers
 - Pharmaceuticals
 - Bacteria
 - Heavy metals
 - Plastic (trash) – Pacific Gyre
 - Waste (medical, nuclear, fracking, etc...)
- What is the number 1 water pollutant worldwide?
 - Answer: sediment (dirt)





Where does our water come from?

1. State Water Project (Aqueduct) 50%
2. Groundwater 38%
3. Littlerock Dam and Reservoir 12%

However.... Recently our sources have flipped (2015)

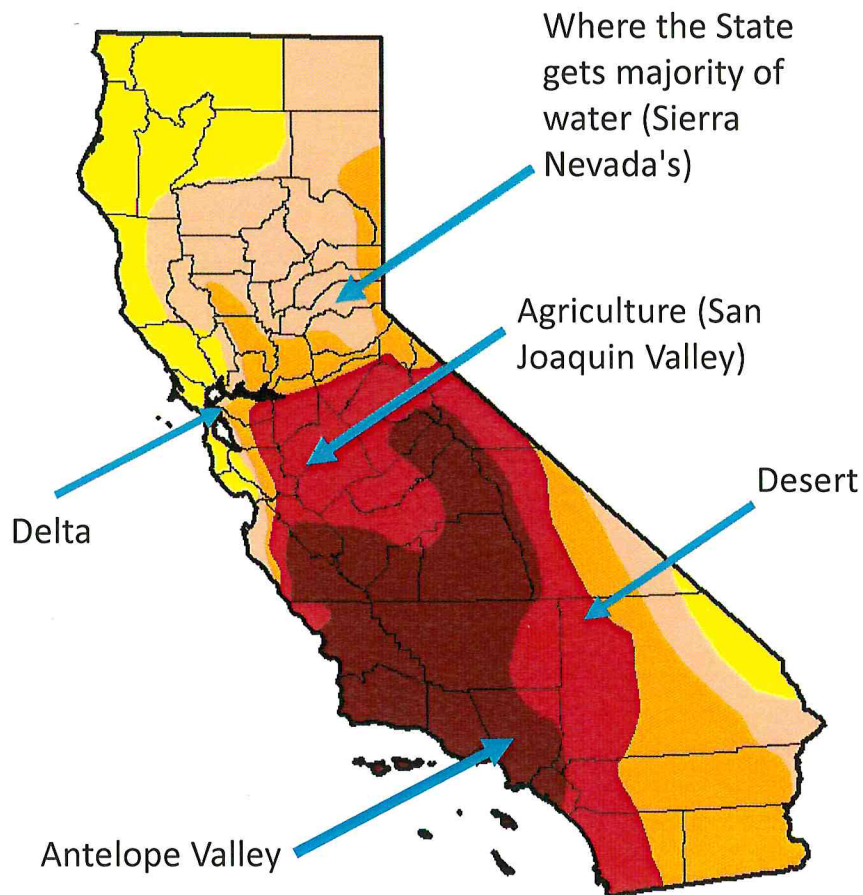
1. Groundwater 60%
2. State Water Project 40%
3. Littlerock dam and reservoir 0%



WHERE ARE WE NOW?

- 6th largest economy in the world
- Provides over half of U.S. fruits, nuts, and vegetables
- Has produced more agriculture than any other state for the last 50 years
- Population Affected by Drought: 33,774,411

U.S. Drought Monitor California



September 27, 2016
(Released Thursday, Sep. 29, 2016)
Valid 8 a.m. EDT

Drought Conditions (Percent Area)

	None	D0-D4	D1-D4	D2-D4	D3-D4	D4
Current	0.00	100.00	83.59	62.27	42.80	21.04
Last Week 9/20/2016	0.00	100.00	83.59	62.27	42.80	21.04
3 Months Ago 6/28/2016	0.00	100.00	83.59	59.02	42.80	21.04
Start of Calendar Year 1/22/2015	0.00	100.00	97.33	87.55	69.07	44.84
Start of Water Year 9/29/2015	0.14	99.86	97.33	92.36	71.08	46.00
One Year Ago 9/29/2015	0.14	99.86	97.33	92.36	71.08	46.00

Intensity:



The Drought Monitor focuses on broad-scale conditions. Local conditions may vary. See accompanying text summary for forecast statements.

Author:
Chris Fenimore
NCEI/NESDIS/NOAA

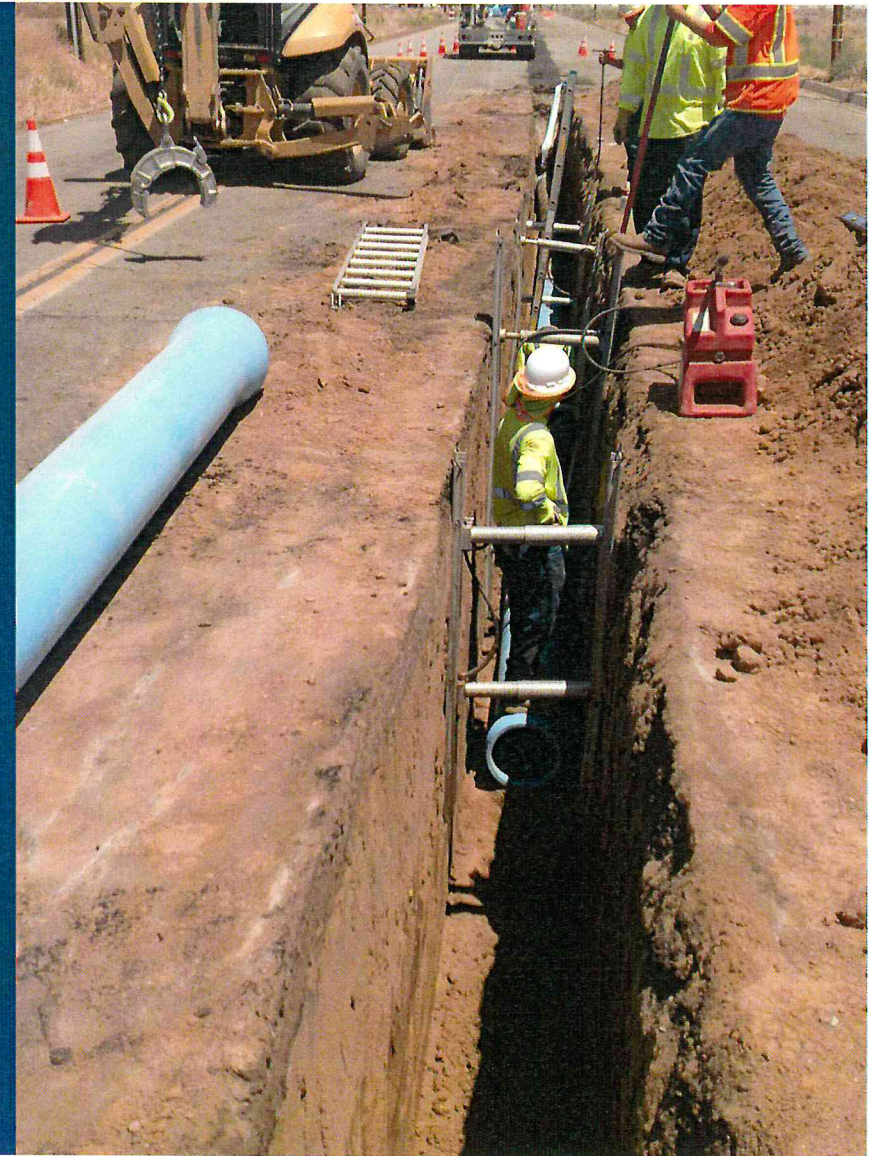


<http://droughtmonitor.unl.edu/>

Our Mission & Basic Function

“To Provide High Quality Water at a Reasonable Cost”

- Efficiency (Energy, Design, Reinvestment)
- Skilled and Certified Labor Force
- Diversification of Water Portfolio
- Professional Customer Care and Advocacy
- Financial Responsibility
- Grants and Low-Interest Loans
- Outreach and Engagement
- Community



Our Past Visionary Successes as a District



Littlerock Dam



State Water Contractor



Water Treatment Plant



Strengthened Littlerock Dam



Upgraded Water Treatment Plant



Inter-Connections with Agencies

All of these long-term visionary projects have allowed the District to be a regional/industry leader, respond well to changing water quality regulations and water supply challenges, and become the agency that others call upon in the time of need.

Our Current Visionary Goals as a District



Meet Our Community's Growing Population and Future Water Demand Needs



Diversify Our Water Supply Portfolio



Maximize SWP and Littlerock Water Supplies



Maintain and Replace Aging Infrastructure



Utilize Local Recycled Water Resource



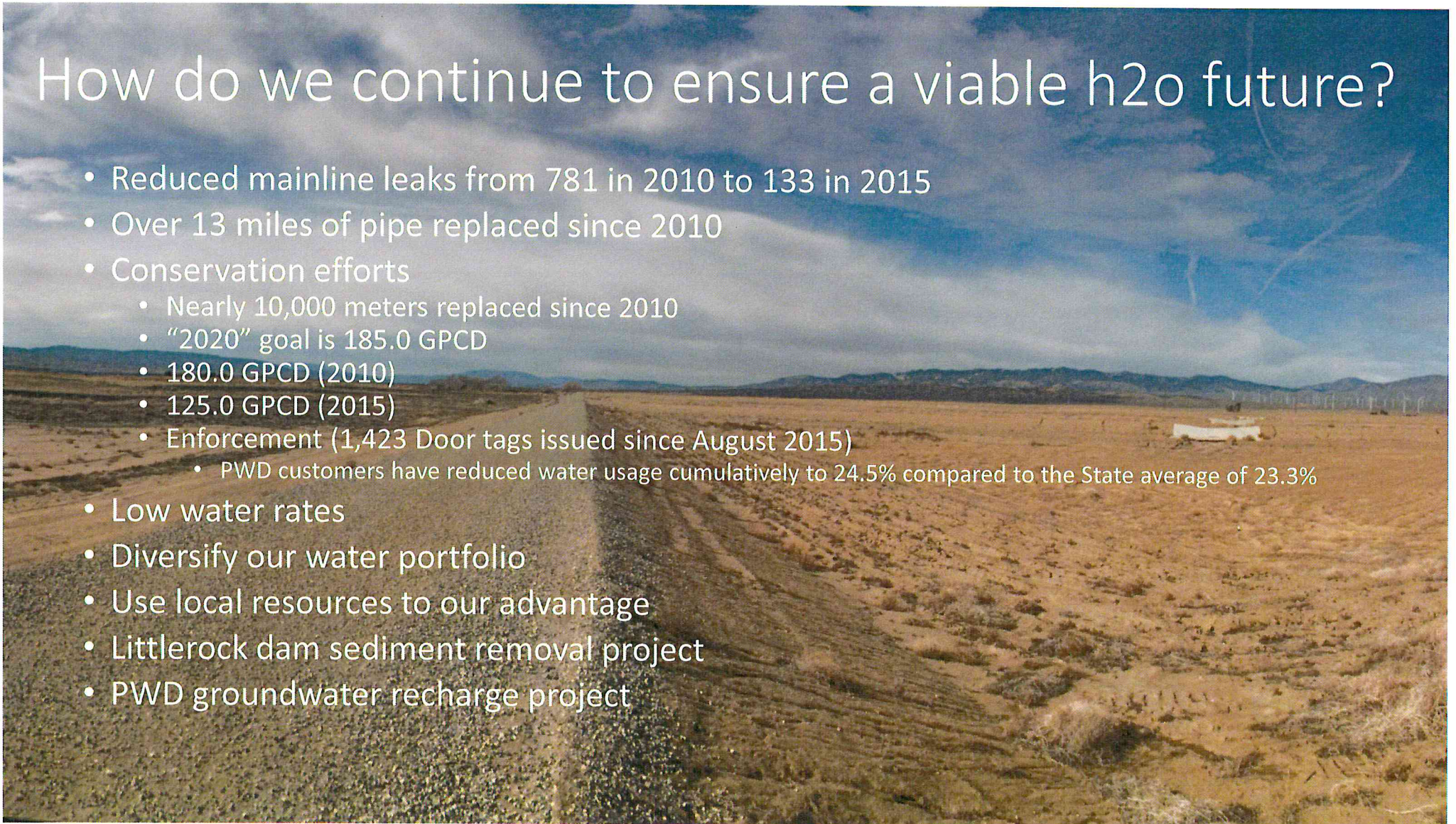
Meet Changing Water Quality Regulations



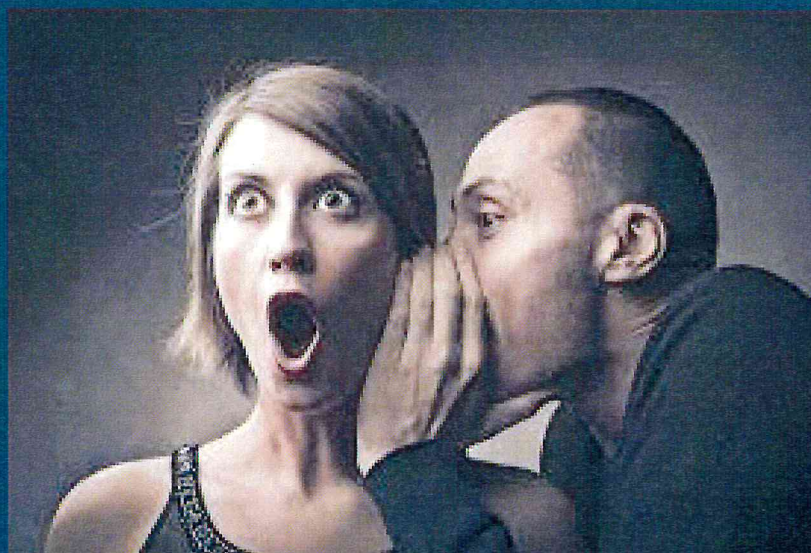
Prepare for Natural Disasters

How do we continue to ensure a viable h2o future?

- Reduced mainline leaks from 781 in 2010 to 133 in 2015
- Over 13 miles of pipe replaced since 2010
- Conservation efforts
 - Nearly 10,000 meters replaced since 2010
 - “2020” goal is 185.0 GPCD
 - 180.0 GPCD (2010)
 - 125.0 GPCD (2015)
 - Enforcement (1,423 Door tags issued since August 2015)
 - PWD customers have reduced water usage cumulatively to 24.5% compared to the State average of 23.3%
- Low water rates
- Diversify our water portfolio
- Use local resources to our advantage
- Littlerock dam sediment removal project
- PWD groundwater recharge project

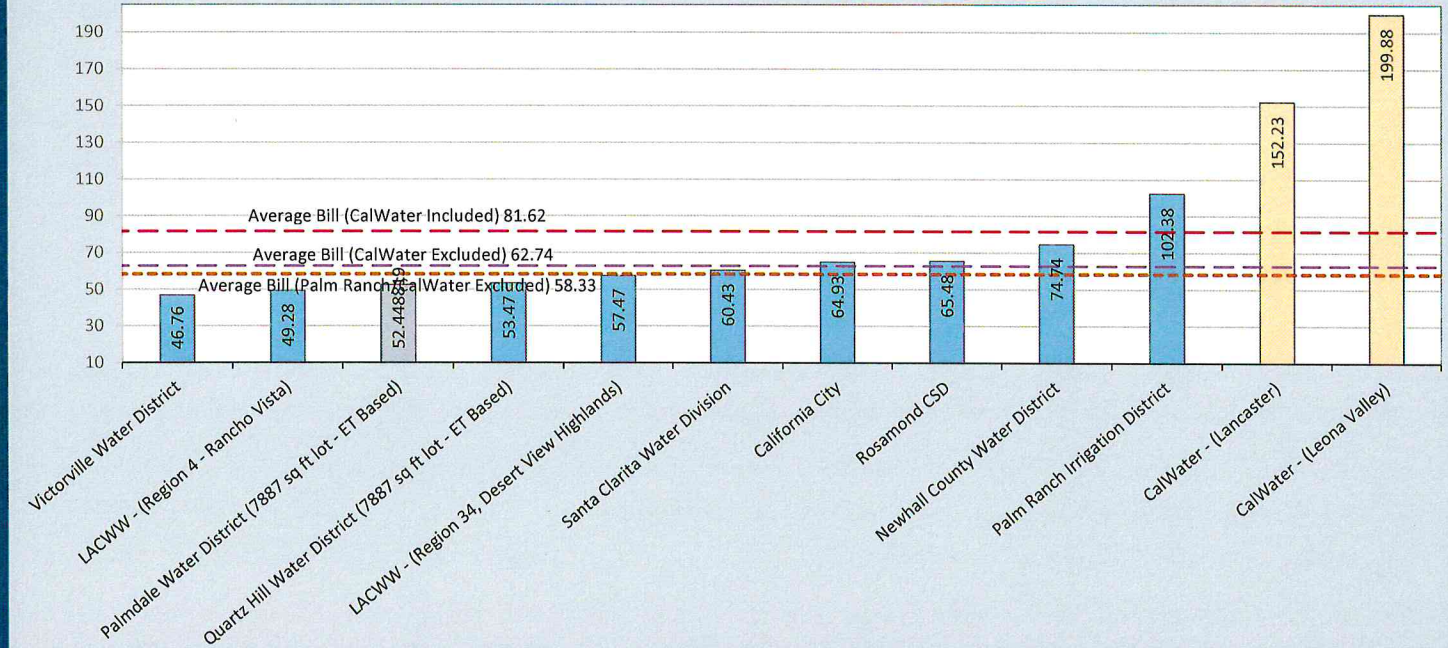


Hey, have you heard?



How does the PWD TRULY stack up with water rates?

Palmdale Water District
 Survey of Monthly Residential Water Rates (Effective July 1, 2016)
 (3/4" Meter, 20 ccf monthly usage)
 August 22, 2016



Sizing up Water Rate Restructuring...

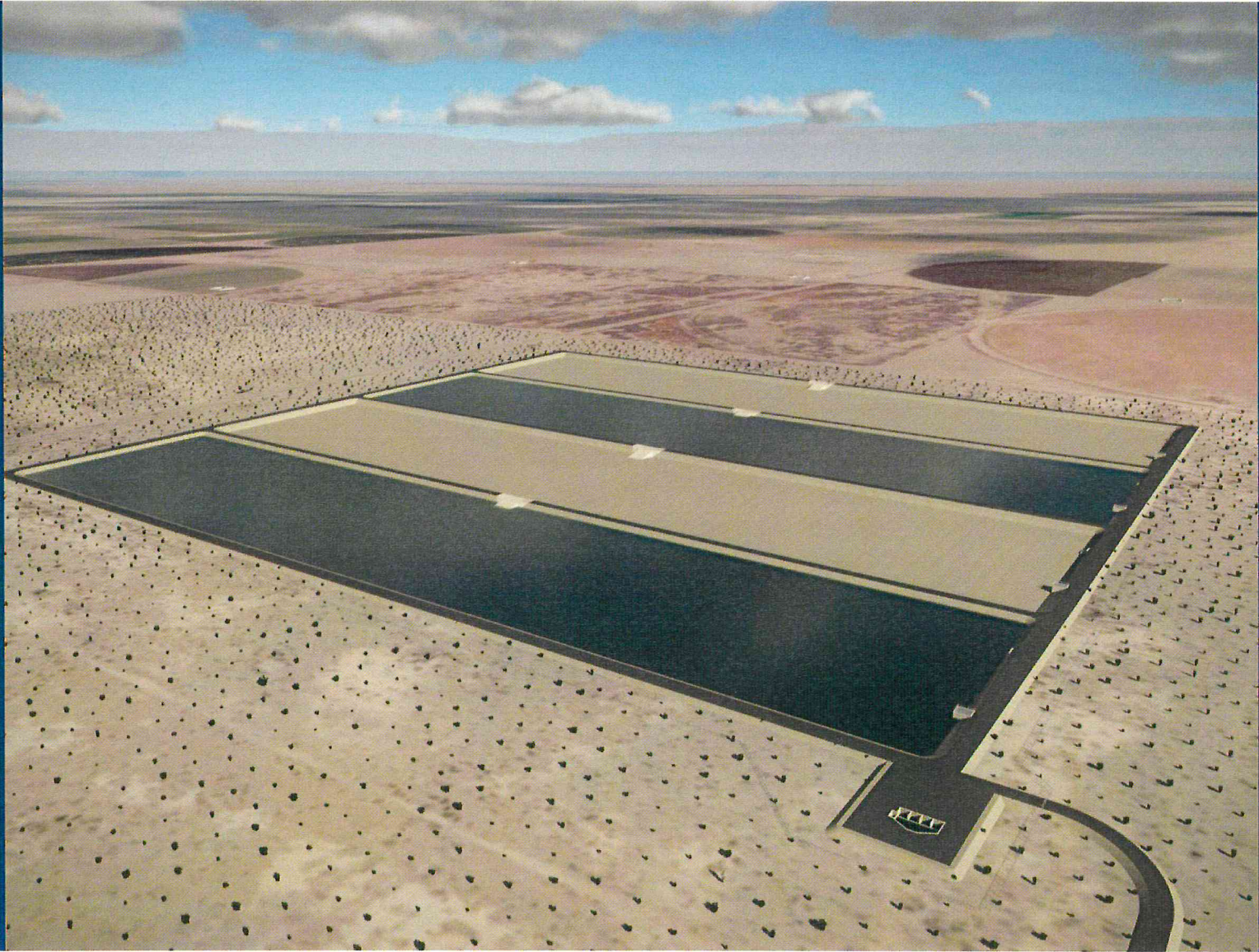
Agency Name	Rate Adjustment	Effective Date	Prop 218 Completed	Year in Plan
Victorville Water District	6.25%	July 1, 2016	2016	1 of 5
LACWW - (Region 4 - Rancho Vista)	4.80%	January 1, 2016	2015	Annual
Palmdale Water District	4%	January 1, 2016	2014	2 of 5
Quartz Hill Water District	5.75%	July 1, 2016	2016	1 of 5
LACWW - (Reg 34, Desert View Highlands)	4.80%	January 1, 2016	2015	Annual
Santa Clarita Water Division	3.50%	January 1, 2016	2014	3 of 5
California City	17%	July 1, 2016	2014	3 of 5
Rosamond CSD			New RFP	
Newhall County Water District	1.50%	July 1, 2016	2015	1 of 5
Palm Ranch Irrigation District (New Rates)	176% Fixed	July 1, 2016		

PWD Projects that Meet Ours and the City of Palmdale's Visionary Goals

Palmdale Regional Groundwater Recharge and Recovery Project	Littlerock Reservoir Sediment Removal Project
<ul style="list-style-type: none"> Meets our community's growing population and water supply needs for the vision and growth with the City of Palmdale 	<ul style="list-style-type: none"> Maximizes Littlerock Reservoir supply
<ul style="list-style-type: none"> Utilizes local recycled water resource 	<ul style="list-style-type: none"> Maintains critical infrastructure
<ul style="list-style-type: none"> Diversifies our water supply portfolio 	<ul style="list-style-type: none"> Diversifies our water supply portfolio
<ul style="list-style-type: none"> Maximizes our State Water Project supply 	<ul style="list-style-type: none"> Maintains recreational opportunity for the Antelope Valley
<ul style="list-style-type: none"> Prepares our community for natural disasters 	
<ul style="list-style-type: none"> Reduces our impact from groundwater adjudication and droughts 	
<ul style="list-style-type: none"> Most cost effective long-term water supply strategy for the District 	









Questions?

- This is an open format to ask questions about PWD business
- You can either ask questions using the microphone or fill out a card to be read and then answered
- PLEASE no interruptions while a person is speaking
- This is NOT a political format or debate
- Please be respectful and diplomatic to each other