

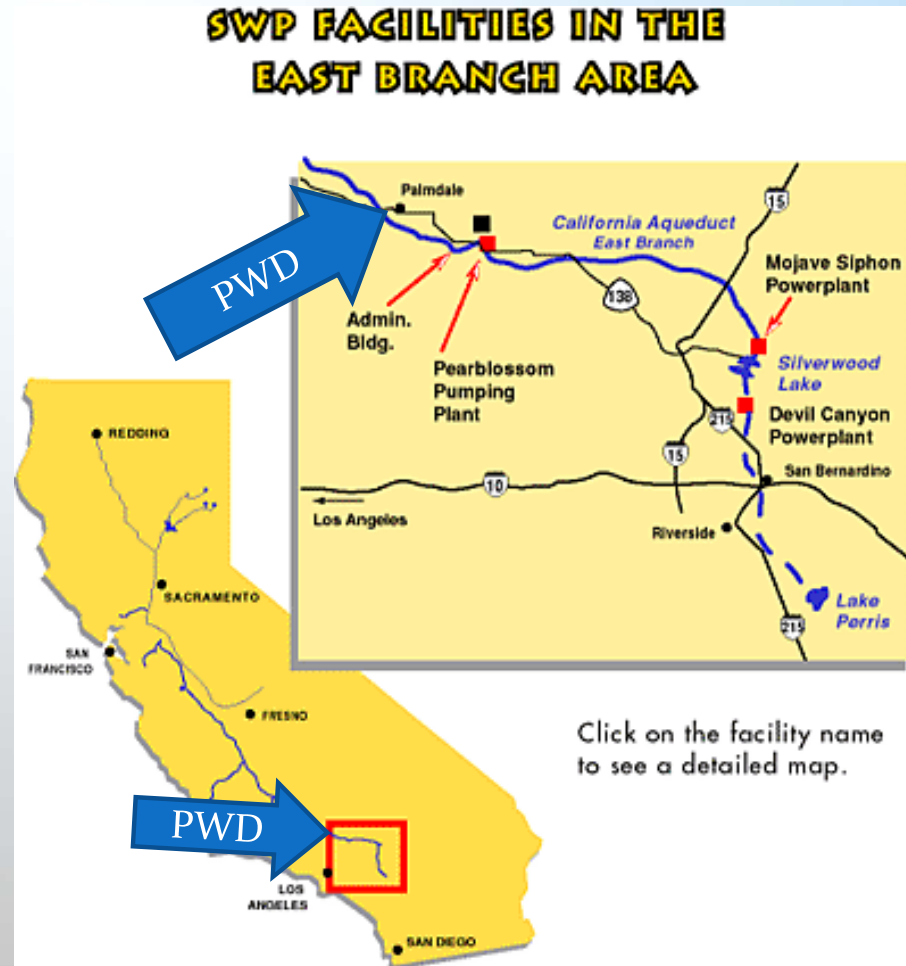
Yesterday

Today

Tomorrow

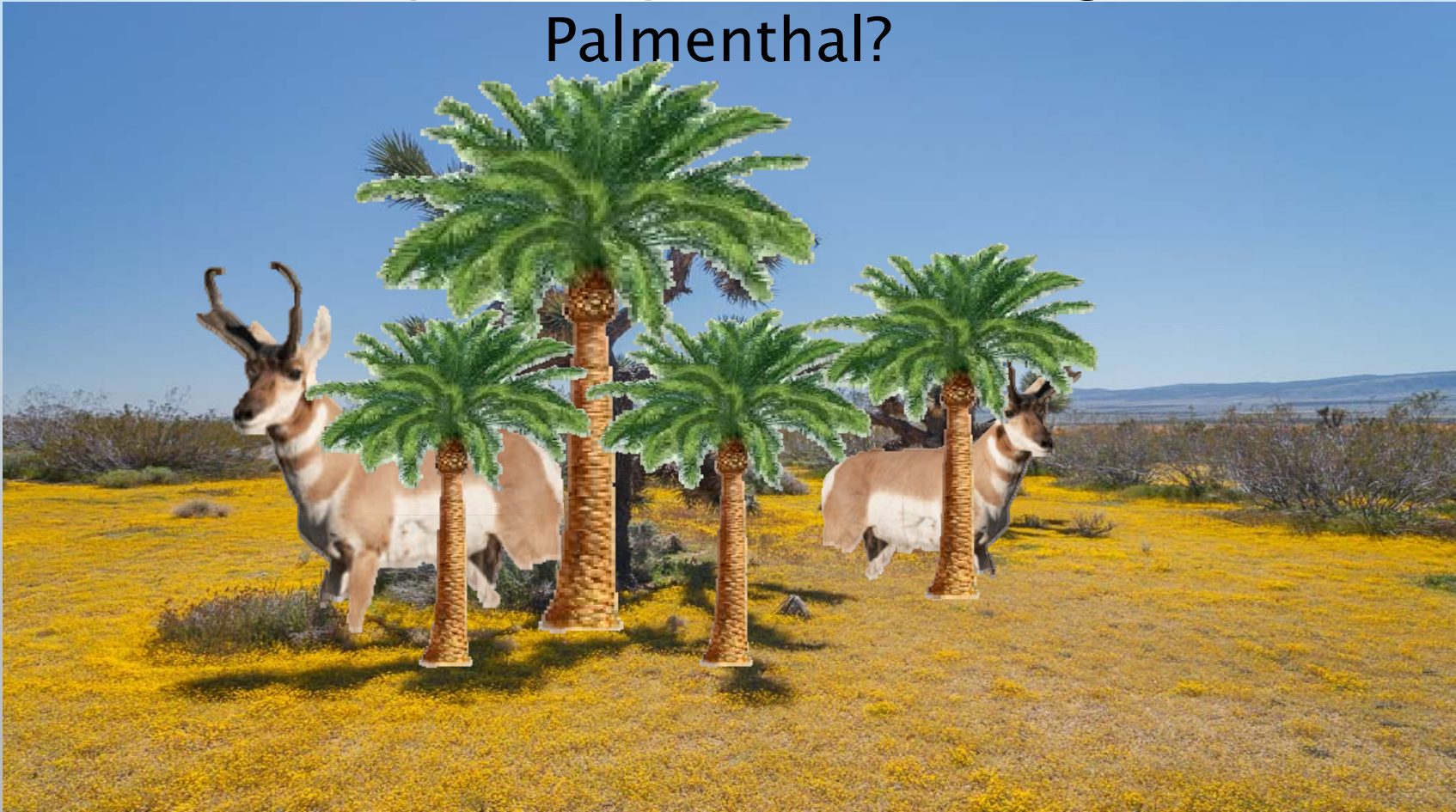
WHERE?

- EAST BRANCH OF SWP
- LOS ANGELES COUNTY
- ANTELOPE VALLEY
- CITY OF



INTERESTING BUT IRRELEVANT

Antelope Valley and The Village of Palmenthal?



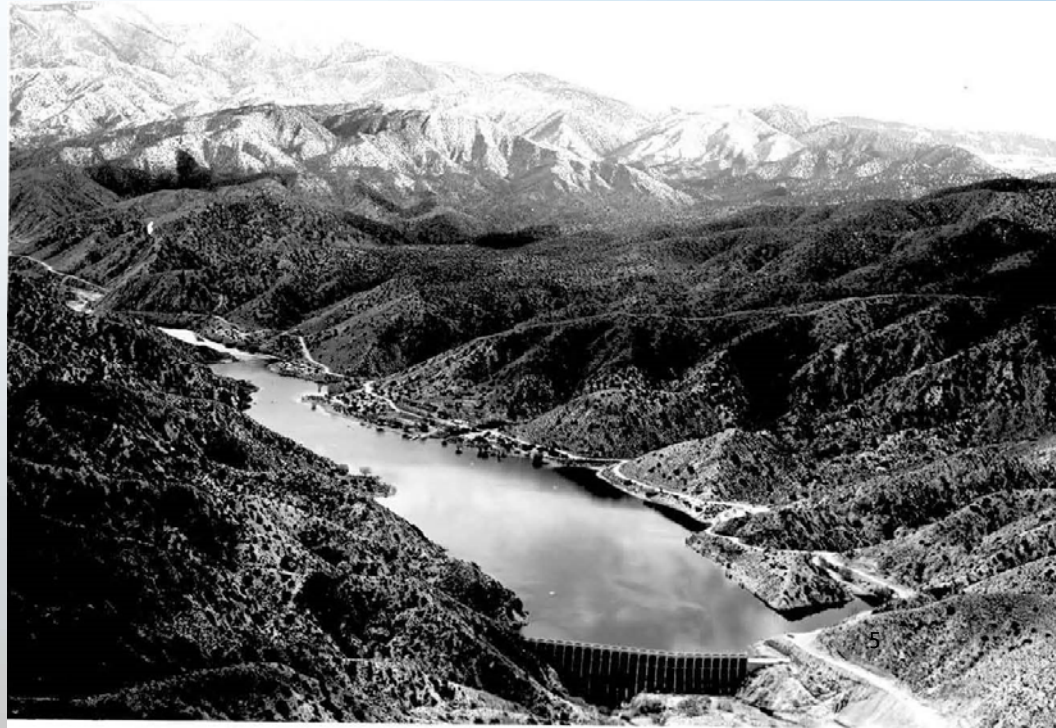
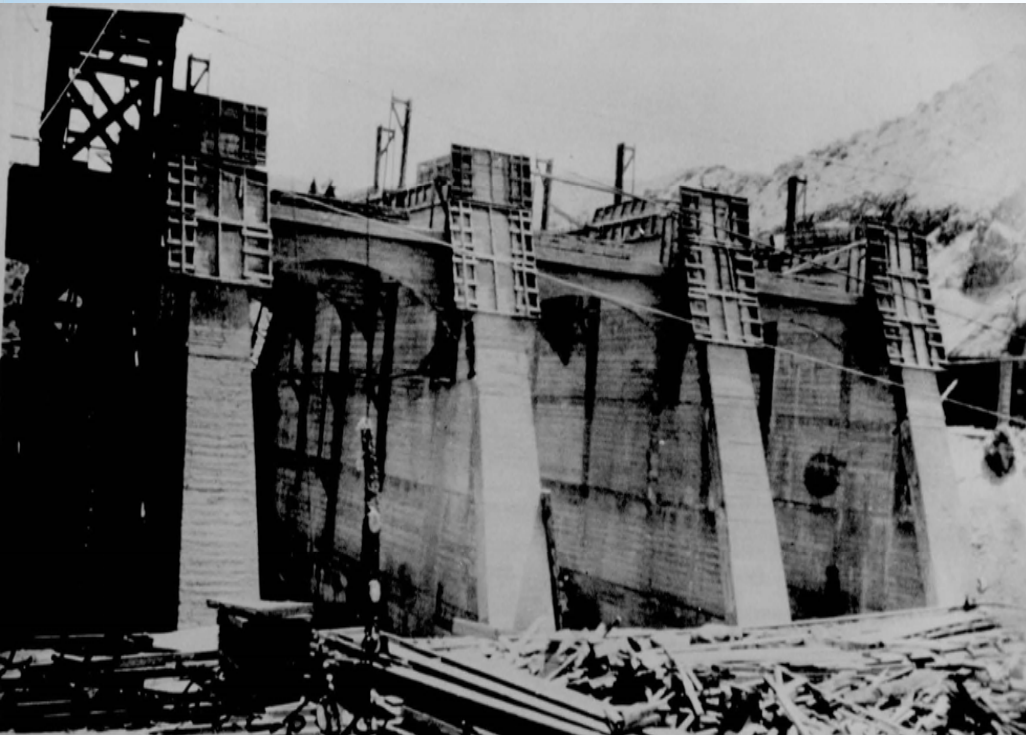
CLIMATE

- High Desert
- Low precipitation
- High winds
- Summer temps as high as 115 F
- Winter temps as low as 13 F

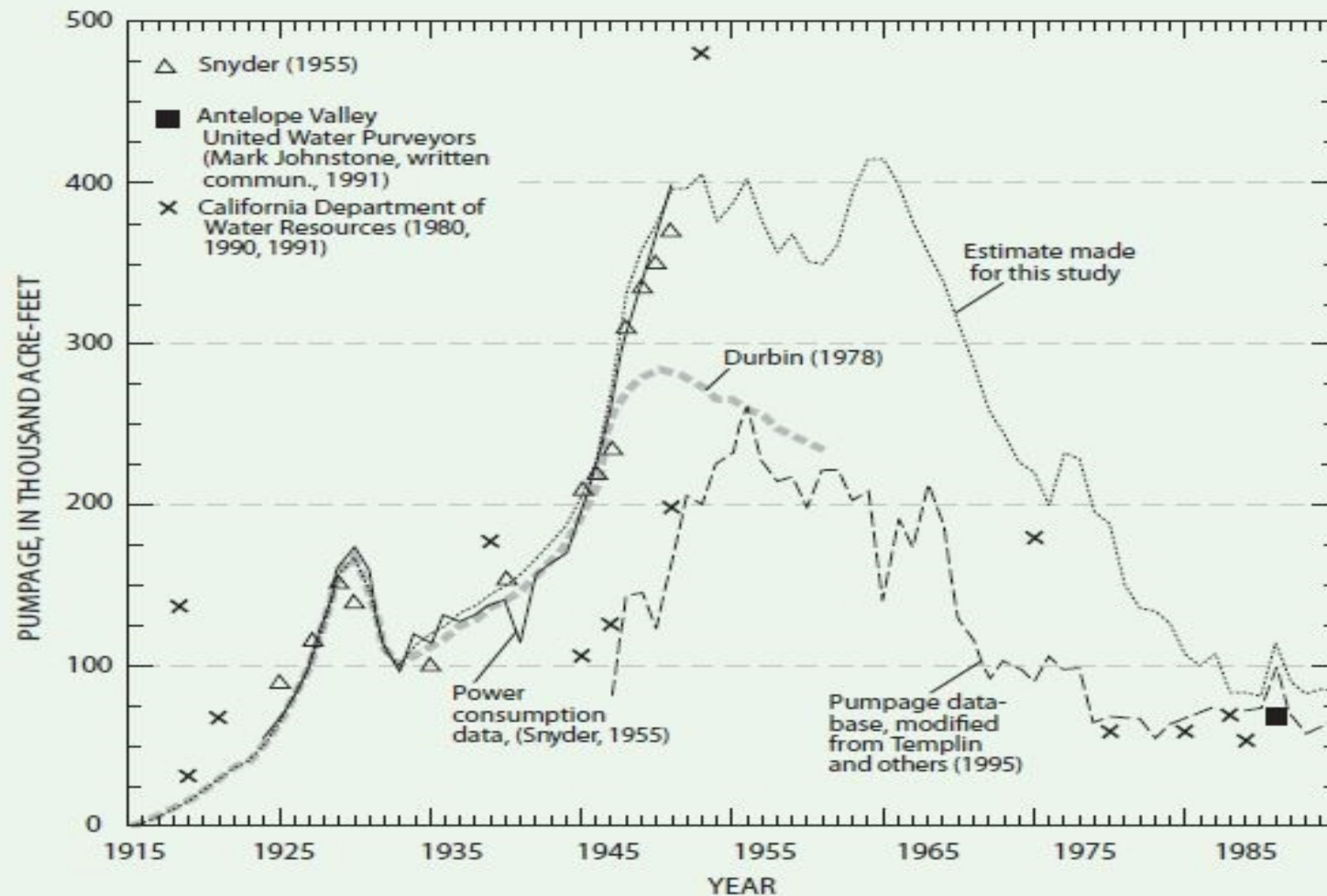


BACK IN THE OLD DAYS

Palmdale Irrigation District Formed in 1918



AGRICULTURE BOOM 1910-1960

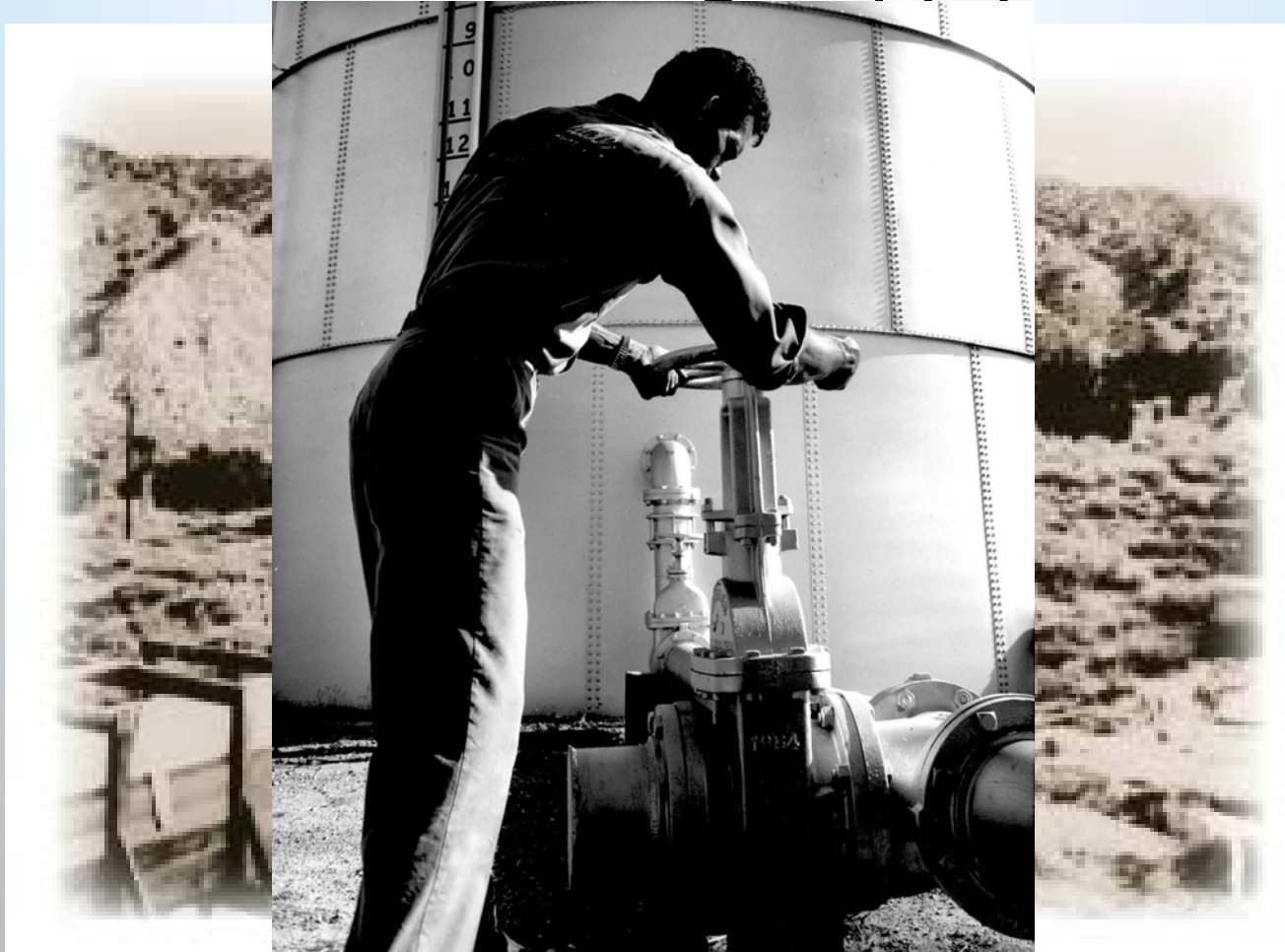


ANTELOPE VALLEY 1950'S- TRANSITIONS

From The Final Frontier.....



PALMDALE IRRIGATION DISTRICT 1950'S- To Domestically



PID 1963-SWP AGREEMENT



1973-PID BECOMES PWD



MORE RECENT MILESTONES

1985–First Delivery from SWP into Lake Palmdale

1987–Completion of Drinking Water Treatment Plant

1992–Expansion of WTP from 12 MGD to 28 MGD

1994–Completion and Expansion of Littlerock Dam to 3700 AF Capacity

2004– Installation of 950 KW Net Metered Wind Turbine at WTP Site

2009–Upgrade and Expansion of WTP to 35 MGD–Efficient GAC Polishers for TTHM Control



SOURCES

Littlerock Reservoir

- Originally constructed 1924
- Joint share in water supply with Littlerock Creek Irrigation District
- Reservoir capacity of 3700 AF
- Annual yield to PWD 500–4000 AF
- Accounts for 10% of water supply.



SOURCES

Ground Water



- 24 active groundwater wells
- Annual production between 9,000 AF–12,000 AF
- Accounts for 40% of total water delivered.
- High quality water requiring disinfection₁₃ only.

SOURCES

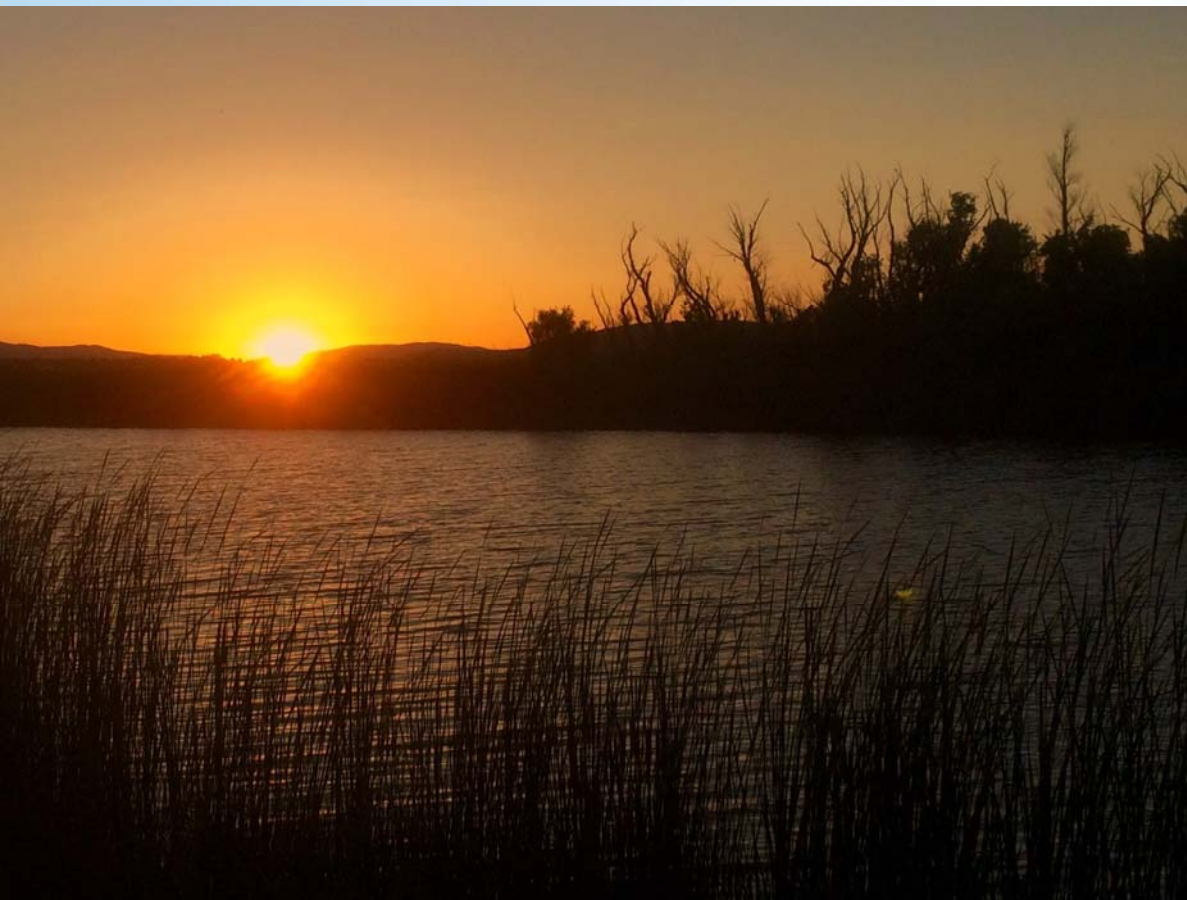
State Water Project

- Table A allotment of 21,300AF
- Delivered into Lake Palmdale through 250 KW hydro turbine
- Accounts for 50% of water supply



RESERVOIR

Lake Palmdale



- Receives water from both Littlerock reservoir and state water project.
- 4,100 AF capacity
- Equipped with seven SolarBees to reduce algal blooms
- Is home to the Fin and Feather private fishing and hunting club
- Delivers surface water to PWD's Leslie O. Carter water

INTERESTING BUT IRRELEVANT

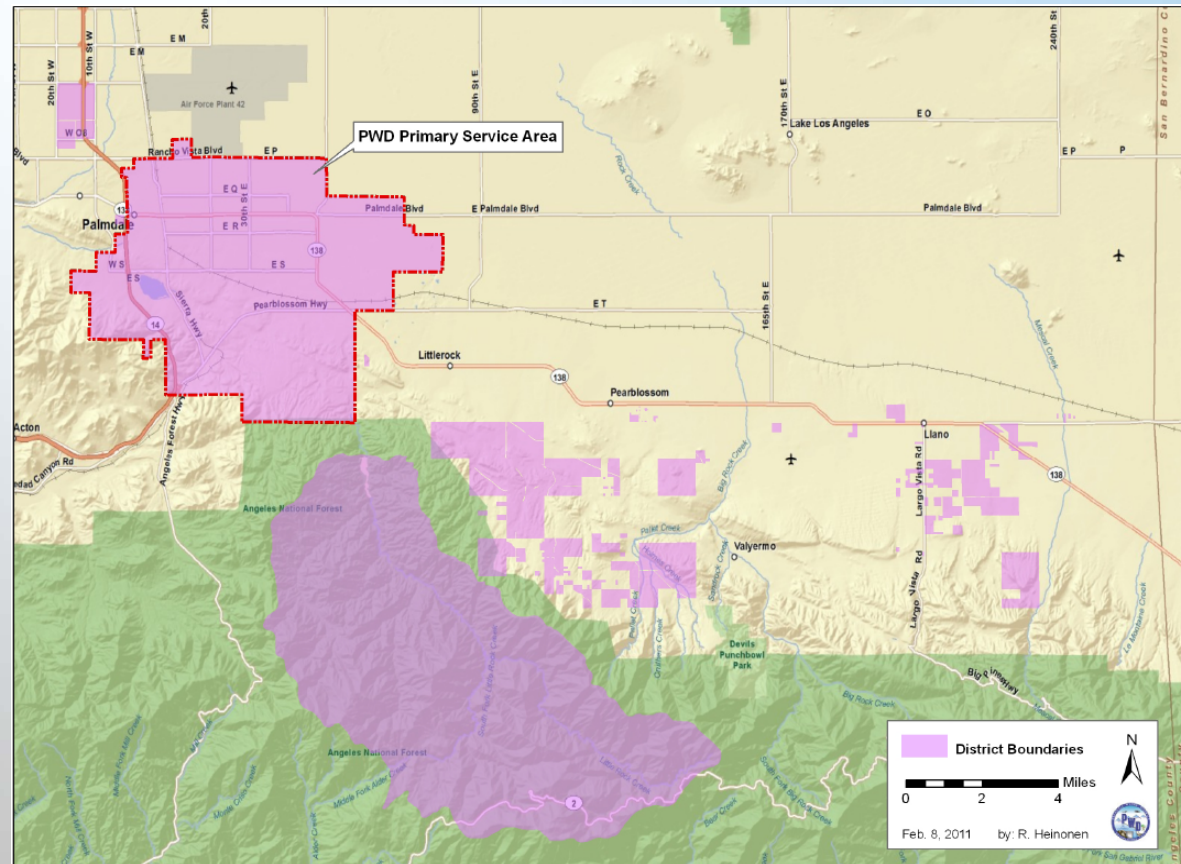
Lake Palmdale's Legendary Evil Neighbor



PALMDALE WATER DISTRICT TODAY

Vital Statistics

- Provides Retail Service to a Population of 118,000
- 28,000 Service connections
- Primary Service Area Covers 46 Square Miles



PALMDALE WATER DISTRICT TODAY

Vital Statistics

- Economy and local growth are still impacted by aerospace
- Commuter community to Los Angeles



RECENT CHALLENGES

DROUGHT



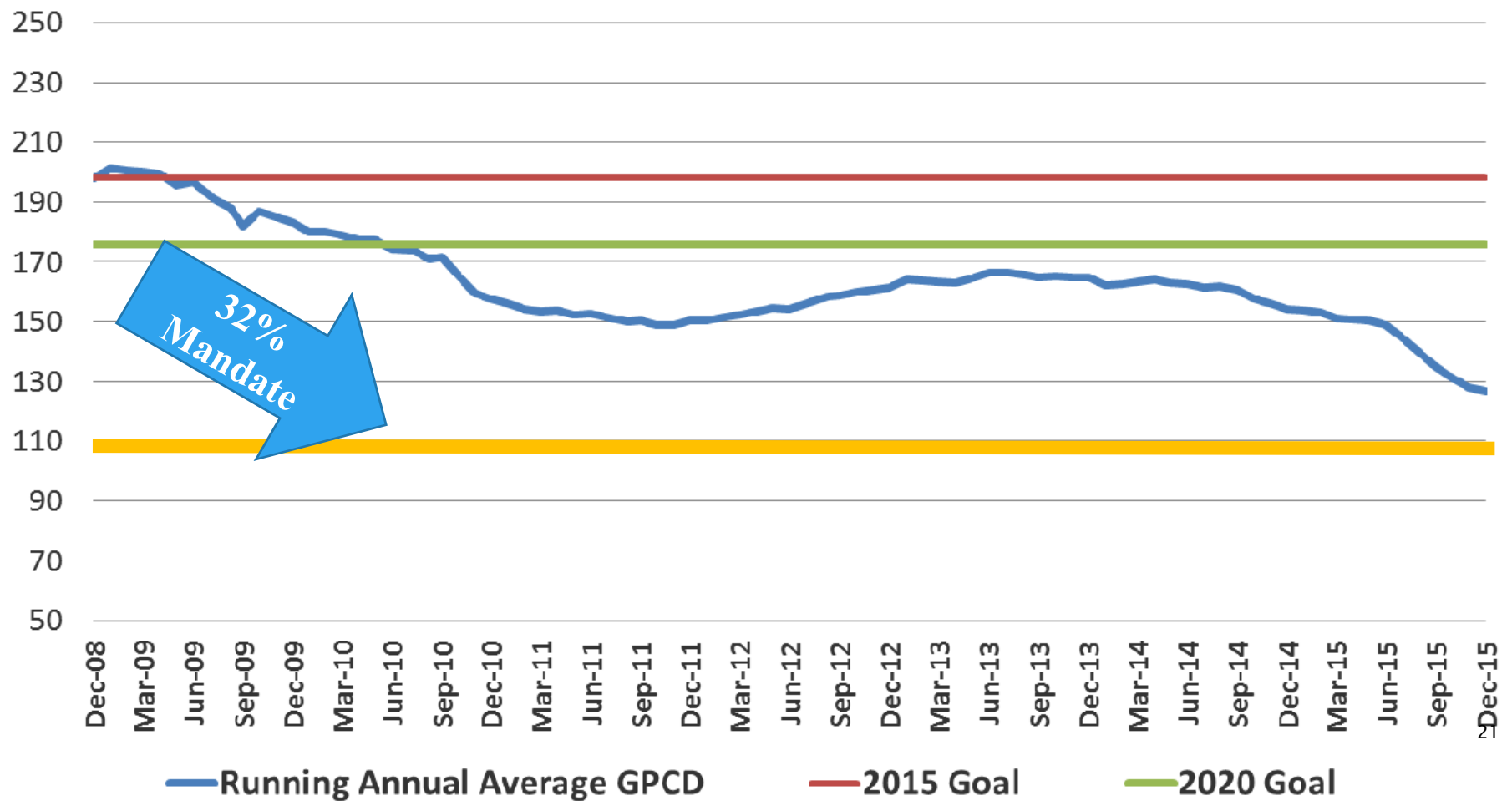
RECENT CHALLENGES

Conservation



- 2008 GPCD of 230
- 2009 Adoption of Tiered Rate Structure
- Hit SBX7-7 target in 2010
- 2013 GPCD of 160
- Low Usage for High Desert Climate
- 2015 32% Reduction Mandate
- Wide Spread Messaging and Surcharge reduced GPCD below 130 in 2015
- Still Did Not Hit Mandated Target

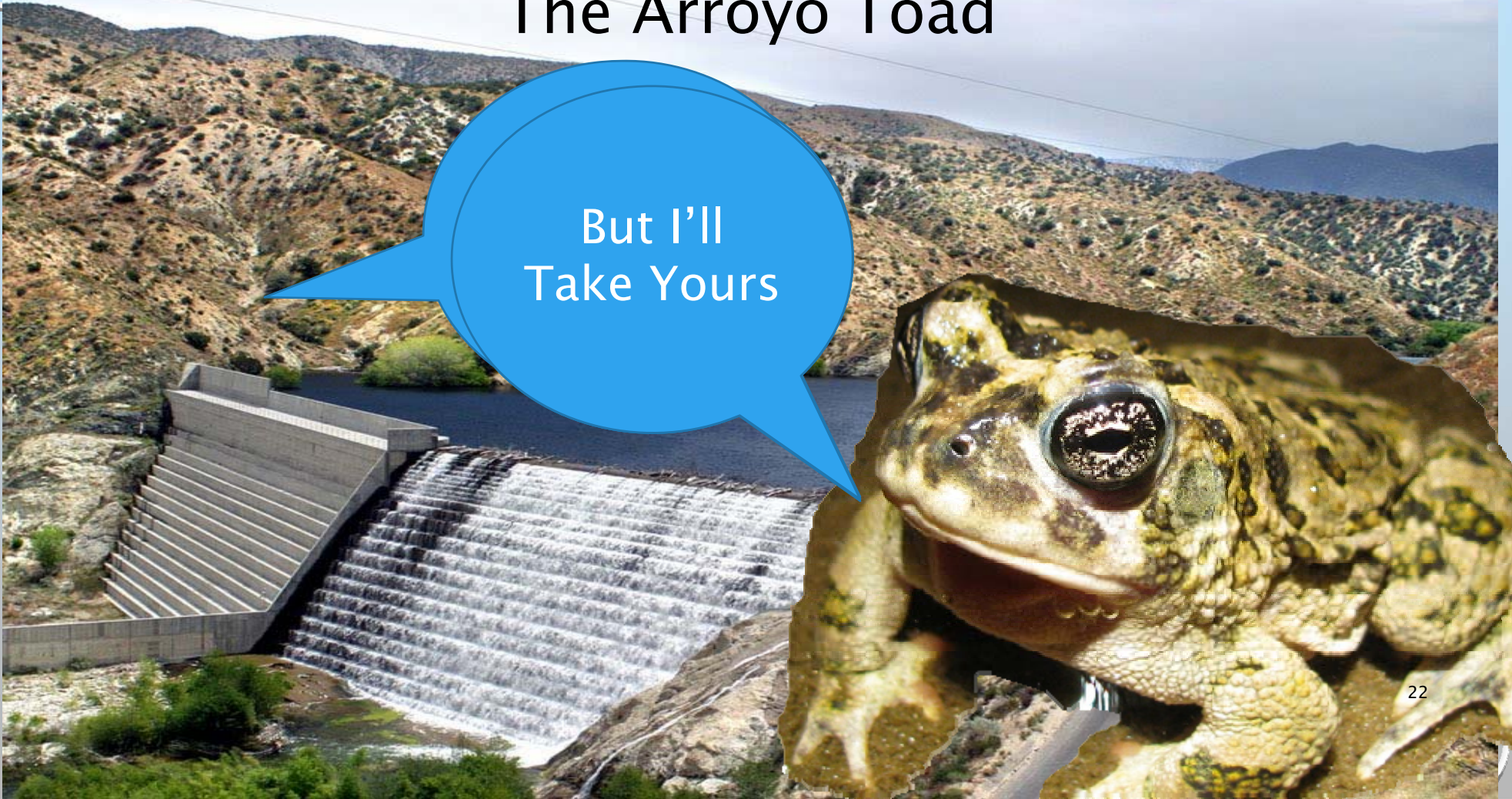
PWD 12-Month Running Average Total Per Capita Water Use



CURRENT CHALLENGES

The Arroyo Toad

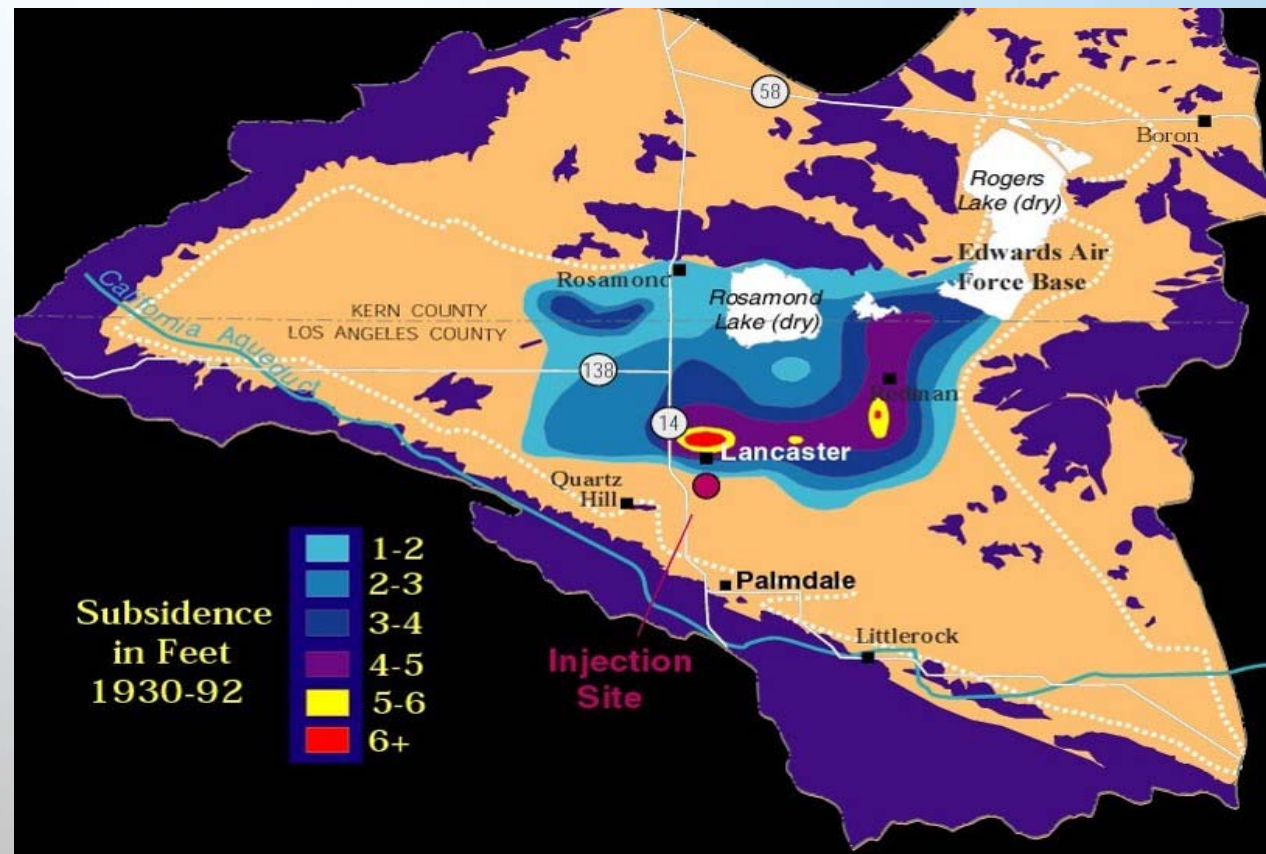
But I'll
Take Yours



CURRENT CHALLENGES

Ground Water Adjudication

- Settled in 2015
- Significantly ramps down all parties pumping over the next 6 years.



PWD FUTURE

Palmdale Regional Groundwater Recharge and Recovery

