

Lake Oroville Spillway Incident: Timeline of Major Events February 4-25

**1 February 7:** As water releases from the flood control spillway ramp up to 54,500 cubic feet per second (cfs), in anticipation of inflows expected from rainfall, DWR employees notice an unusual flow pattern. Spillway flows stop for investigation. Engineers find large area of concrete erosion.

**2 February 8:** DWR begins ongoing consultation with FERC and other dam safety agencies. DWR runs test flows down the damaged spillway, monitoring further erosion, and prepares for possible use of emergency spillway. 24/7 emergency interagency operations centers activate to study and implement response to flood control spillway and related structures, with careful study of weather forecasts.

**3 February 11:** Inflow to Lake Oroville brings lake level above 901 feet. This engages the emergency spillway for the first time in the history of the facility.

**4 February 12:** Anticipated erosion begins to progress faster than expected at the base of the emergency spillway. The Butte County Sheriff's Office issues mandatory evacuation orders for the Oroville area. To ease pressure on the emergency spillway, the flood control spillway outflow is increased to 100,000 cfs. After several hours, inflows decrease and overflow stops at the emergency spillway. Erosion to the emergency spillway hillside is assessed.

**5 February 13:** DWR crews begin working around the clock to repair the emergency spillway. Evacuation orders remain in effect.

**6 February 14:** As the lake level continues to drop, the mandatory evacuation order is modified to an evacuation warning. Crews continue working around the clock to repair the emergency spillway. An elevation of 850' is targeted for lake level.

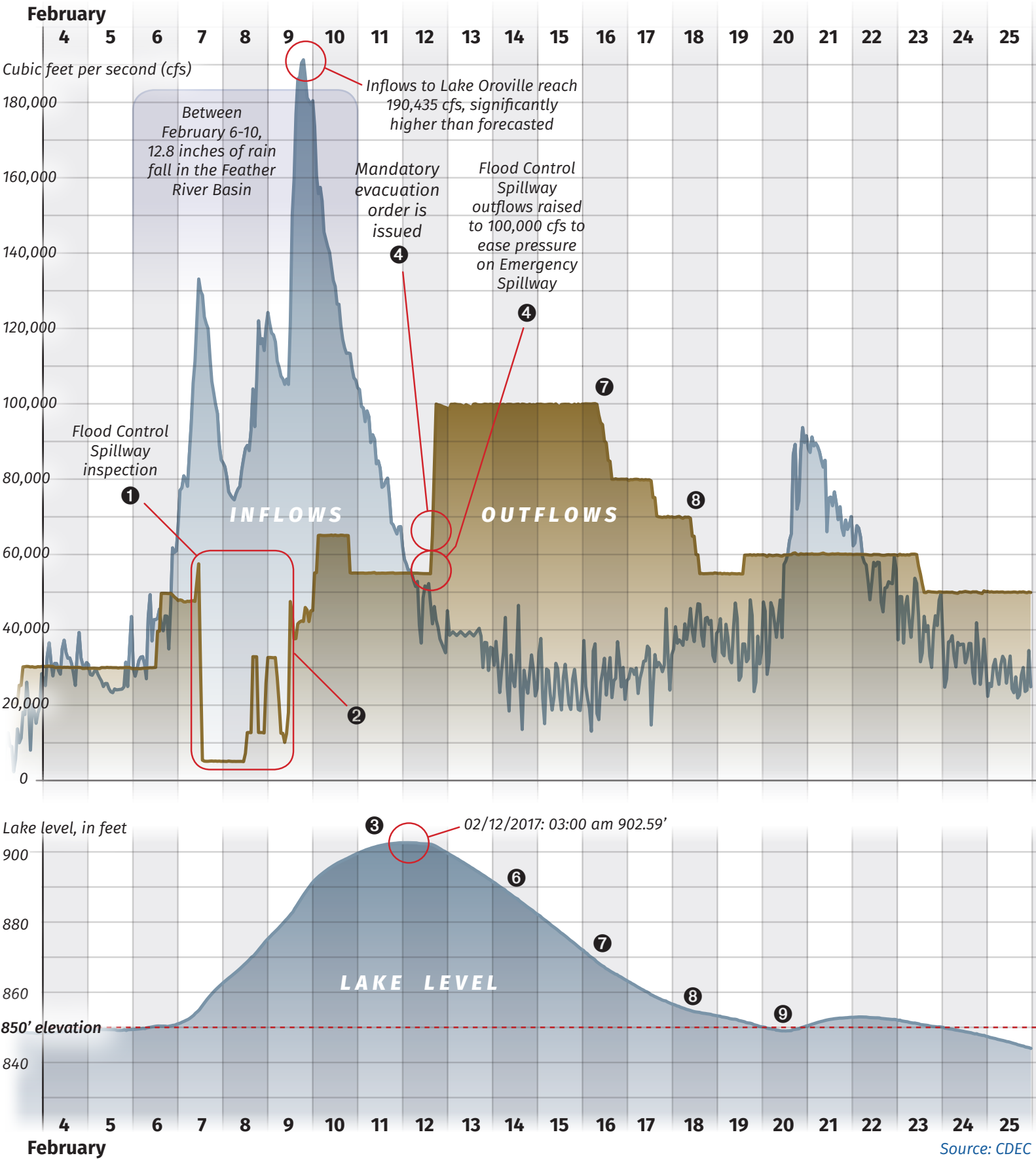
**7 February 16:** Flood control spillway flows are reduced below 100,000 cfs to facilitate the clearing of debris from below the spillway. Lake levels continue to drop. Construction to armor the emergency spillway continues.

**8 February 18:** Lake level down to 854 feet. Flood control spillway flows are reduced to 55,000 cfs. Barge construction begins in order to remove debris from the diversion pool beneath the spillway.

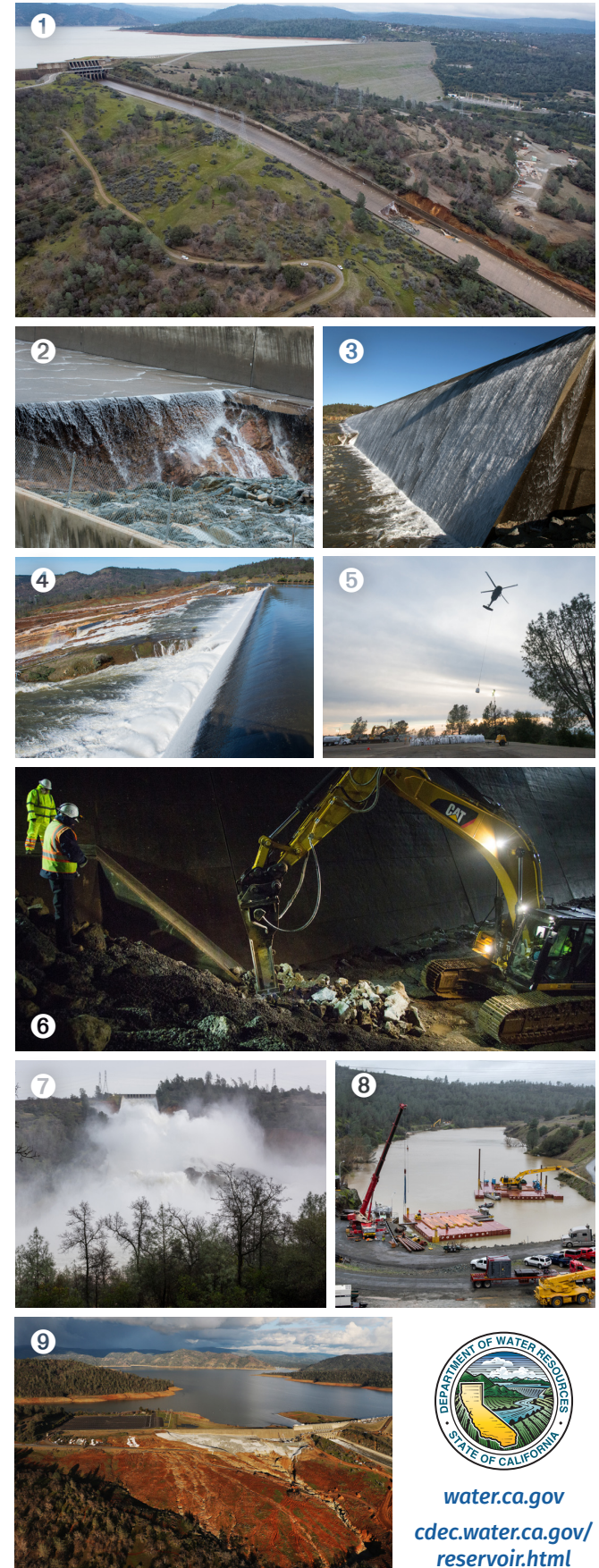
**9 February 20:** Lake Oroville elevation reaches 848.95 feet at 11 a.m. Repairs and preparations continue around the clock.

**Cooperating Agencies:** California Department of Water Resources, Butte County Sheriff, CAL FIRE, Oroville Police Department, Butte County OES, Oroville Fire Department, Butte County Public Works, Oroville Hospital, Caltrans, California Highway Patrol, California State Parks, California Conservation Corps, California National Guard, California Department of Fish and Wildlife, PG&E, Red Cross, Bureau of Indian Affairs, CAL OES, USACE, FERC, FEMA

For more imagery, see DWR Pixel Library



Oroville Spillway Public Info Line: (530) 538-7826



water.ca.gov  
cdec.water.ca.gov/  
reservoir.html





Portion of image derived from GoogleEarth source

**Cooperating Agencies:** Butte County Sheriff, Oroville Police Department, Butte County OES, Oroville Fire Department, Butte County Public Works, Oroville Hospital, California Highway Patrol, California State Parks, PG&E, CAL FIRE, Caltrans, Red Cross, California Conservation Corps, California National Guard, California Department of Fish and Wildlife, Bureau of Indian Affairs, CAL OES, USACE, FERC, FEMA

**For more imagery see DWR Pixel**

- Emergency Spillway Work Area ①** DWR continues to reinforce the Emergency Spillway and re-establish access roads, with construction crews working around the clock.
- Emergency Spillway Discharge Zone ②** This area has been inspected and continues to be monitored for any erosion. Transmission lines have been inspected and function normally.
- Flood Control Spillway Control Structure ③** Monitoring of structure continues. Operations are normal.
- Flood Control Spillway Damage Zone ④** Assessment of structure continues as flows are reduced. Plans to maintain and repair the structure will be presented as they develop.
- Thermalito Diversion Pool to Hyatt Powerplant ⑤** Erosion debris to be removed in order to begin operations at Hyatt Powerplant as soon as practical.
- Hyatt Powerplant/ Diversion Pool Tailrace ⑥** Reducing the water surface elevation of the tailrace will be accomplished through the downstream debris removal process, thus allowing for Hyatt Powerplant startup.
- Monitoring Truck Traffic on Oroville Dam Roads:** Effects of vehicle travel on Oroville Dam Road and Oro Powerhouse Road are being closely monitored.
- Trails and Boat Launch Ramps:** The Brad Freeman and Dan Beebe Trails in the area around the Diversion Pool have been closed. The Spillway Boat Ramp will remain closed until further notice. For current information on launch ramps, visit the [State Parks website](#).
- Road Blocks/Security Checkpoints:** Oroville Dam East at Glen Drive; Oroville Dam East at Canyon Drive; Dam Crest Road at Spillway Access Road; Canyon Drive at Royal Oaks Drive.



[water.ca.gov](http://water.ca.gov)

<https://cdec.water.ca.gov/reservoir.html>