



**PALMDALE WATER DISTRICT**  
A CENTURY OF SERVICE

# Resource Reliability & Operational Efficiency – Projects Needed

2020 - 2024

# Resource Reliability

The District will develop and implement programs to meet the water needs of our customers and sustain the growth of the community at a reasonable cost.

- Our Water System Master Plan reflects our growths and needs
- Develop a recycled water system
- Diversify our water portfolio for reliability
- Manage our resources to ensure good water quality



PALMDALE WATER DISTRICT  
A CENTURY OF SERVICE

# Operational Efficiency

The District will develop and implement programs to effectively and efficiently manage our water system.

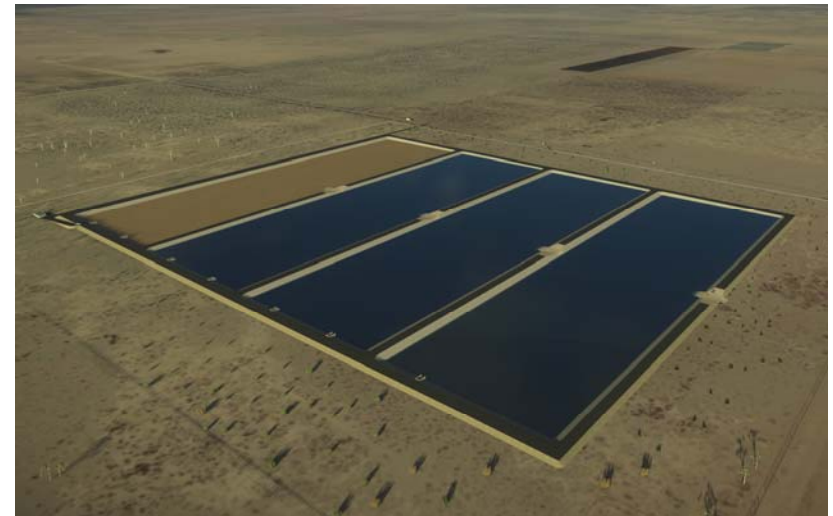
- Develop an asset management program
- Implement a conservation education program
- Build resiliency into our system
- Have an effective safety program



PALMDALE WATER DISTRICT  
A CENTURY OF SERVICE

# Resource Reliability

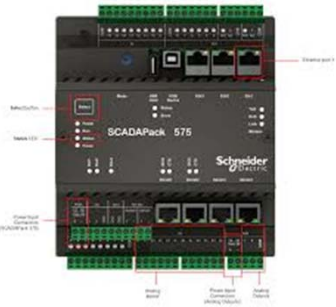
- Palmdale Recycled Water Recharge Project
  - Water diversification
- Well Rehabilitation
  - Maintain groundwater capacity
- Future Well
  - Well at end of useful life
- Lake and Ditch Maintenance
  - Moving and storing water for future uses



PALMDALE WATER DISTRICT  
A CENTURY OF SERVICE

# Operational Efficiency

- Pipeline Replacement
  - 23 projects to improve flow & pressure and reduce leaks.
- Booster Rehabilitation
  - ~3-5 booster/year due to wear & tear
- Chlorine Generators
  - 21 projects to replace end-of-life equipment
- Large Meter w/Vault
  - Replace 25 meters for accurate water sales
- Communication System
  - Replace radios and SCADA Communication
- Engines
  - Swap out engines for energy saving



PALMDALE WATER DISTRICT  
A CENTURY OF SERVICE



# Operational Efficiency



- Stairs & Reservoir Safety Retrofit
  - Improve access at these facilities
- Equipment
  - Replace and update various equipment to meet today's needs
- Pump Replacement
  - Replace end-of-life process pump at treatment plant
- Sedimentation Basin Coating
  - Extend the life of the treatment plant
- Meter Replacement Program
  - Complete the program, ~ 5,500 meters



PALMDALE WATER DISTRICT  
A CENTURY OF SERVICE

# Operational Efficiency

- 22 Vehicle Replacements
  - Range in age from 1988 – 2008, 4K – 7K hours
- Vacuum Excavator
  - Efficiently and safely excavate around existing utilities
- Peterbilt Cat C-7 Motor Rebuilds
  - Extend operational life of existing equipment
- Forklift
  - Replace inefficient, underpowered and outdated forklift



PALMDALE WATER DISTRICT  
A CENTURY OF SERVICE

# Resource Reliability & Operational Efficiency



PALMDALE WATER DISTRICT  
A CENTURY OF SERVICE



# Resource Reliability & Operational Efficiency



PALMDALE WATER DISTRICT  
A CENTURY OF SERVICE

# Resource Reliability & Operational Efficiency



PALMDALE WATER DISTRICT  
A CENTURY OF SERVICE

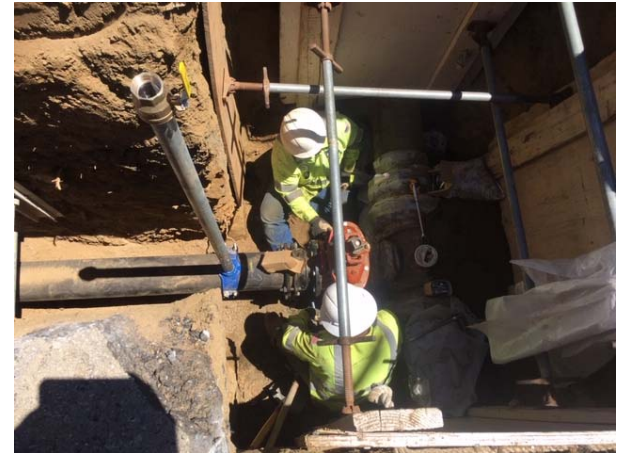


# Resource Reliability & Operational Efficiency



PALMDALE WATER DISTRICT  
A CENTURY OF SERVICE

# Resource Reliability & Operational Efficiency



PALMDALE WATER DISTRICT  
A CENTURY OF SERVICE



# QUESTIONS?



**PALMDALE WATER DISTRICT**  
A CENTURY OF SERVICE