

The background of the slide is a light blue gradient. It is decorated with several white, stylized bubbles of various sizes. Some bubbles are simple outlines, while others have a white highlight to give them a 3D effect. They are scattered across the slide, with a higher concentration in the upper left and lower right areas.

# ACWA REGULATORY CONFERENCE 2016

## A FOCUS ON ENERGY

# Created the Great Solar Duck!

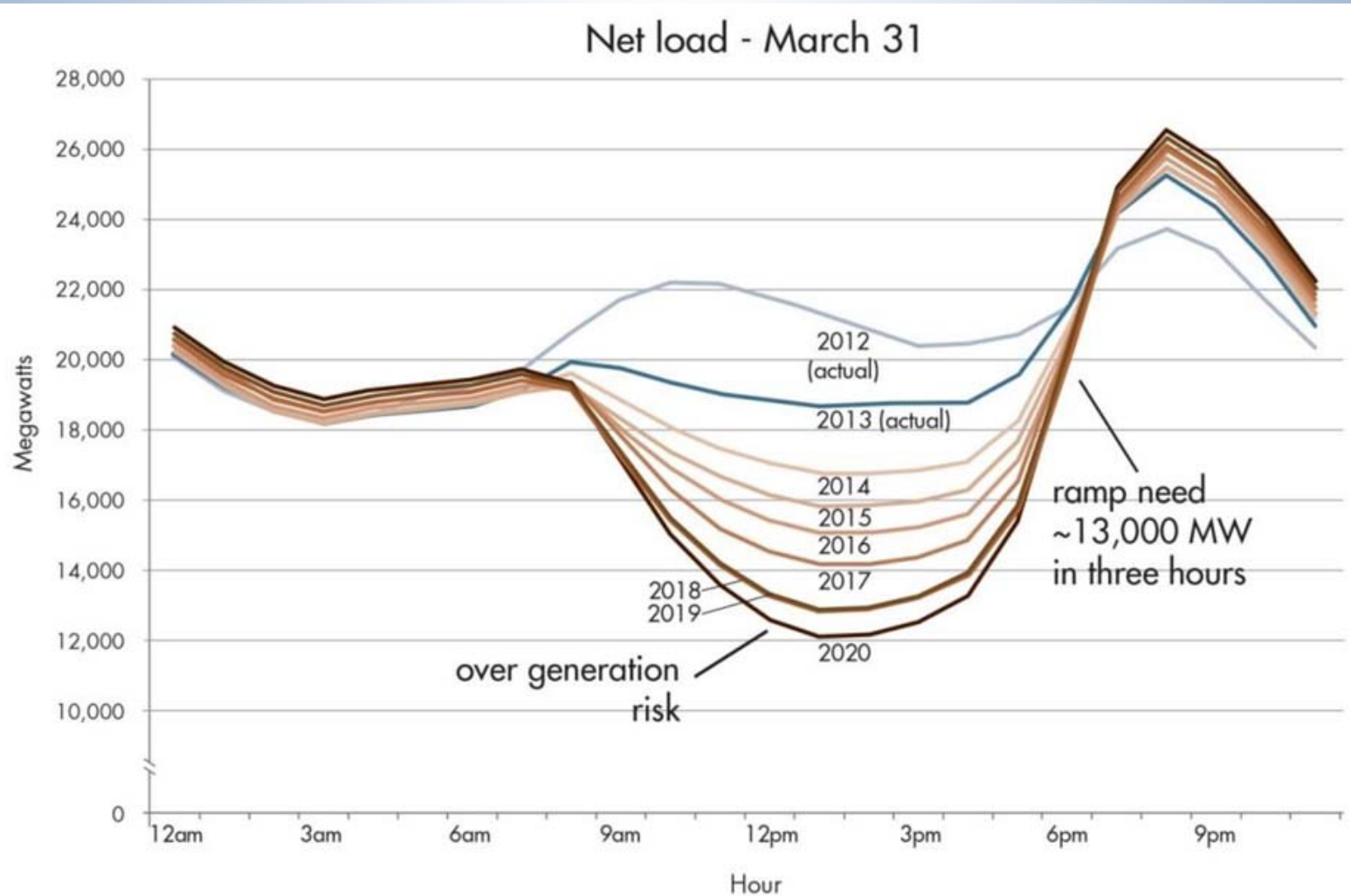
## CHANGE!



# THE KEY CALIFORNIA POLICIES

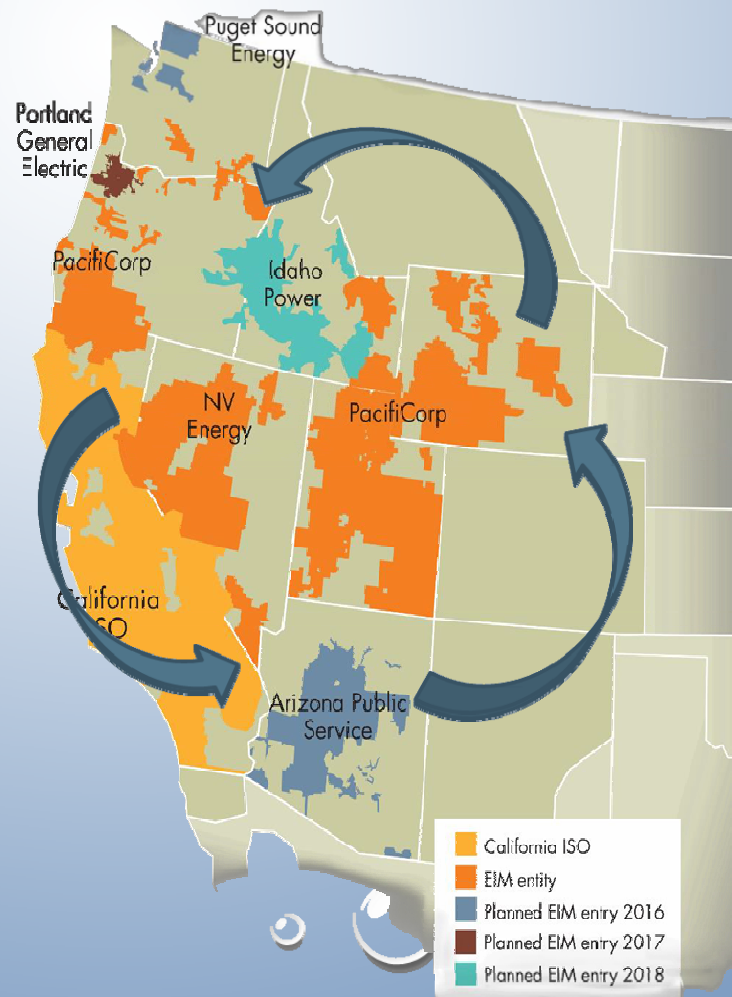
- 2020 Policies
  - Greenhouse gas reductions to 1990 levels
  - 33% of load served by renewable generation
- 2030 Policy Goals
  - Greenhouse gas reductions to 40% below 1990 levels
  - 50% of load served by renewable generation

# THE SOLAR DUCK



# REGIONAL CHANGE

## Western U.S.A. Energy Distribution Coordination





# TECHNOLOGY CHANGE

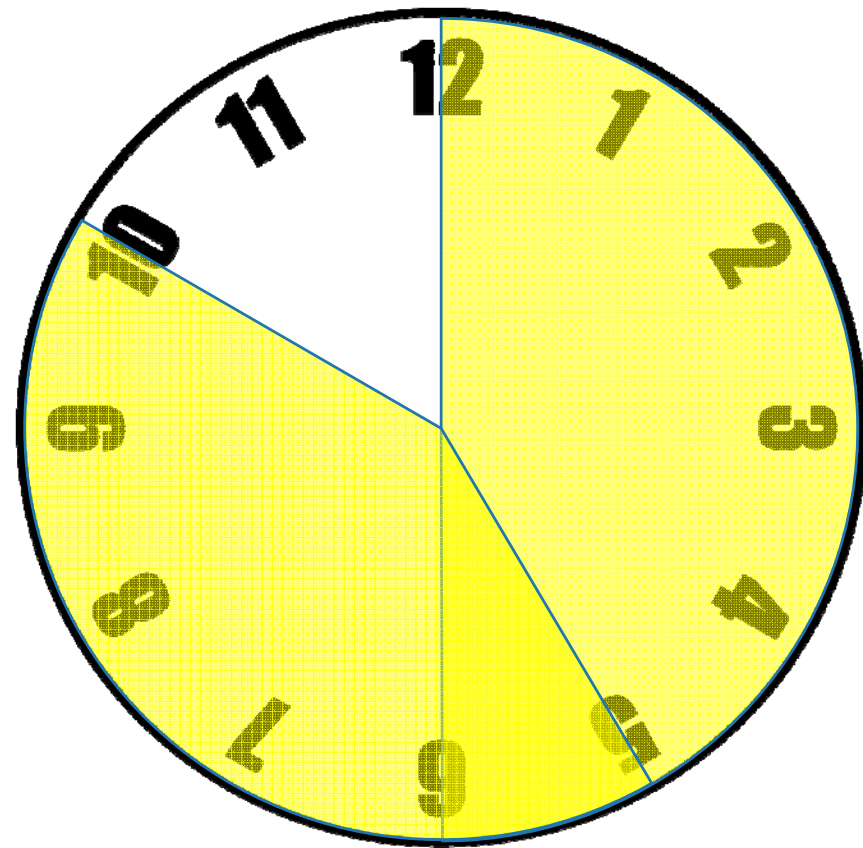
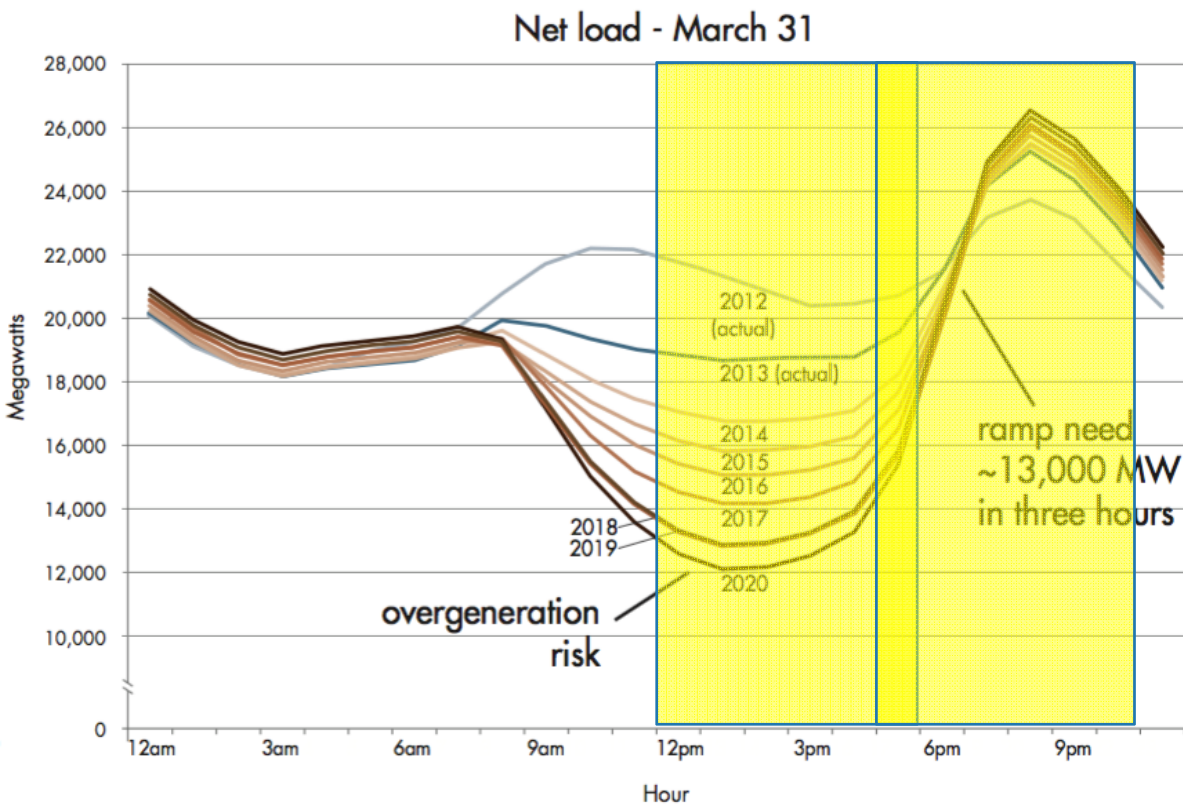
## Energy Storage



# ENERGY RATE CHANGE

## Shifting “Time of Use” Rates

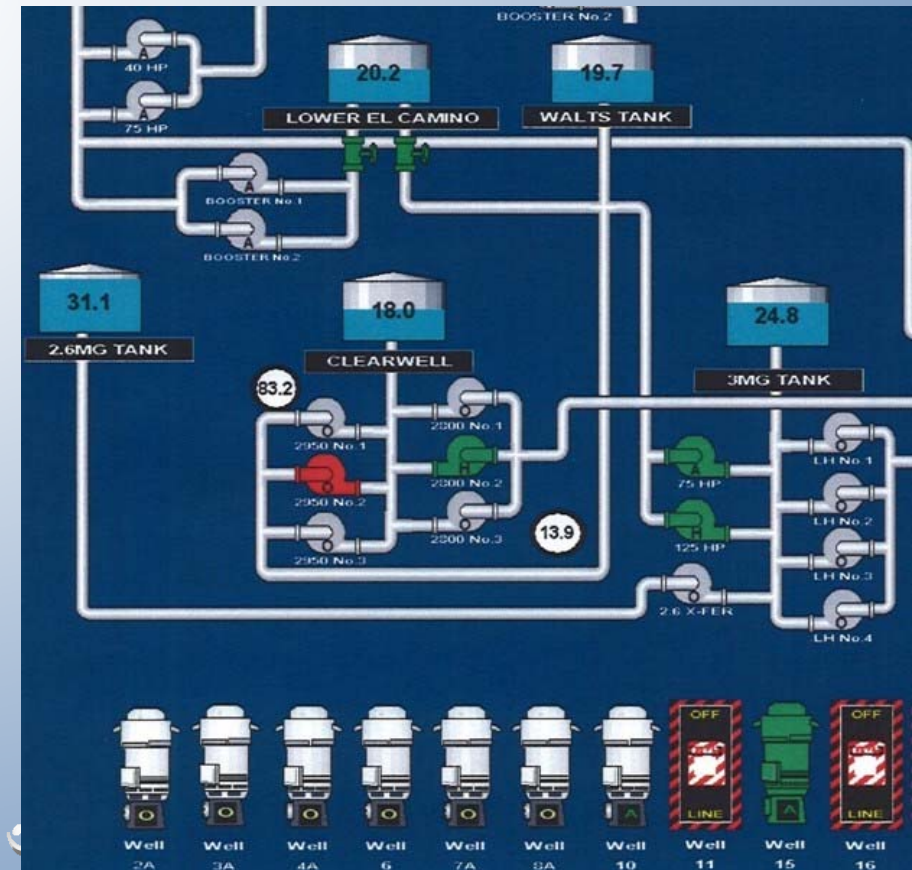
Figure 2: The duck curve shows steep ramping needs and overgeneration risk



# ENERGY PROGRAM CHANGE

## New “Demand Response” Programs

- Shifting Times
- From “Cut Back” To “Ramp Up”





# PWD ENERGY FOCUS POINTS FOR 2017

## New “Demand Response” Programs

### Adapting Operations to:

- Rate Shifts
- Demand Response Program Changes

## Exploring Energy Storage Options

- Facility Demand Charge Reduction

