



PALMDALE WATER DISTRICT
A CENTURY OF SERVICE

AGENDA ITEM NO. 6.2 - UPDATED

2019 Winter Maintenance @ Leslie O Carter Treatment Plant

Board Presentation
March 11, 2019



Timeline

- January 16th : Prepare distribution system for plant shutdown.
- January 17th : Shutdown plant.
- January 21st : Staff working on repair to the WTP Effluent line.
- February 11th : Start-up plant.
- February 13th : Disinfect Clearwell to return to service.



Maintenance List

- Plant Effluent Line Repair
- Ferric Tank, Orion Gauge Tube Replacement
- Sedimentation Basin/ Raw Water Channel Cleaning
- Flocculator Maintenance
- Original Brine Tank Manifold Re-Build
- Second Brine Tank Placement & Securement
- Hypo Tank Cleaning



WTP Effluent Line Repair



PALMDALE WATER DISTRICT
A CENTURY OF SERVICE

Remove Old Pipe &



New Pipe Installed



Remove Old

&

New Installed



PALMDALE WATER DISTRICT
A CENTURY OF SERVICE

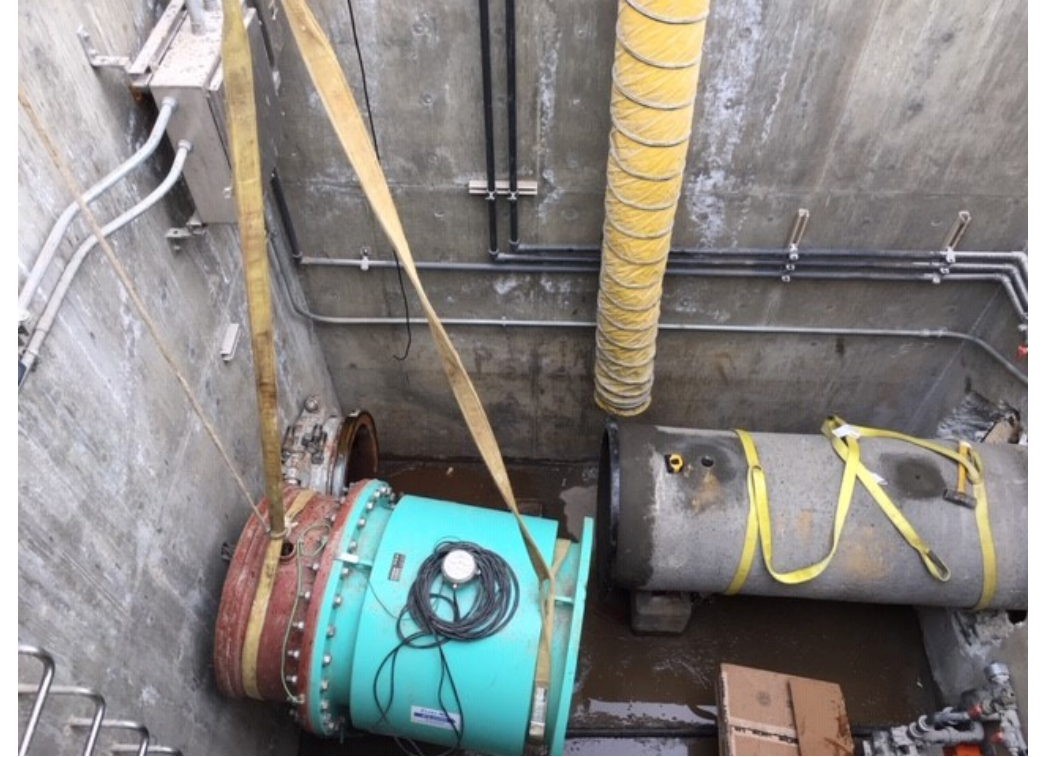
Breaking Through

- Old Removed



PALMDALE WATER DISTRICT
A CENTURY OF SERVICE

New Going In

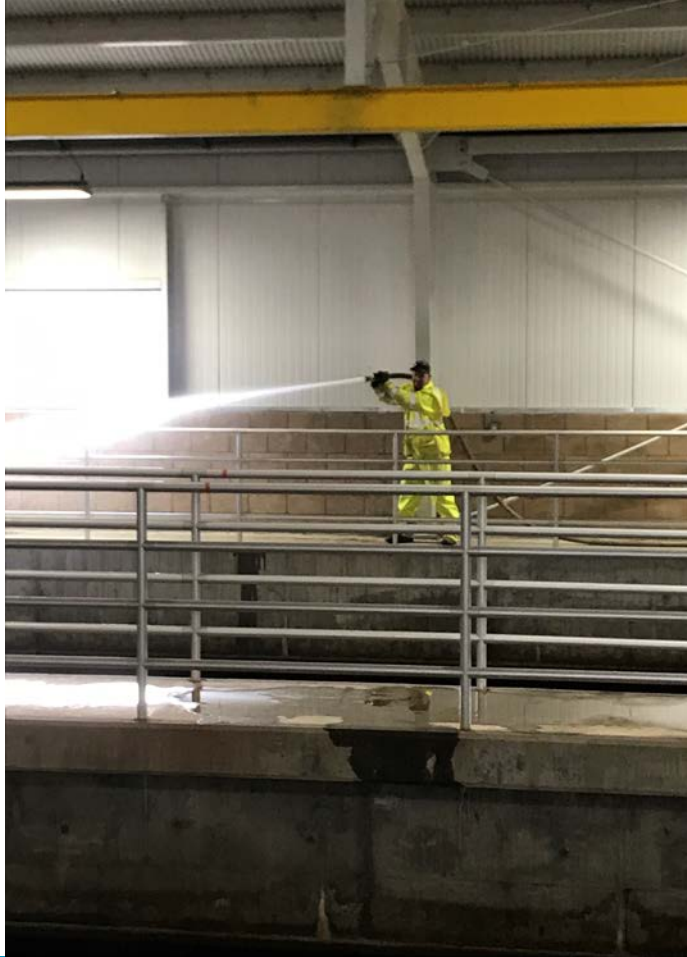


Tack Welding Flange & Removing to Finish



PALMDALE WATER DISTRICT
A CENTURY OF SERVICE

Sed Basin & Raw Water Channel Cleaning



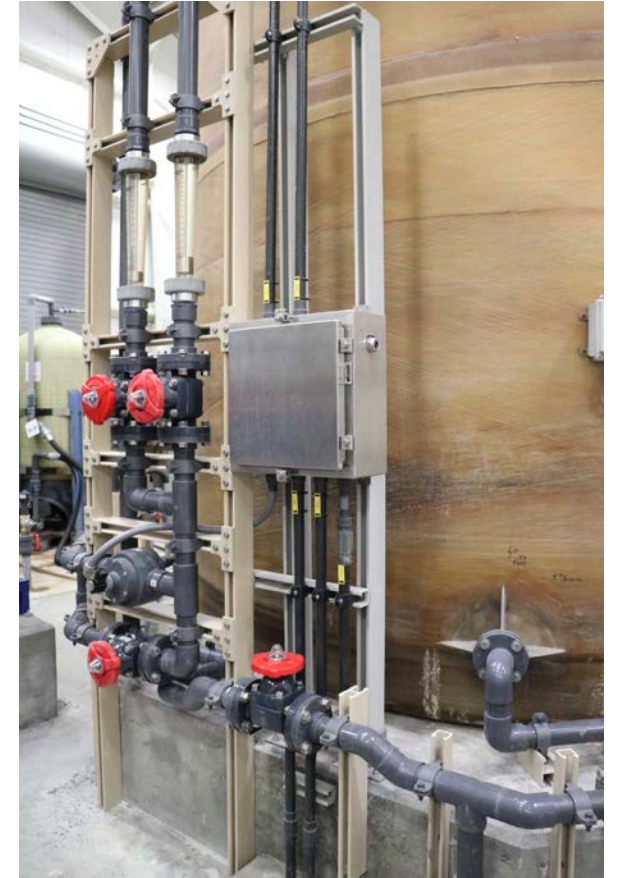
PALMDALE WATER DISTRICT
A CENTURY OF SERVICE

Flocculator Mixer Maintenance



PALMDALE WATER DISTRICT
A CENTURY OF SERVICE

Brine Tank Installations



Hypo Tank Cleaning & Ferric Tank Piping Repairs



PALMDALE WATER DISTRICT
A CENTURY OF SERVICE



PALMDALE WATER DISTRICT
A CENTURY OF SERVICE

Thank you!