



PALMDALE WATER DISTRICT

2029 East Avenue Q • Palmdale, California 93550 • Telephone (661) 947-4111
Fax (661) 947-8604
www.palmdalewater.org
ALESIRE & WYNDER LLP
Attorneys

Board of Directors

ROBERT E. ALVARADO
Division 1

JOE ESTES
Division 2

GLORIA DIZMANG
Division 3

KATHY MAC LAREN
Division 4

VINCENT DINO
Division 5

February 19, 2015

*Agenda for a Meeting
of the Water Supply & Reliability Committee of the Palmdale Water District
Committee Members: Gloria Dizmang-Chair, Vincent Dino
to be held at the District's office at 2029 East Avenue Q, Palmdale*

Monday, February 23, 2015

2:30 p. m.

NOTE: To comply with the Americans with Disabilities Act, to participate in any Board meeting please contact Dawn Deans at 661-947-4111 x1003 at least 48 hours prior to a Board meeting to inform us of your needs and to determine if accommodation is feasible.

Agenda item materials, as well as materials related to agenda items submitted after distribution of the agenda packets, are available for public review at the District's office located at 2029 East Avenue Q, Palmdale (Government Code Section 54957.5). Please call Dawn Deans at 661-947-4111 x1003 for public review of materials.

PUBLIC COMMENT GUIDELINES: The prescribed time limit per speaker is three-minutes. Please refrain from public displays or outbursts such as unsolicited applause, comments, or cheering. Any disruptive activities that substantially interfere with the ability of the District to carry out its meeting will not be permitted and offenders will be requested to leave the meeting.

Each item on the agenda shall be deemed to include any appropriate motion, resolution, or ordinance to take action on any item.

- 1) Roll call.
- 2) Adoption of agenda.
- 3) Public comments.
- 4) Action Items: (The public shall have an opportunity to comment on any action item as each item is considered by the Committee prior to action being taken.)

- 4.1) Consideration and possible action on approval of minutes of meeting held January 26, 2015.
- 4.2) Presentation of monthly water demand and supply status. (Water & Energy Resources Director Pemula)
- 4.3) Presentation on Littlerock Creek Recharge and Recovery Project. (Assistant General Manager Knudson)
- 4.4) Status on the operations of the State Water Project. (Water & Energy Resources Director Pemula)
- 5) Project updates.
 - 5.1) Littlerock Dam Sediment Removal Project. (Assistant General Manager Knudson)
 - 5.2) Palmdale Recycled Water Authority. (General Manager LaMoreaux)
 - 5.3) City of Palmdale's Upper Amargosa Recharge Project. (Assistant General Manager Knudson)
 - 5.4) Status on drought. (Water & Energy Resources Director Pemula)
- 6) Information items.
 - 6.1) Water purchase opportunities. (Water & Energy Resources Director Pemula)
 - 6.2) Other.
- 7) Board members' requests for future agenda items.
- 8) Adjournment.

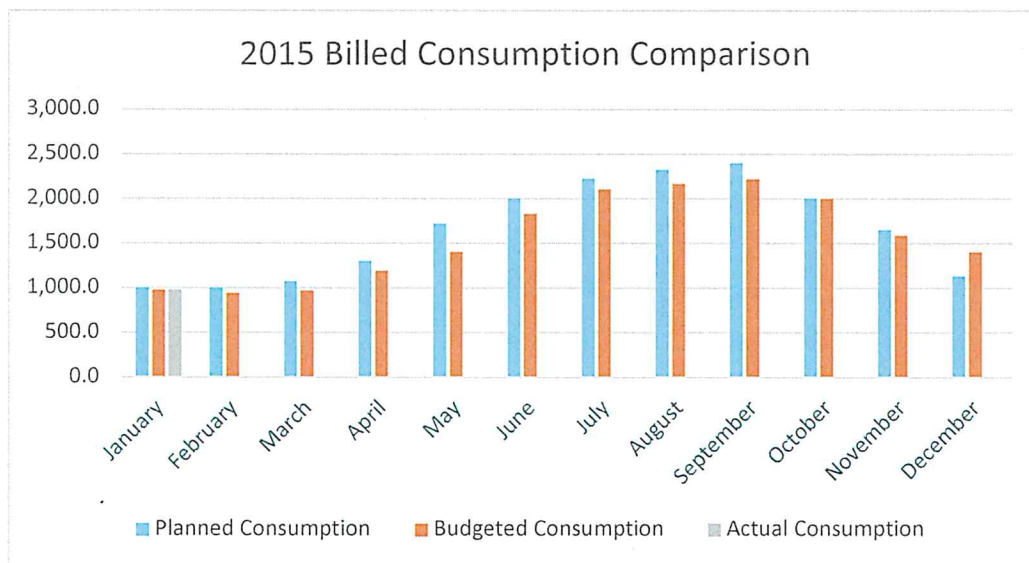


DENNIS D. LaMOREAUX,
General Manager

DDL/dd

AGENDA ITEM NO. 4.2

2015 BILLED CONSUMPTION				
Month	Projected	Budgeted	Actual	
January	1,000.0	979	977.3	
February	1,000.0	941	0.0	
March	1,070.0	970	0.0	
April	1,300.0	1,191.5	0.0	
May	1,720.0	1,405.0	0.0	
June	2,000.0	1,830.7	0.0	
July	2,225.0	2,104.6	0.0	
August	2,325.0	2,165.7	0.0	
September	2,400.0	2,219.2	0.0	
October	2,000.0	2,002.1	0.0	
November	1,650.0	1,588.3	0.0	
December	1,130.0	1,402.5	0.0	
Current AF	1,000.0	979	977.3	
Total	19,820.0	18,800	977.3	



15% PWD retains banked water

21,500 AF Needed Absent Conservation				Conservation % Required With Each Component
RESOURCE COMPONENT	SHORTAGE	ACRE FEET	CUMULATIVE	
Groundwater	-11000	10,500	10,500	51%
SWP Table A @15%	-7330	3,195	13,695	36%
Banked Groundwater AV	-5,334	2,471	16,166	25%
Littlerock Dam SW	-3,834	1,500	17,666	18%
Butte TA Allocation	-2,334	1,500	19,166	11%
Yuba Accord	-1,830	504	19,670	9%
Dry Year Purchase Prog.	-1,330	500	20,170	6%
MYWP	-830	500	20,670	4%
additional PWD GW (a)	670	1500	22,170	-3%
New exchange Water	690	20	22,190	-3%
Butte	690	0	22,190	-3%
	690	0	22,190	-3%

15% with 1500 MYTP & 2500 LRD

21,500 AF Needed Absent Conservation				Conservation % Required With Each Component
RESOURCE COMPONENT	SHORTAGE	ACRE FEET	CUMULATIVE	
Groundwater	-11000	11,000	11,000	49%
SWP Table A @15%	-7330	3,195	14,195	34%
Banked Groundwater AV	-7,305	0	14,195	34%
Littlerock Dam SW	-4,805	2,500	16,695	22%
Butte TA Allocation	-3,305	1,500	18,195	15%
Yuba Accord	-2,801	504	18,699	13%
Dry Year Purchase Prog.	-2,301	500	19,199	11%
MYWP	-801	1500	20,699	4%
additional PWD GW (b)	199	1000	21,699	-1%
New exchange Water	199	0	21,699	-1%
?	199	0	21,699	-1%
Butte Additional	199	0	21,699	-1%

2015

MONTHLY TOTALS					
MONTH	TOTAL af	SW af	GW af	SW %	GW%
January	980.4	0.0	980.4	0.00%	100.00%
February	0.0	0.0	0.0	0.00%	0.00%
March	0.0	0.0	0.0	0.00%	0.00%
April	0.0	0.0	0.0	0.00%	0.00%
May	0.0	0.0	0.0	0.00%	0.00%
June	0.0	0.0	0.0	0.00%	0.00%
July	0.0	0.0	0.0	0.00%	0.00%
August	0.0	0.0	0.0	0.00%	0.00%
September	0.0	0.0	0.0	0.00%	0.00%
October	0.0	0.0	0.0	0.00%	0.00%
November	0.0	0.0	0.0	0.00%	0.00%
December	0.0	0.0	0.0	0.00%	0.00%

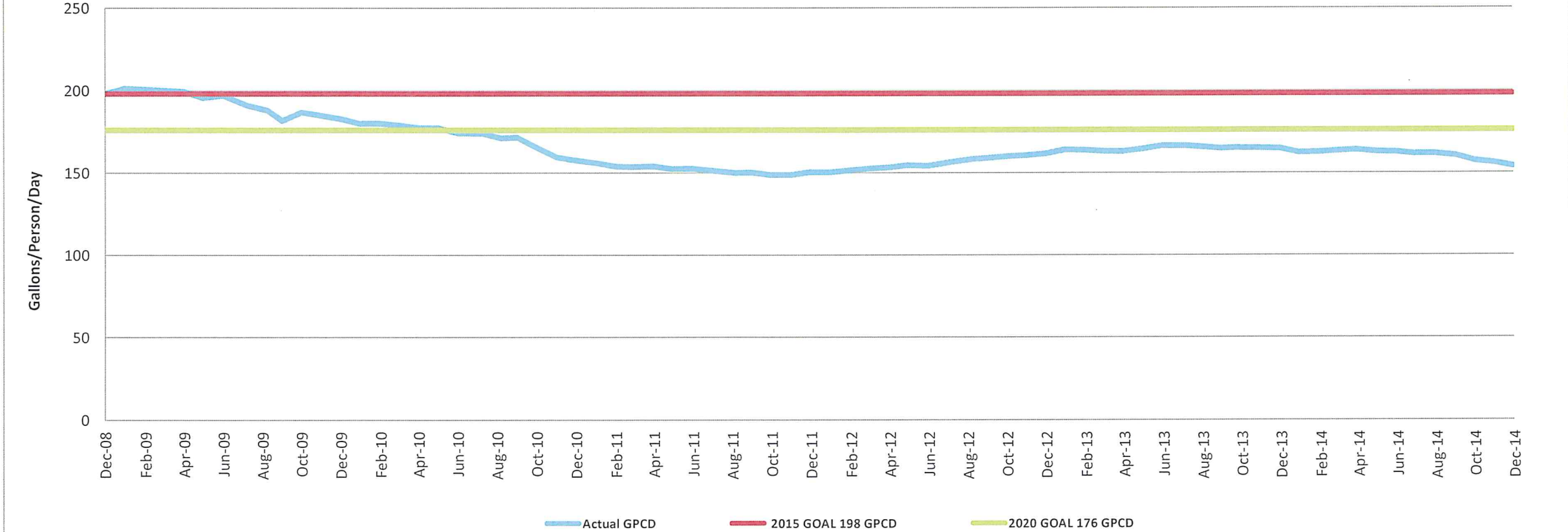
Running Averages	SW	GW
January	0.00%	100.00%
Jan. thru February	0.00%	0.00%
Jan. thru March	0.00%	0.00%
Jan. thru April	0.00%	0.00%
Jan. thru May	0.00%	0.00%
Jan. thru June	0.00%	0.00%
Jan. thru July	0.00%	0.00%
Jan. thru August	0.00%	0.00%
Jan. thru September	0.00%	0.00%
Jan. thru October	0.00%	0.00%
Jan. thru November	0.00%	0.00%
Jan. thru December	0.00%	0.00%

2015 SW GW Comparison by AF



Month	Raw Surface Water Sources								Water Production						Metered	
	Surface		Water		Evaporation		Total	WTP		Groundwater		Total		Water		
	YUBA ACCORD	AVWB (ac-ft)	BUTTE (ac-ft) fromTA *	DRY YR-MYWP (ac-ft)	PWD/SWP (ac-ft)	LrD (ac-ft)	Average (ac-ft)	Plan (ac-ft)	Plan (ac-ft)	Actual (ac-ft)	Plan (ac-ft)	Actual (ac-ft)	Plan (ac-ft)	Actual (ac-ft)	Plan (ac-ft)	Actual (ac-ft)
January	0.0	0.0	0.0	0.0	998.0	0.0	-9.00	989.00	0.0	0.0	1,000.0	980.4	1,000.0	980.4	1,000.0	865.0
February	0.0	0.0	0.0	0.0	400.0	0.0	0.00	400.00	350.0	0.0	625.0	0.0	975.0	975.0	1,050.0	0.0
March	0.0	0.0	0.0	0.0	0.0	422.0	-22.00	400.00	400.0	0.0	700.0	0.0	1,100.0	1,100.0	1,100.0	0.0
April	0.0	0.0	0.0	0.0	0.0	400.0	-170.00	230.00	0.0	0.0	1,100.0	0.0	1,100.0	1,100.0	1,200.0	0.0
May	0.0	0.0	0.0	0.0	832.0	0.0	-132.00	700.00	700.0	0.0	913.0	0.0	1,613.0	1,613.0	1,600.0	0.0
June	0.0	0.0	0.0	0.0	1395.0	0.0	-395.00	1000.00	1,000.0	0.0	1,000.0	0.0	2,000.0	2,000.0	2,000.0	0.0
July	0.0	0.0	0.0	0.0	153.0	1233.0	-136.00	1250.00	1,250.0	0.0	958.0	0.0	2,208.0	2,208.0	2,250.0	0.0
August	0.0	150.0	500.0	350.0	0.0	435.0	-135.00	1300.00	1,300.0	0.0	924.0	0.0	2,224.0	2,224.0	2,250.0	0.0
September	0.0	600.0	115.0	50.0	0.0	510.0	-125.00	1150.00	1,150.0	0.0	1,076.0	0.0	2,226.0	2,226.0	2,150.0	0.0
October	0.0	0.0	470.0	0.0	0.0	0.0	-70.00	400.00	800.0	0.0	1,130.0	0.0	1,930.0	1,930.0	2,000.0	0.0
November	116.0	0.0	415.0	54.0	0.0	0.0	-56.00	529.00	750.0	0.0	1,074.0	0.0	1,824.0	1,824.0	1,750.0	0.0
December	384.0	0.0	0.0	196.0	0.0	0.0	0.00	580.00	571.0	0.0	900.0	0.0	1,471.0	1,471.0	1,450.0	0.0
	500.0	750.0	1500.0	650.0	3778.0	3000.0	(1,250.00)	8,928.00	0.0	-	1,000.0	980.4	1,000.0	980.4	1,000.0	865
Allocated Total Use:	500	2,471.0	1,500.0	1,500.0	3,195.0	3,000.0	1,250.0	8,930.0	8,921.0	11,300.0	12,000.0	10,000.0	21,300.0	21,300.0	19,800.0	18,800.0
Actual Planned Use		0.0	1,500.0	1,500.0	0.0	0.0	-1,250.0	8,928.0					20,921.0			
Remaining Allotment:	0	1,721.0	0.0	850.0	-583.0	0.0	0.0	17,858.0	8,921.0	11,300.0	11,000.0	9,019.6	20,300.0	20,319.64	18,800.0	17,935.0
					3,778.0		0.0				-		-		-	-
Total:		0.0	0.0	2,500.0	0.0	0.0	-1,250.0									
UNUSED TO DATE	0.0	1,721.0	0.0	850.0	-583.0	0.0		267.0	0.0		1,000.0		1,000.0		1,000.0	
Planned Available for Carryover	267															

PWD 12-Month Running Average Per Capita Water Use

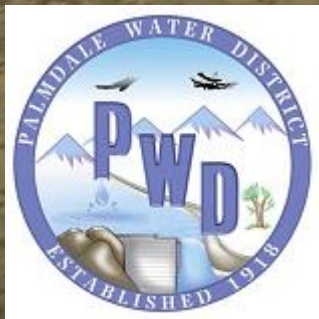


Kennedy/Jenks Consultants will be providing an overview of the preferred alternative for the Littlerock Creek Groundwater Recharge and Recovery Project and will also review the regional impacts and the partnership opportunities available for this project.

- Kennedy/Jenks Consultants presentation

Palmdale Water District Littlerock Creek Groundwater Recharge and Recovery Project Feasibility Study

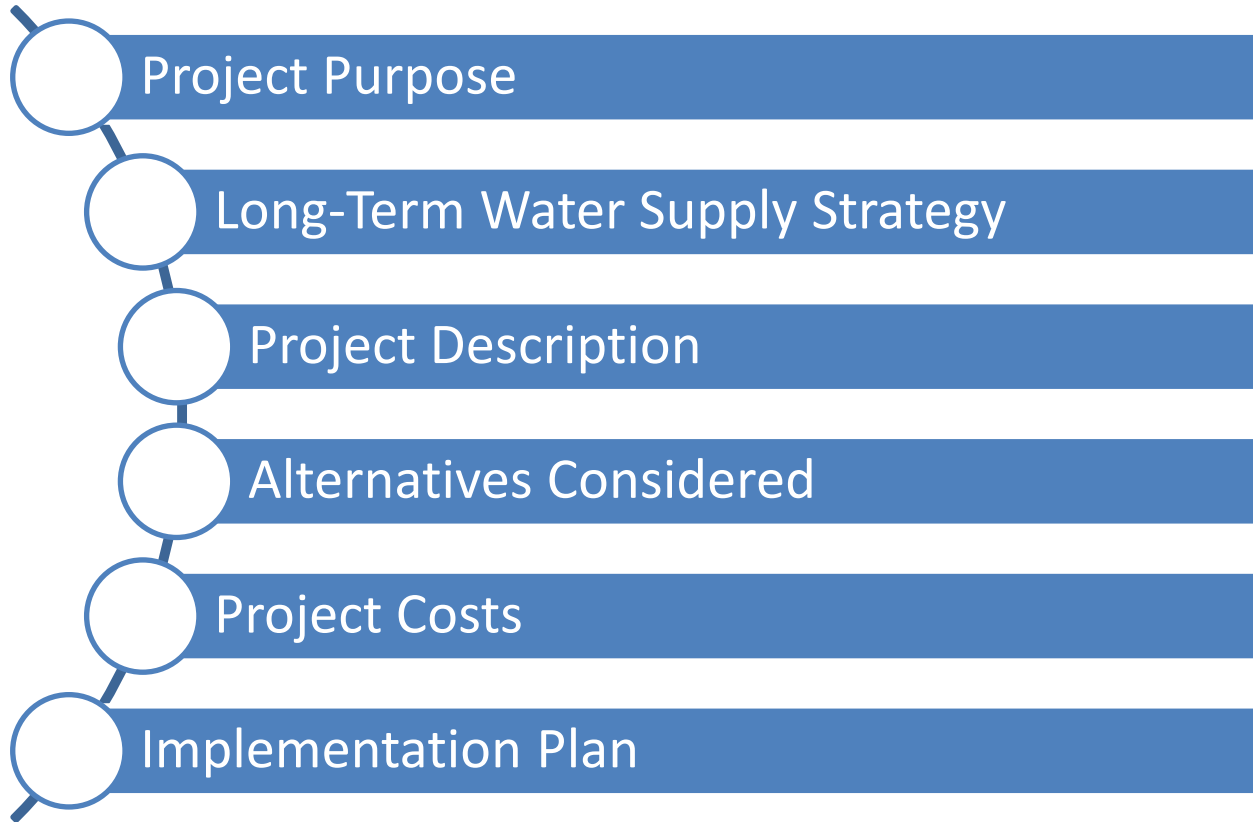
Project Summary



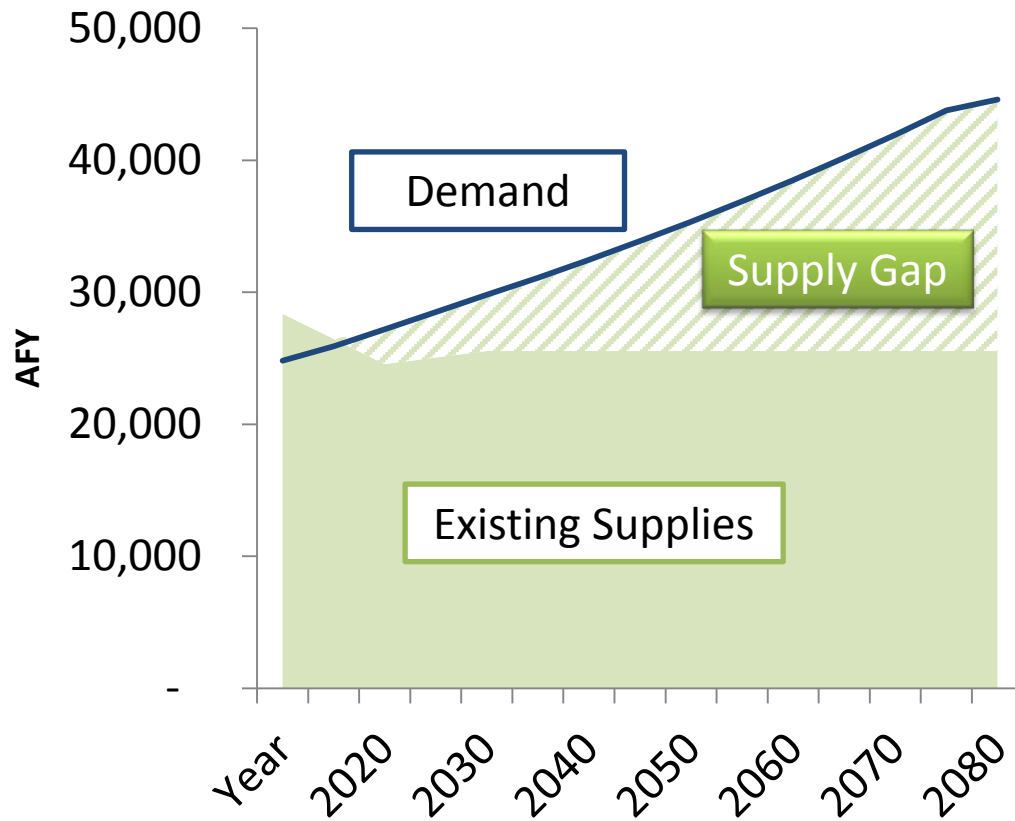
February 25, 2015

Kennedy/Jenks Consultants

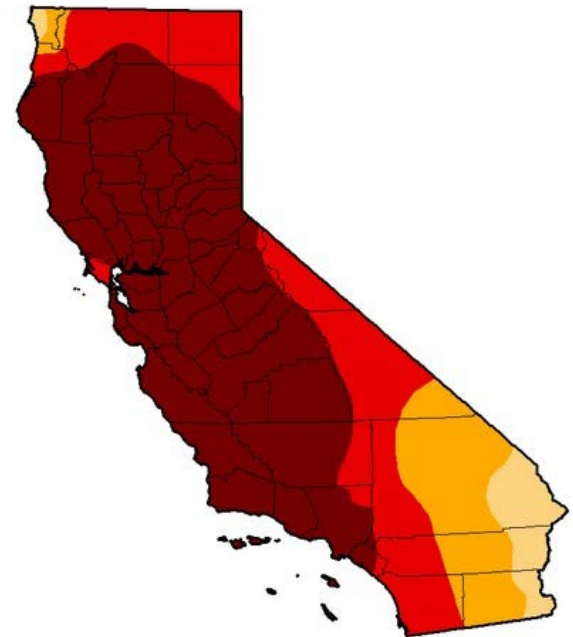
Presentation Agenda



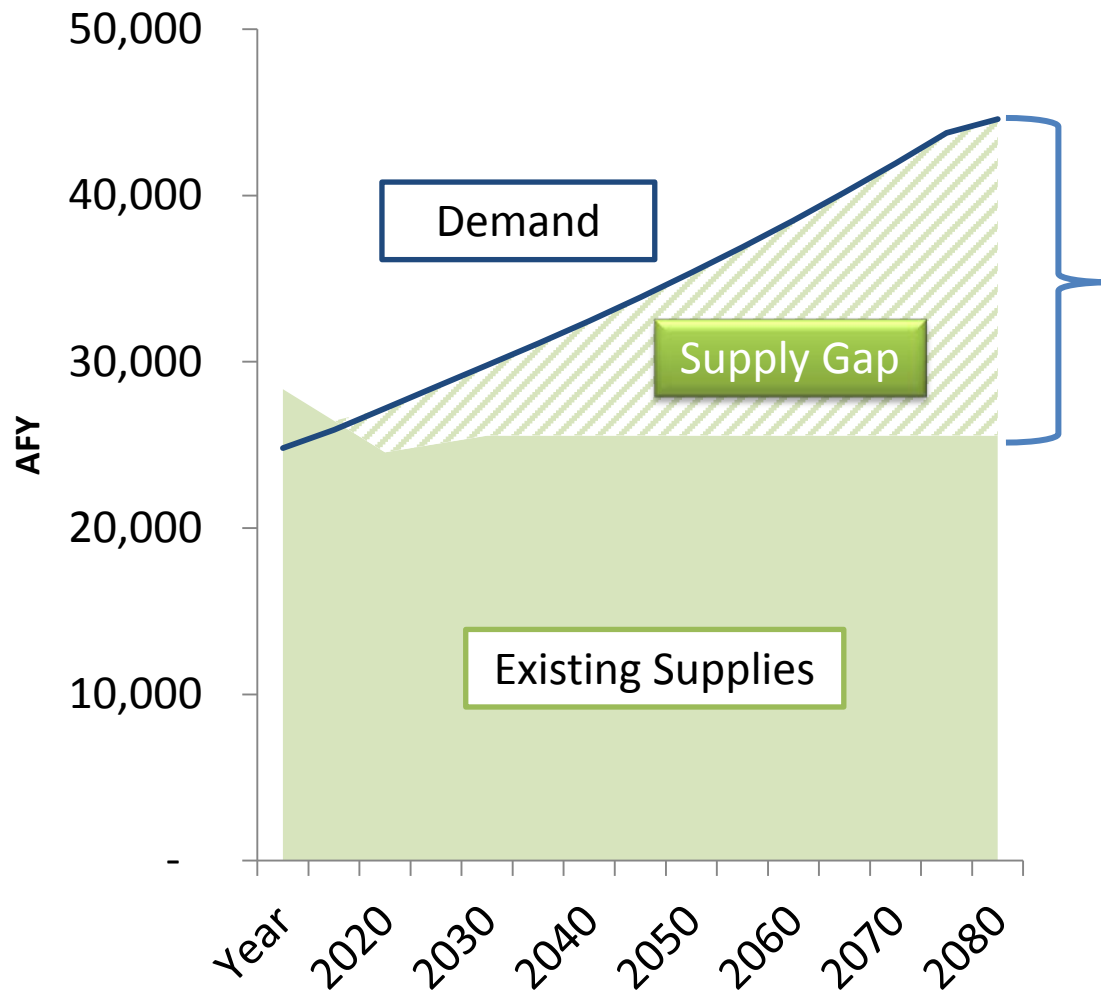
Project Purpose



U.S. Drought Monitor
California



Long-term Water Supply Strategy



Status Quo

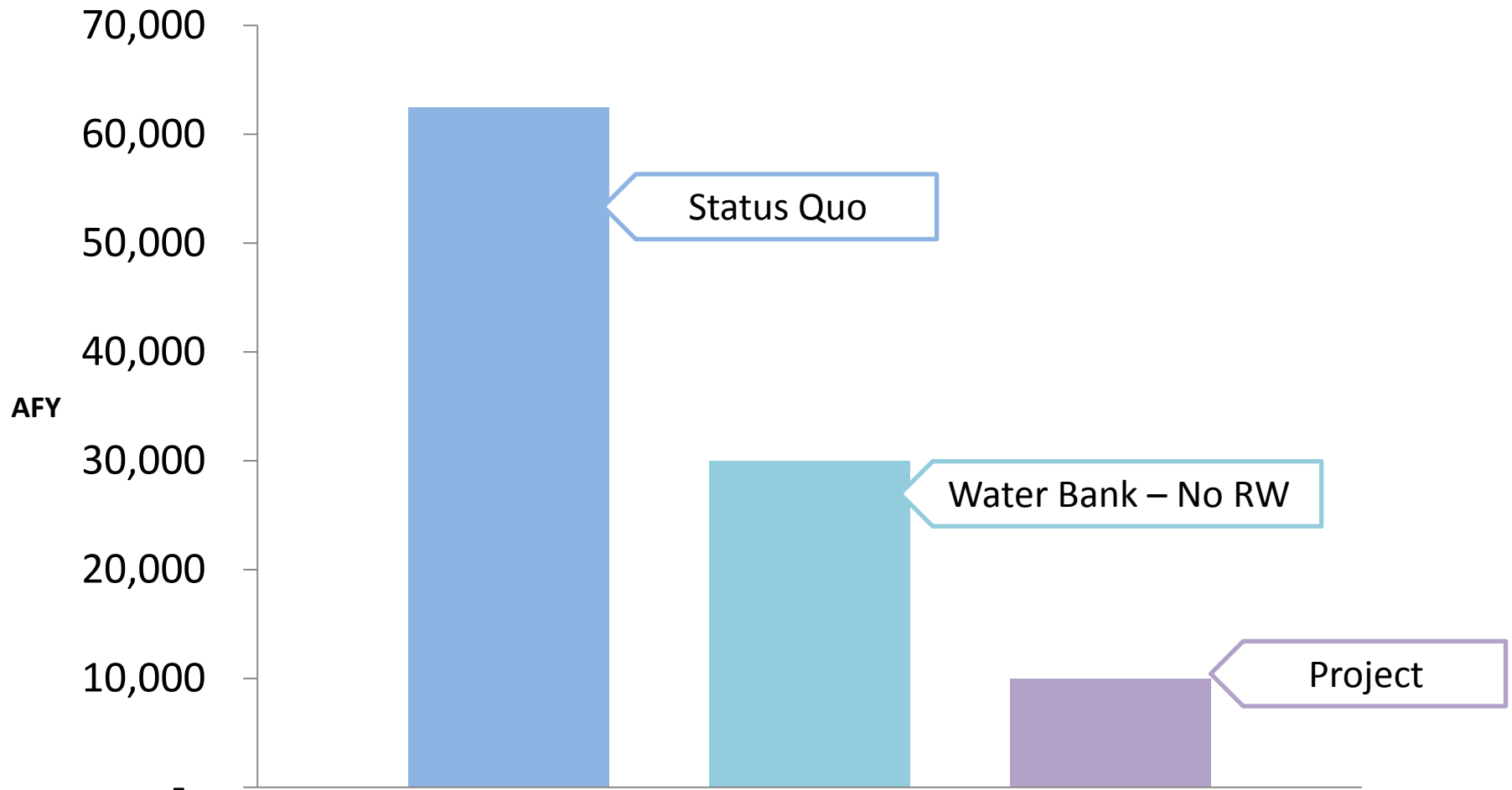


Project – No RW

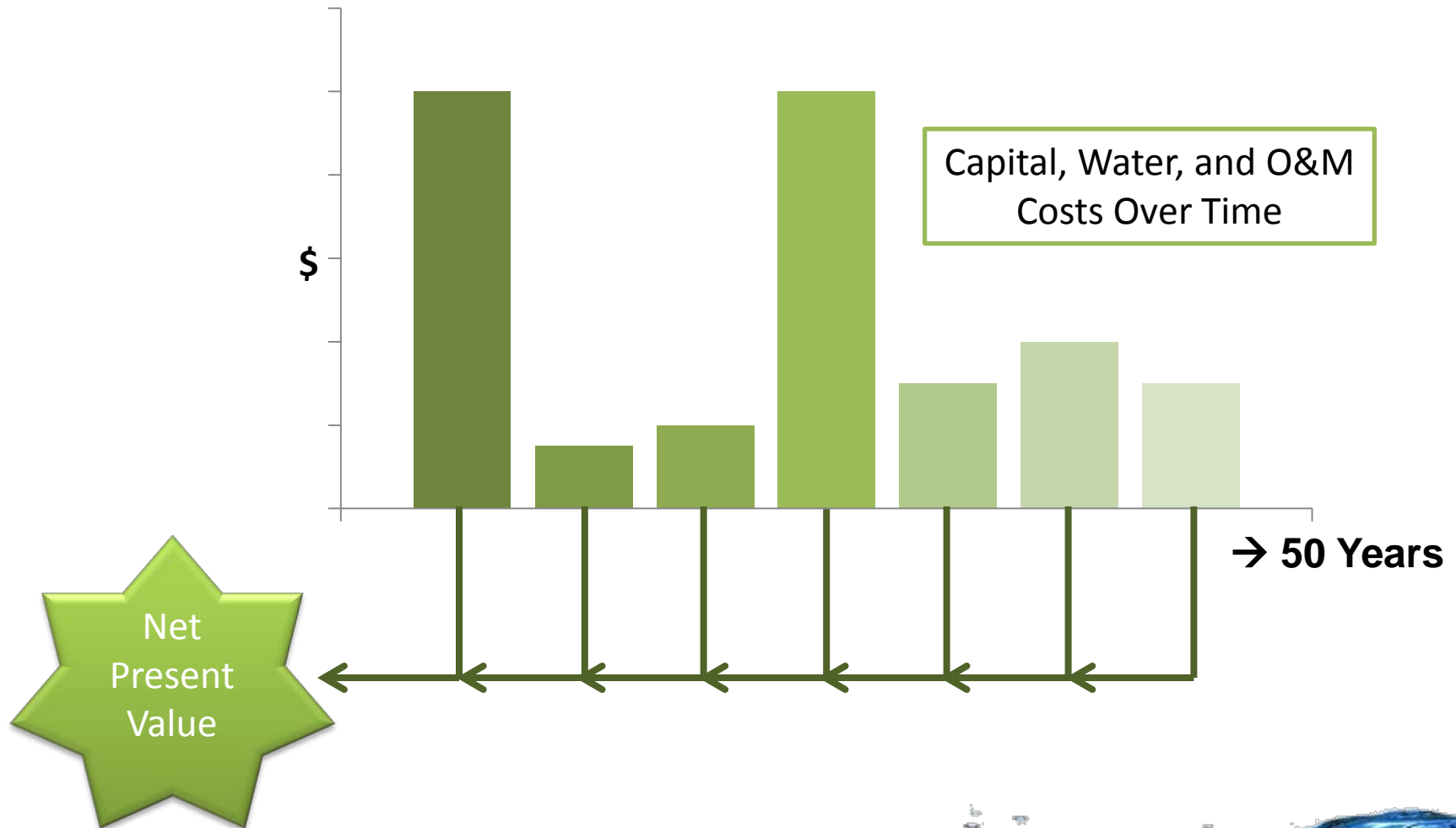


Project

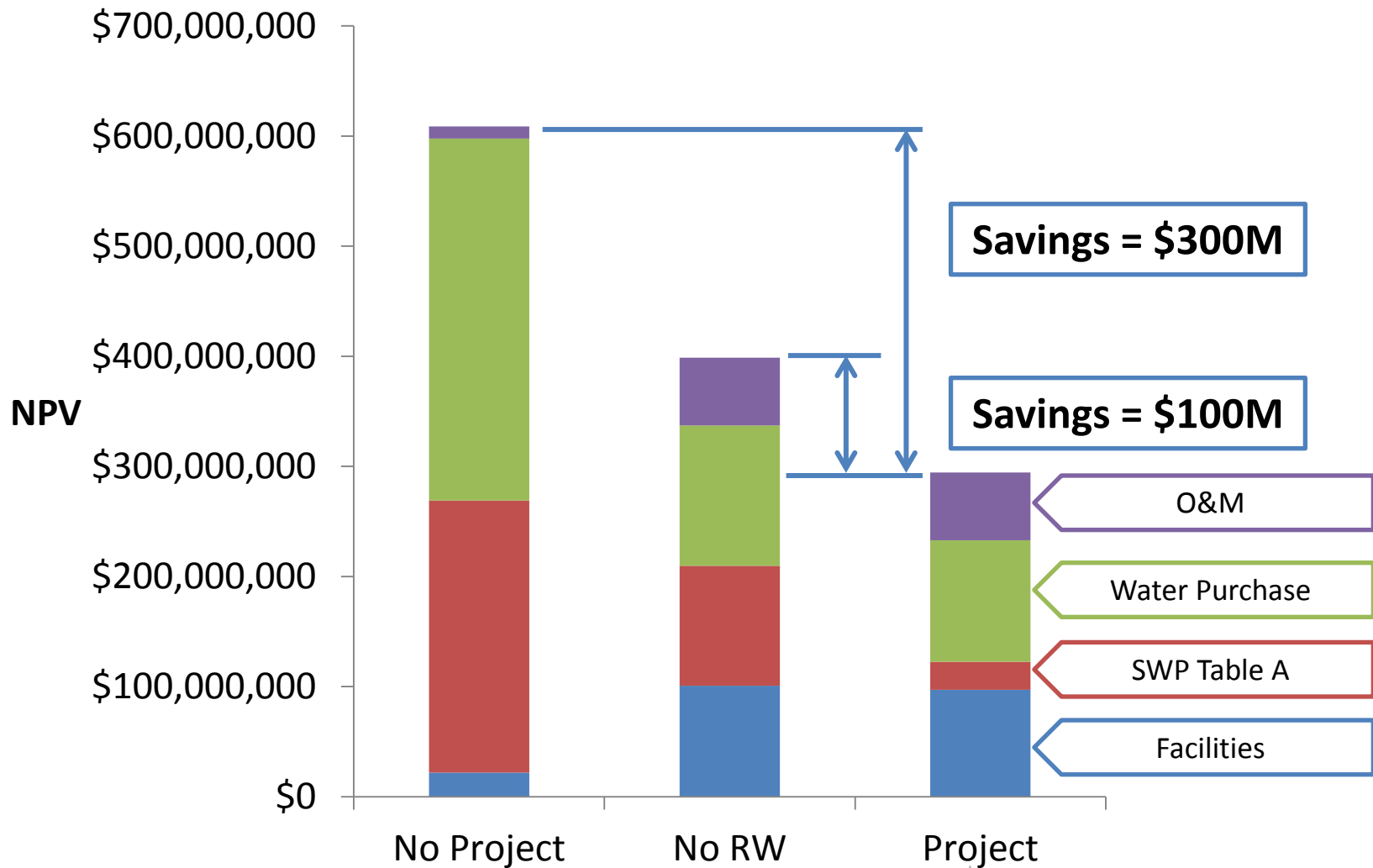
SWP Table A Purchases for 50 Years



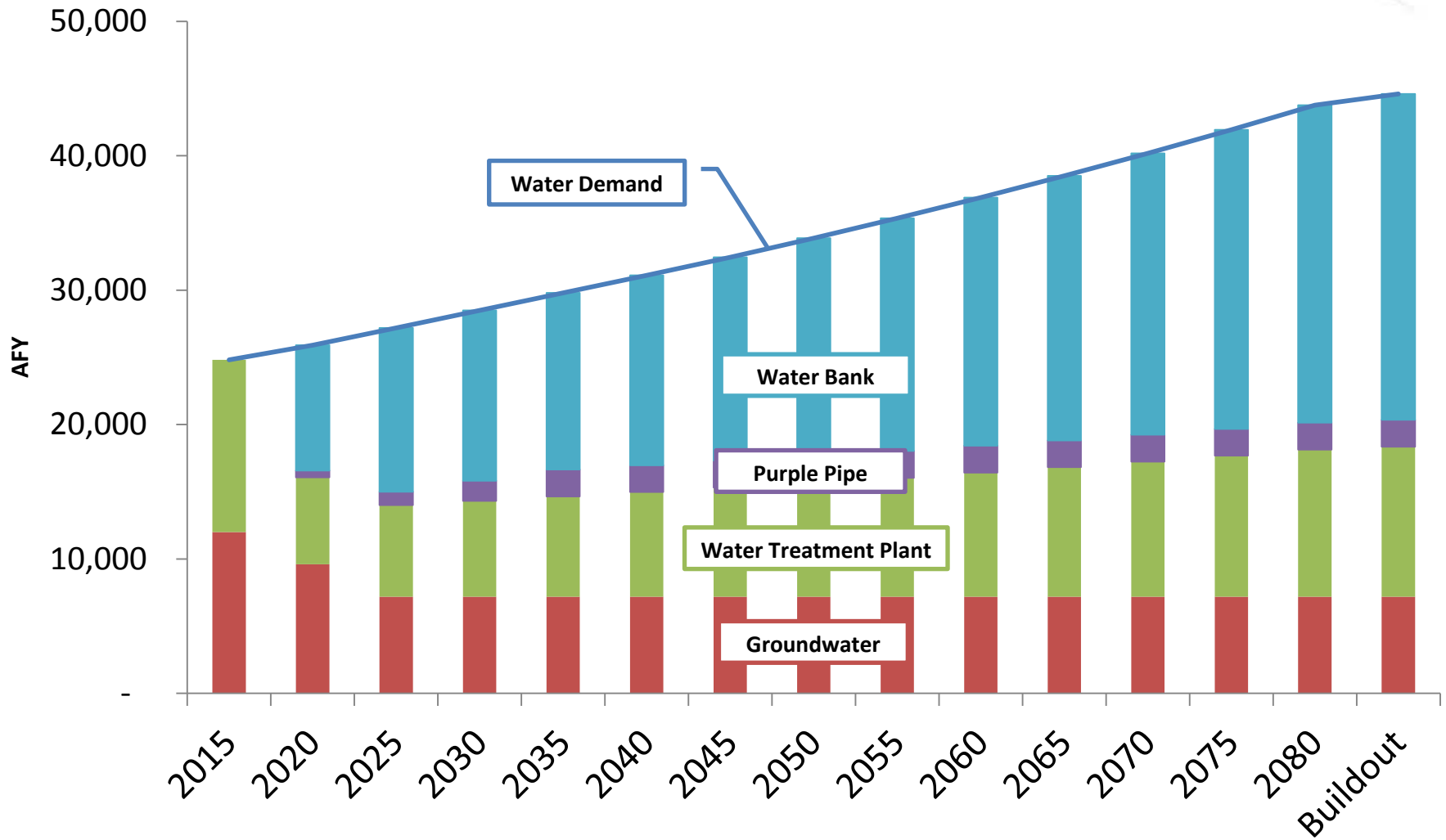
Net Present Value



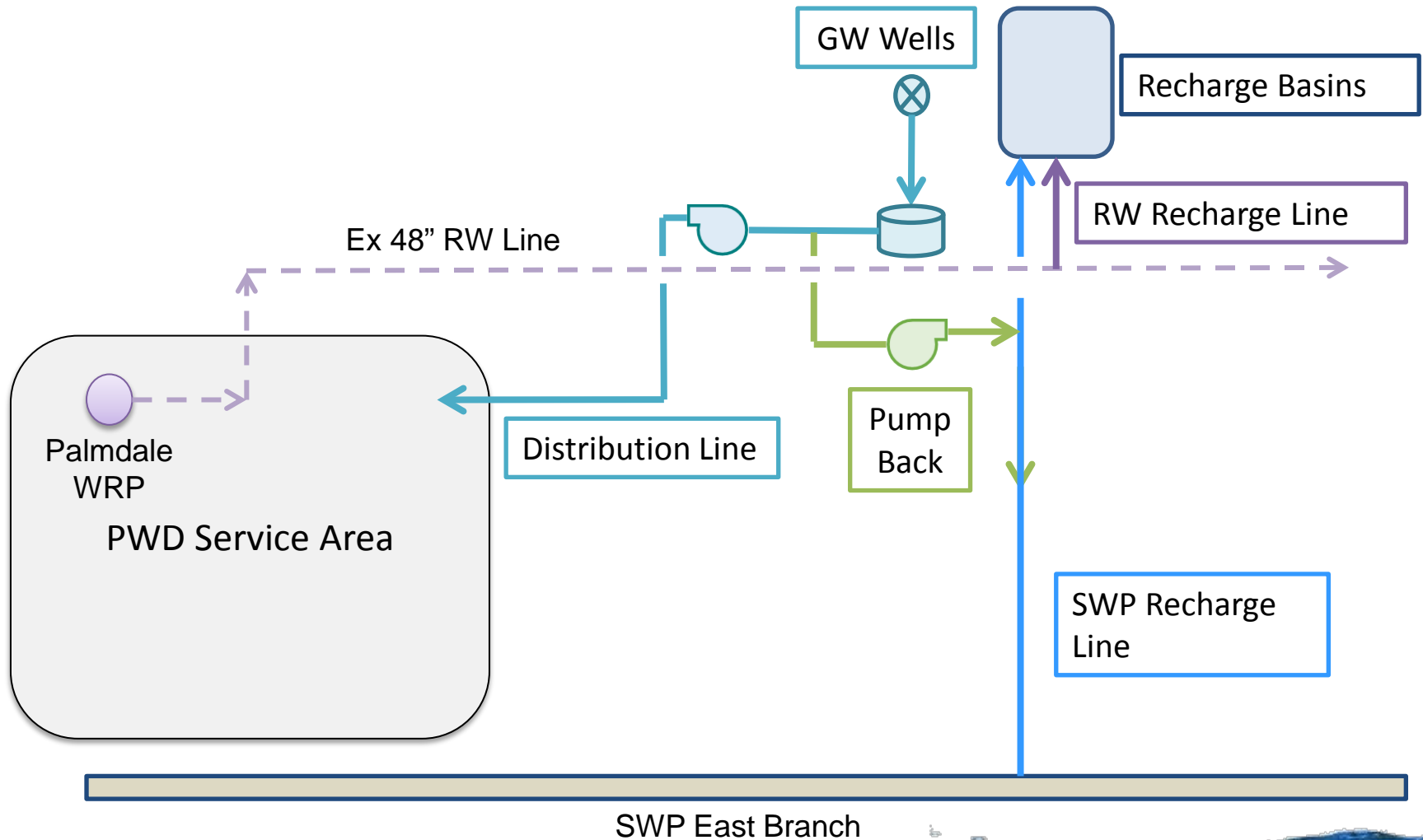
Cost Savings



Water Supply Projection



Project Schematic



Facility Sizes



30" SWP
Line



36" SWP &
RW Line



60 acres
Recharge
Basins



1,200 gpm
Wells



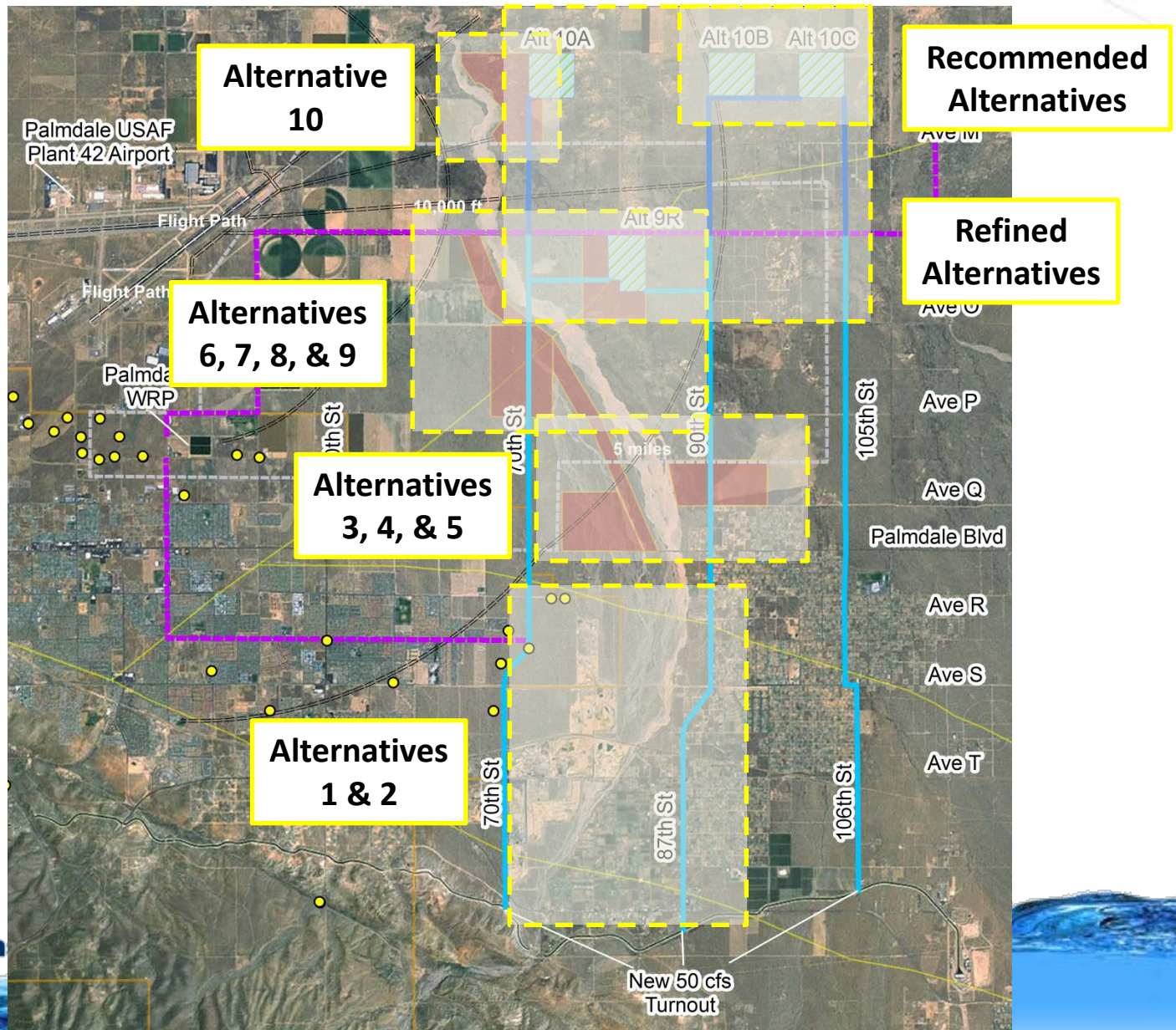
1,600 hp
Pump
Station



30"
Distribution
Line



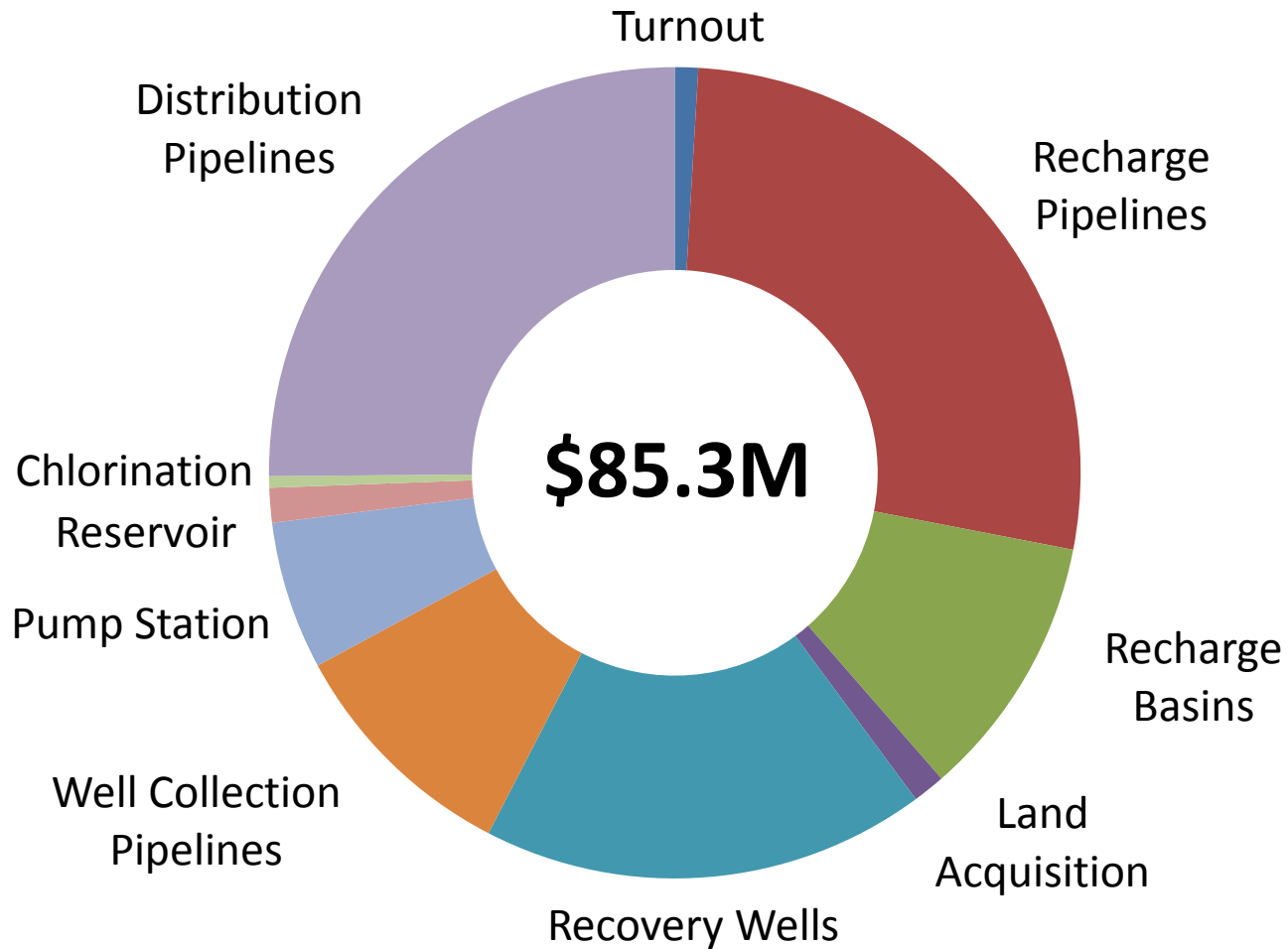
Project Alternatives



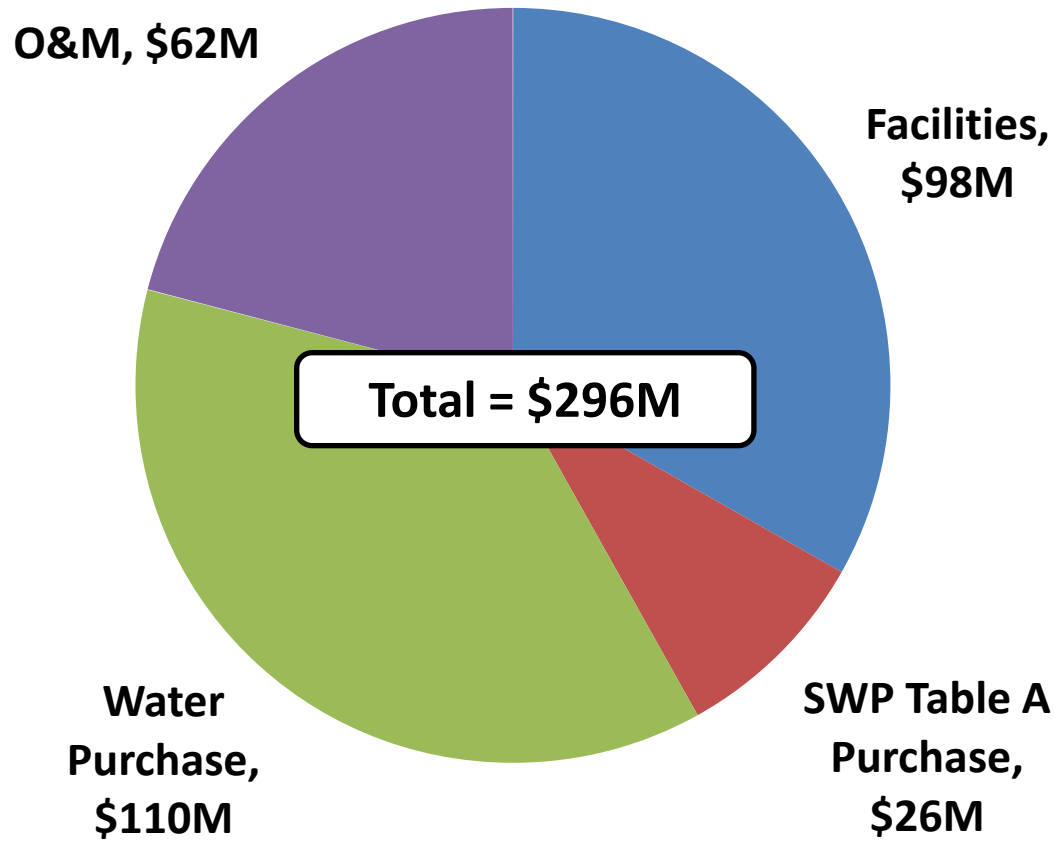
Project Life Cycle



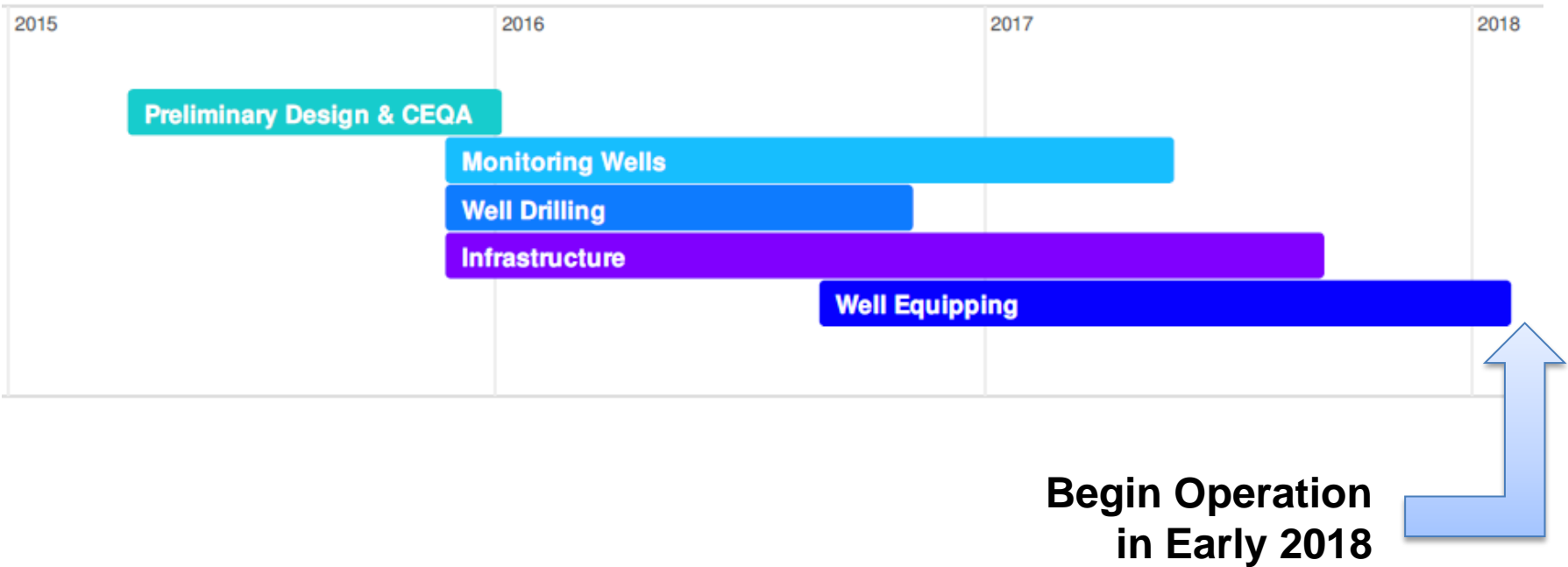
Initial Capital Investment



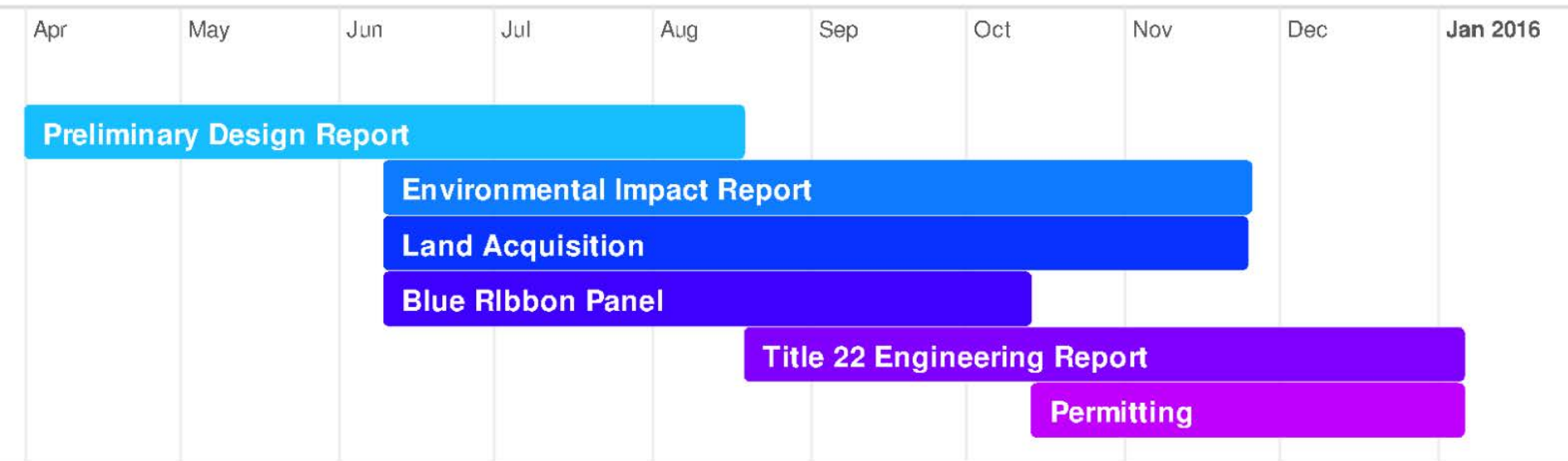
Long-term Water Investment



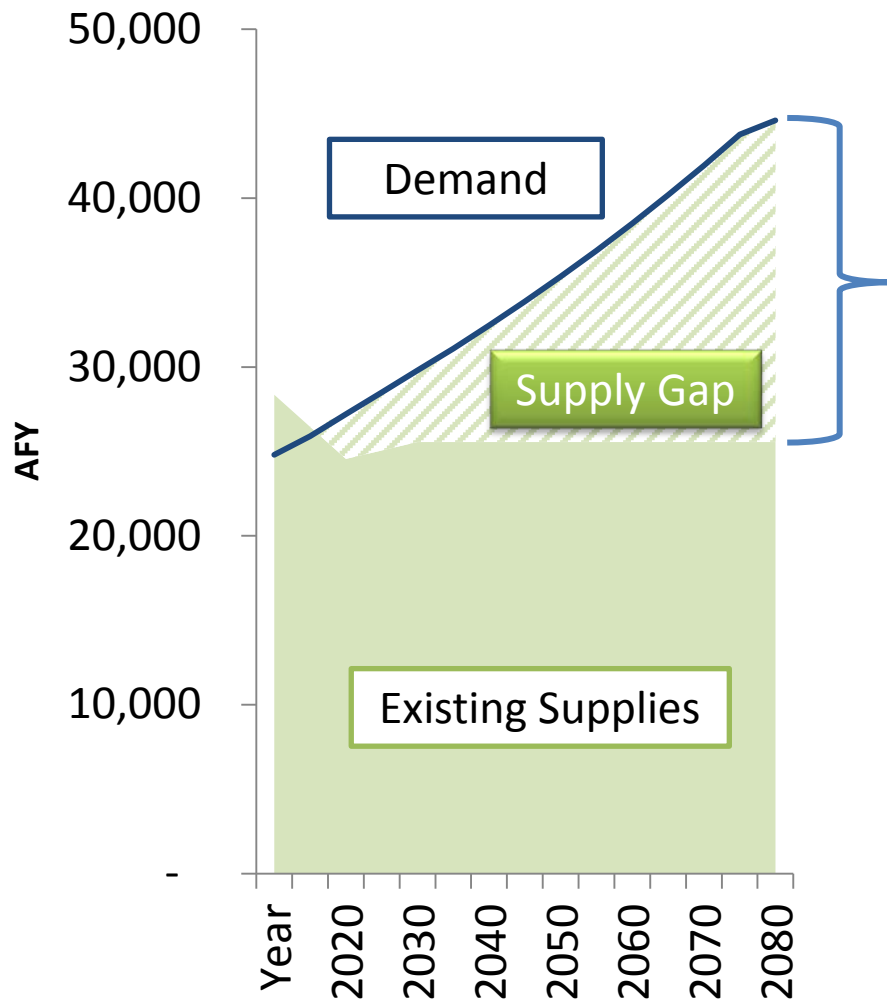
3-Year Implementation Plan



1-Year Work Plan



Project Recommendations



IPR Groundwater
Recharge & Recovery



Alternative 10B or 10C



Proceed with
Preliminary Design &
CEQA

Project Benefits



Most Cost-Effective Long-Term Water Supply Strategy



Utilization of Local Water Supply



Increased Reliability

An aerial photograph of a large industrial facility, possibly a water treatment plant or a large-scale solar farm, situated in a vast, arid desert landscape. The facility consists of several large, rectangular basins or panels, some of which are filled with a dark blue liquid, likely water. The surrounding terrain is flat and dry, with sparse vegetation and a few small trees. In the background, a range of mountains is visible under a sky filled with large, white clouds. The word "Questions?" is overlaid in white text on the central part of the image.

Questions?