

PALMDALE WATER DISTRICT

2029 East Avenue Q • Palmdale, California 93550 •

Telephone (661) 947-4111

Fax (661) 947-8604

www.palmdalewater.org

ALESHIRE & WYNDER LLP
Attorneys



Board of Directors

ROBERT E. ALVARADO
Division 1

JOE ESTES
Division 2

GLORIA DIZMANG
Division 3

KATHY MAC LAREN
Division 4

VINCENT DINO
Division 5

January 22, 2015

***Agenda for a Meeting
of the Water Supply & Reliability Committee of the Palmdale Water District
Committee Members: Gloria Dizmang-Chair, Vincent Dino
to be held at the District's office at 2029 East Avenue Q, Palmdale***

Monday, January 26, 2015

2:30 p.m.

NOTE: To comply with the Americans with Disabilities Act, to participate in any Board meeting please contact Dawn Deans at 661-947-4111 x1003 at least 48 hours prior to a Board meeting to inform us of your needs and to determine if accommodation is feasible.

Agenda item materials, as well as materials related to agenda items submitted after distribution of the agenda packets, are available for public review at the District's office located at 2029 East Avenue Q, Palmdale. Please call Dawn Deans at 661-947-4111 x1003 for public review of materials.

PUBLIC COMMENT GUIDELINES: The prescribed time limit per speaker is three-minutes. Please refrain from public displays or outbursts such as unsolicited applause, comments, or cheering. Any disruptive activities that substantially interfere with the ability of the District to carry out its meeting will not be permitted and offenders will be requested to leave the meeting.

Each item on the agenda shall be deemed to include any appropriate motion, resolution, or ordinance to take action on any item.

- 1) Roll call.
- 2) Adoption of agenda.
- 3) Public comments.
- 4) Action Items: (The public shall have an opportunity to comment on any action item as each item is considered by the Committee prior to action being taken.)

- 4.1) Consideration and possible action on approval of minutes of meeting held November 24, 2014.
- 4.2) Presentation of monthly water demand and supply status. (Water & Energy Resources Director Pernula)
- 4.3) Status on the operations of the State Water Project. (Water & Energy Resources Director Pernula)
- 5) Project updates.
 - 5.1) Littlerock Dam Sediment Removal Project. (Assistant General Manager Knudson)
 - 5.2) Littlerock Creek Recharge and Recovery Project. (Assistant General Manager Knudson)
 - 5.3) Palmdale Recycled Water Authority. (General Manager LaMoreaux)
 - 5.4) City of Palmdale's Upper Amargosa Recharge Project. (Assistant General Manager Knudson)
- 6) Information items.
 - 6.1) Water purchase opportunities. (Water & Energy Resources Director Pernula)
 - 6.2) Other.
- 7) Board members' requests for future agenda items.
- 8) Adjournment.



DENNIS D. LaMOREAUX,
General Manager

DDL/dd

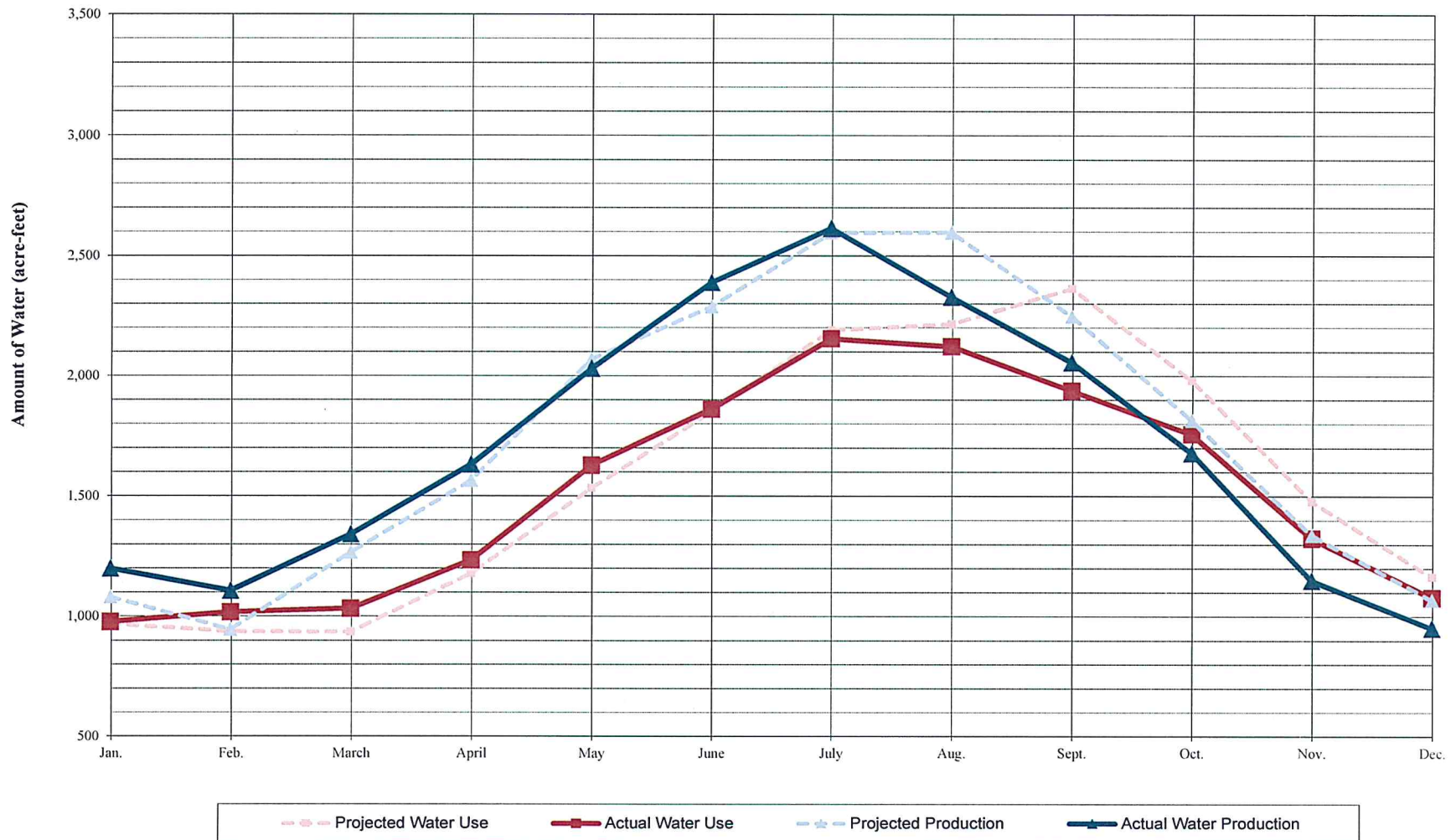
AGENDA ITEM NO. 4.2

Month	Five-Year Aver. Consumption	Budgeted 2014 Consumption	Actual 2014 Consumption	Difference (Act. - Pred.)
	(ac.-ft.)	(ac.-ft.)	(ac.-ft.)	(ac.-ft.)
Jan.	975.0	970	977.3	7.5
Feb.	943.3	938	1,017.0	78.8
March	941.0	936	1,032.5	96.5
April	1185.2	1,179	1,234.8	55.9
May	1541.8	1,534	1,627.2	93.7
June	1860.9	1,851	1,861.3	10.4
July	2201.1	2,189	2,154.1	(35.3)
Aug.	2226.6	2,215	2,122.4	(92.3)
Sept.	2376.2	2,363	1,937.8	(425.7)
Oct.	1990.7	1,980	1,757.3	(222.8)
Nov.	1487.1	1,479	1,325.9	(153.3)
Dec.	1172.2	1,166	1,079.5	(86.4)
	18,901	18,800	18,127.1	-673.1
	18,901	18,800		-3.6%

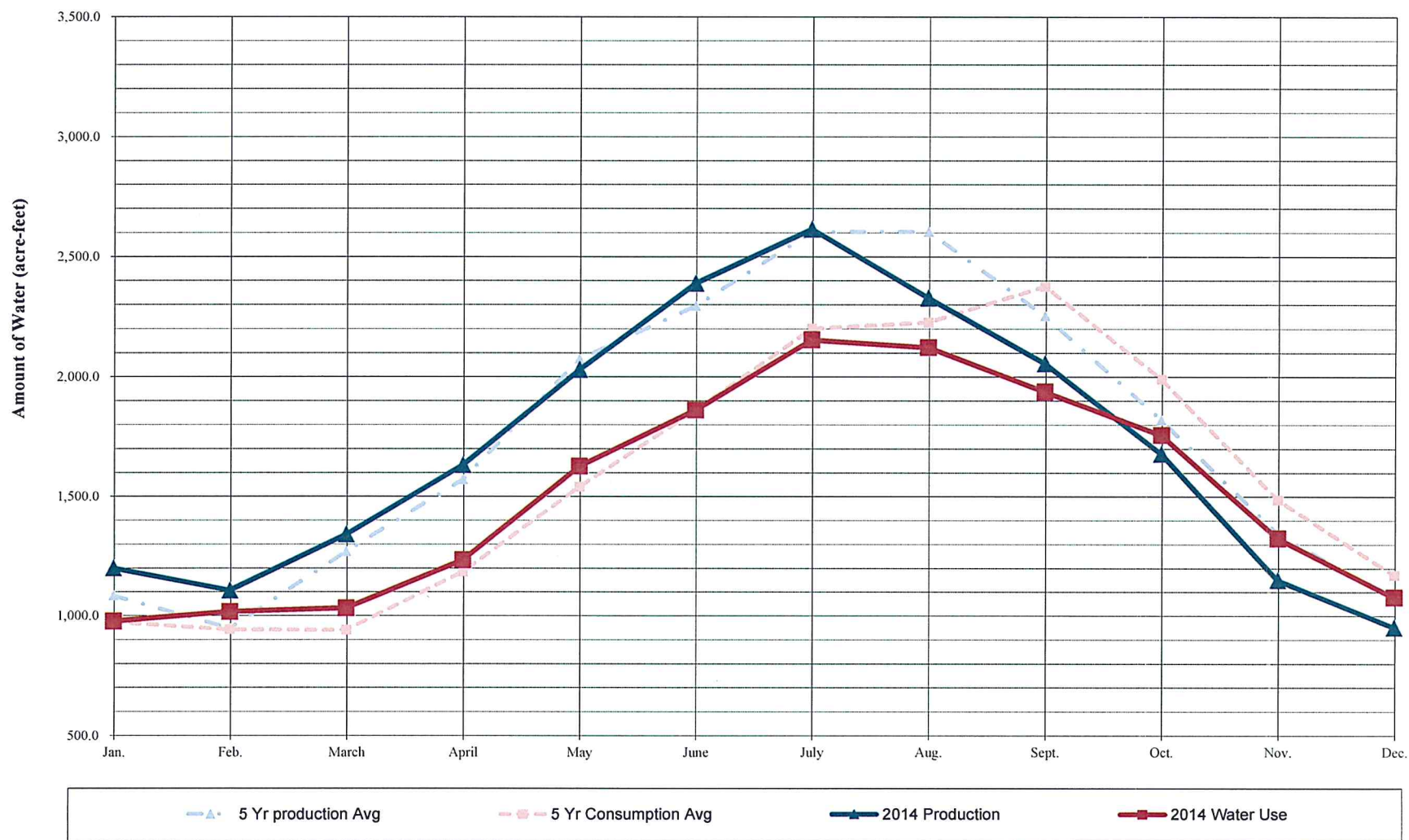
Month	Five-Year Aver. Production	Projected 2014 Production	Actual 2014 Production	Difference (Act. - Pred.)
	(ac.-ft.)	(ac.-ft.)	(ac.-ft.)	(ac.-ft.)
Jan.	1,084.2	1,081.2	1,199.8	118.6
Feb.	947.7	945.1	1,106.8	161.7
March	1,270.4	1,266.9	1,341.4	74.5
April	1,570.1	1,565.9	1,631.1	65.2
May	2,073.7	2,068.1	2,029.5	(38.6)
June	2,293.6	2,287.5	2,388.1	100.6
July	2,603.1	2,596.1	2,613.9	17.8
Aug.	2,603.8	2,596.7	2,327.3	(269.4)
Sept.	2,252.4	2,246.3	2,054.5	(191.8)
Oct.	1,819.8	1,814.9	1,677.6	(137.3)
Nov.	1,343.1	1,339.5	1,150.0	(189.5)
Dec.	1,072.8	1,069.9	951.7	(118.2)
	20,935	20,878	20,471.7	-406.5
	20,935	20,878		-1.9%

Month	5 yr avg 09 - 13		Amount over 5 yr avg	
	Production (ac.-ft.)	Consumption (ac.-ft.)	Production (ac.-ft.)	Consumption (ac.-ft.)
Jan.	1,084.2	975.0	115.6	2.3
Feb.	947.7	943.3	159.1	73.7
March	1,270.4	941.0	71.0	91.4
April	1,570.1	1,185.2	61.0	49.5
May	2,073.7	1,541.8	(44.2)	85.5
June	2,293.6	1,860.9	94.5	0.5
July	2,603.1	2,201.1	10.8	(47.0)
Aug.	2,603.8	2,226.6	(276.5)	(104.2)
Sept.	2,252.4	2,376.2	(197.9)	(438.4)
Oct.	1,819.8	1,990.7	(142.2)	(233.4)
Nov.	1,343.1	1,487.1	(193.1)	(161.2)
Dec.	1,072.8	1,172.2	(121.1)	(92.6)
Totals:	20,934.7	18,901.0	(463.1)	(773.9)

2014
PWD PRODUCTION & CUSTOMER WATER USE - Actual vs. Budgeted



2014 PWD PRODUCTION & CUSTOMER WATER USE - Actual vs. 5 Year Averages

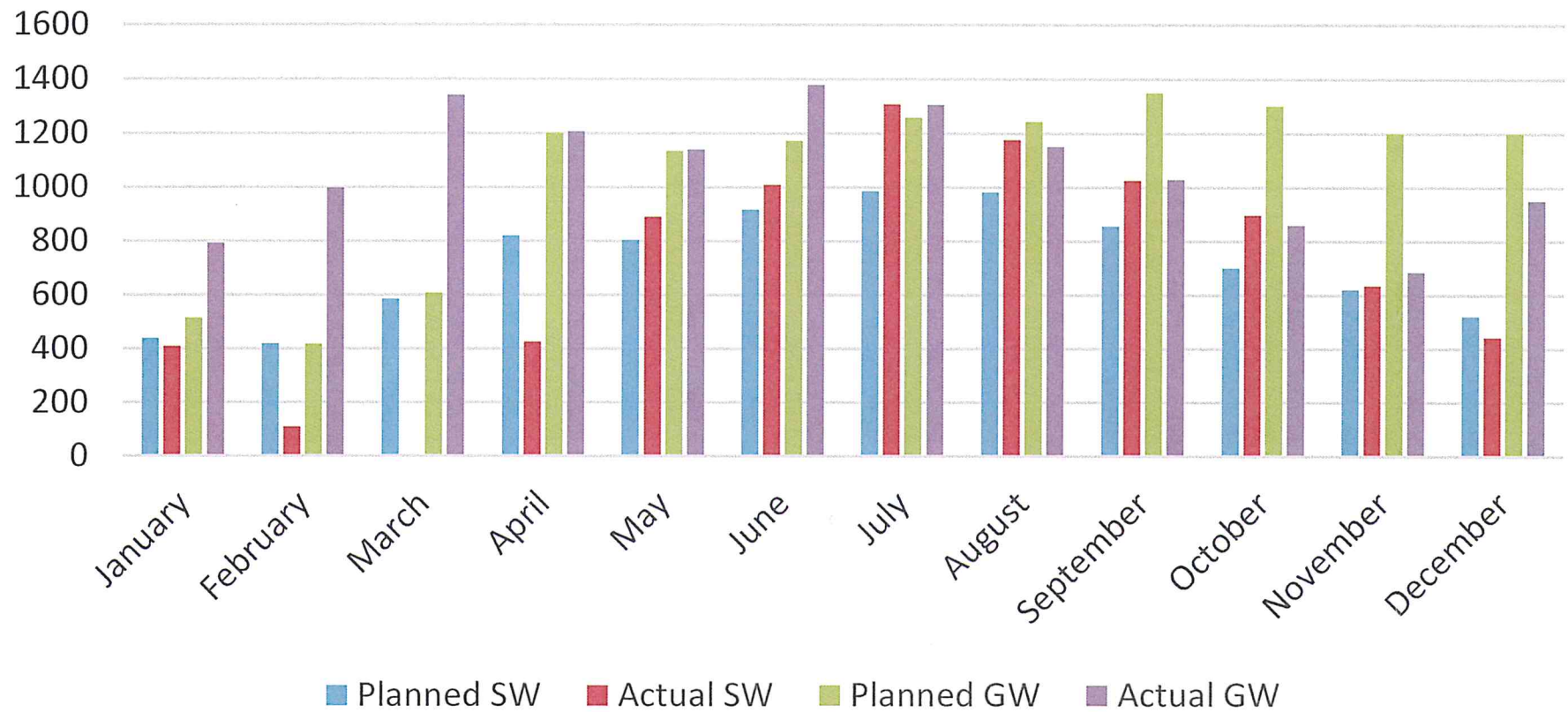


2014

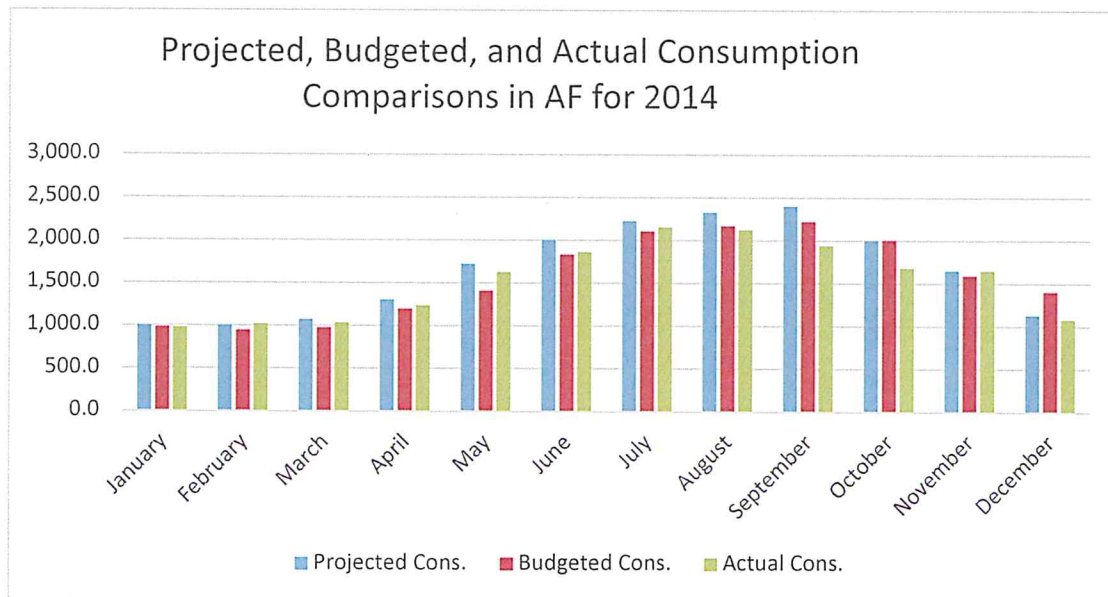
MONTHLY TOTALS					
MONTH	TOTAL af	SW af	GW af	SW %	GW%
January	1,199.8	408.3	791.5	34.03%	65.97%
February	1,106.8	108.7	998.1	9.82%	90.18%
March	1,300.0	0.0	1300.0	0.00%	100.00%
April	1,631.1	424.9	1206.2	26.05%	73.95%
May	2,029.5	888.9	1140.6	43.80%	56.20%
June	2,388.1	1008.8	1379.3	42.24%	57.76%
July	2,613.9	1307.4	1306.5	50.02%	49.98%
August	2,327.2	1176.3	1150.9	50.55%	49.45%
September	2,054.5	1024.8	1029.7	49.88%	50.12%
October	1,757.3	896.2	859.2	51.00%	48.89%
November	1,319.3	634.4	684.9	48.09%	51.91%
December	1,394.3	442.6	951.7	31.74%	68.26%

Running Averages	SW	GW
January	34.03%	65.97%
Jan. thru February	21.93%	78.07%
Jan. thru March	14.62%	85.38%
Jan. thru April	17.48%	82.52%
Jan. thru May	22.74%	77.26%
Jan. thru June	25.99%	74.01%
Jan. thru July	29.42%	70.58%
Jan. thru August	32.06%	67.94%
Jan. thru September	34.04%	65.96%
Jan. thru October	35.74%	64.25%
Jan. thru November	36.86%	63.13%
Jan. thru December	36.43%	63.56%

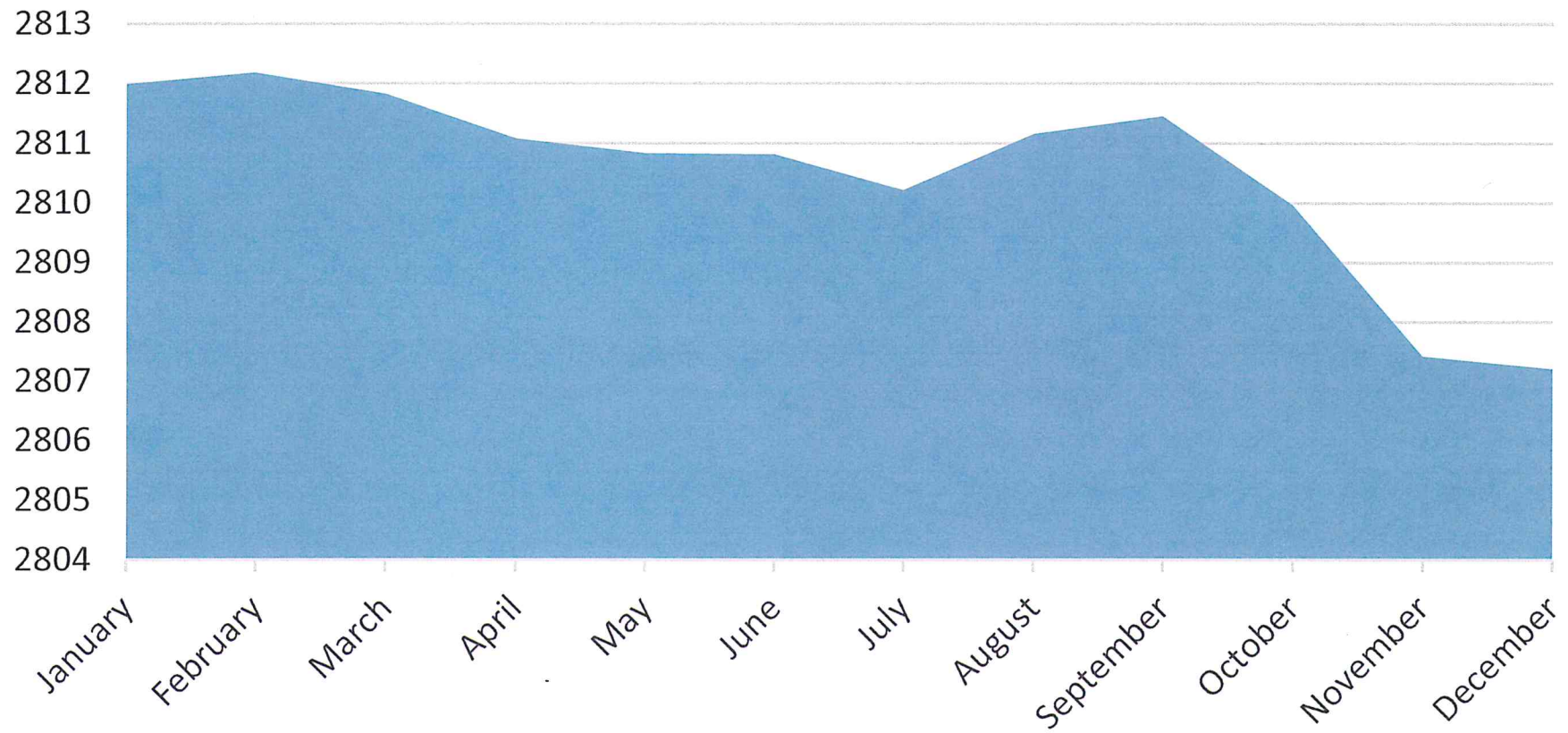
SW GW Comparison by AF



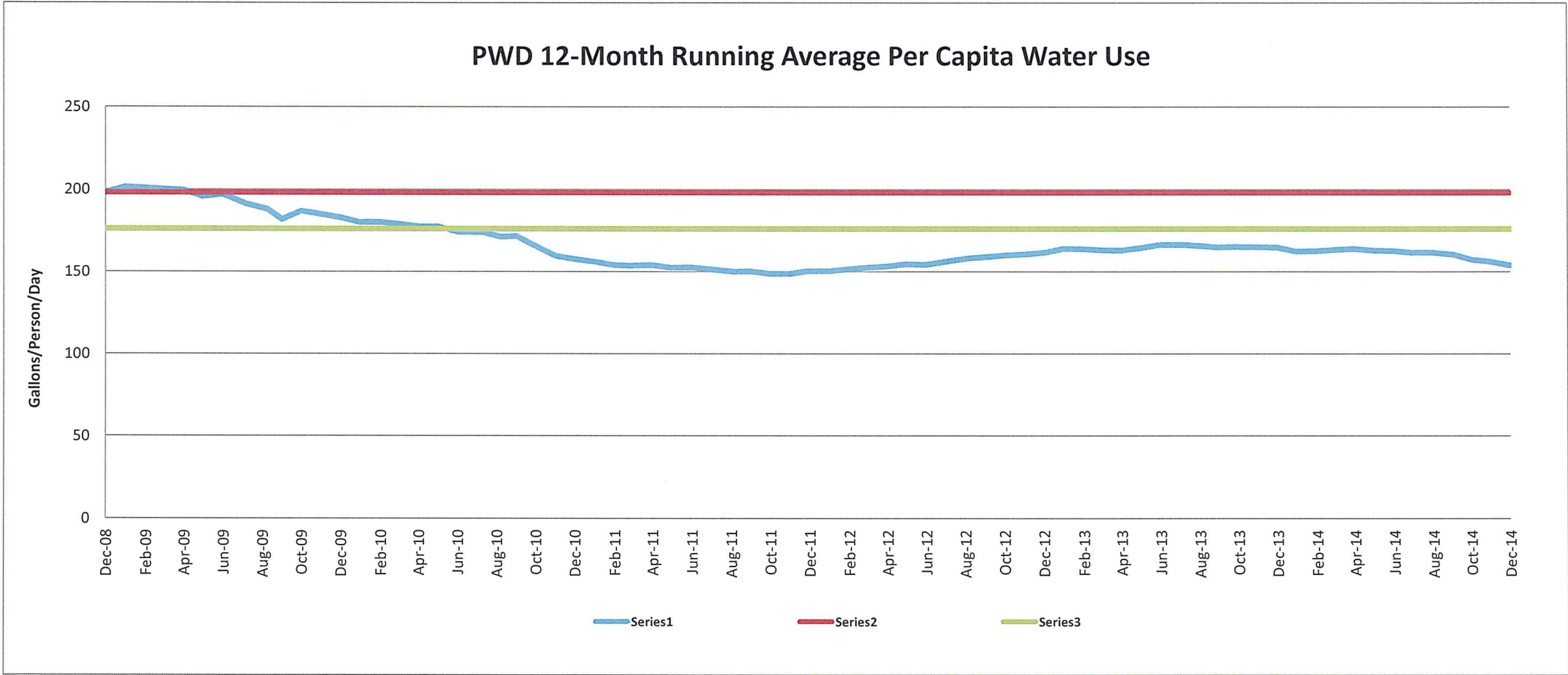
2014 BILLED CONSUMPTION				
Month	Projected	Budgeted	Actual	
January	1,000.0	979	977.3	
February	1,000.0	941	1,017.5	
March	1,070.0	970	1,032.5	
April	1,300.0	1,191.5	1,234.8	
May	1,720.0	1,405.0	1627.2	
June	2,000.0	1,830.7	1861.3	
July	2,225.0	2,104.6	2154.1	
August	2,325.0	2,165.7	2122.4	
September	2,400.0	2,219.2	1,937.8	
October	2,000.0	2,002.1	1677.6	
November	1,650.0	1,588.3	1,650.0	
December	1,130.0	1,402.5	1079.5	
Current AF	18,690.0	17,398	18,372.0	
Total	19,820.0	18,800	18,372.0	



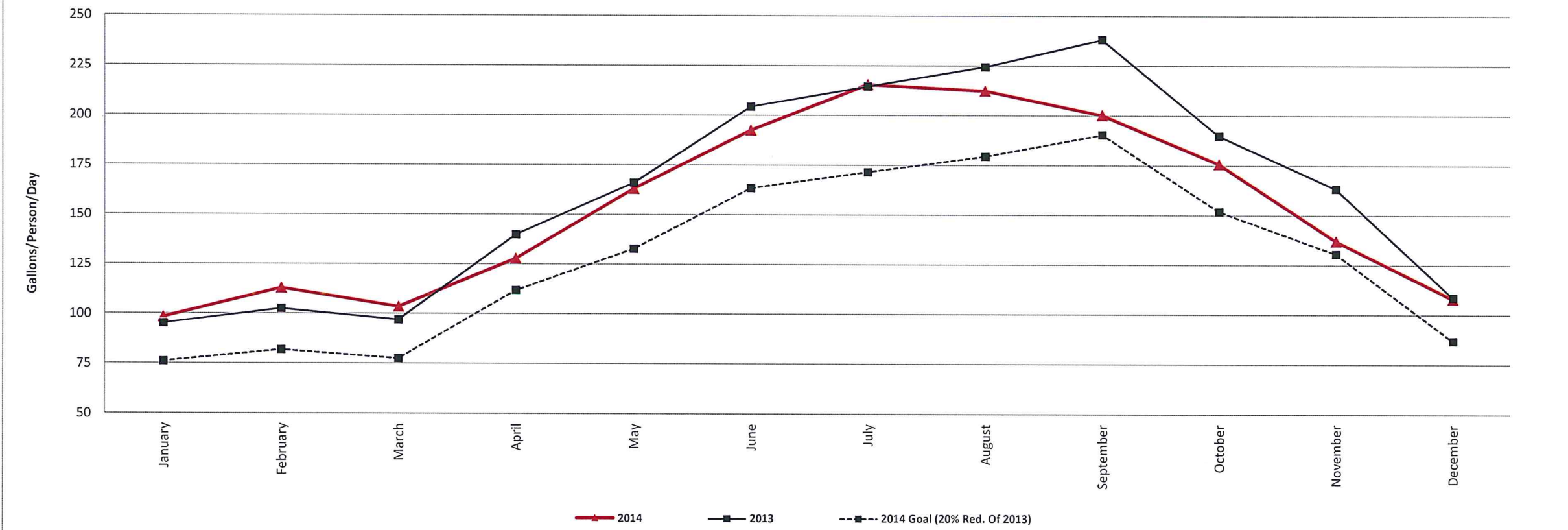
Lake Levels 2014



PWD 12-Month Running Average Per Capita Water Use



PWD 2014 Monthly Per Capita Water Use and Goal (20% Reduction from 2013)



2014 Water Production Plan @ 5% Allocation

	Raw Surface Water Sources								Water Production						Metered		
Month	Surface				Water		Evaporation		Total	WTP		Groundwater		Total		Water	
	YUBA ACCORD	Carry Over (ac-ft)	BUTTE (ac-ft) fromTA *	SBVWA MWA BCo (ac-ft)	PWD/SWP (ac-ft)	LrD (ac-ft)	Plan (ac-ft)	Plan (ac-ft)	Plan (ac-ft)	Actual (ac-ft)	Plan (ac-ft)	Actual (ac-ft)	Plan (ac-ft)	Actual (ac-ft)	Plan (ac-ft)	Actual (ac-ft)	
January	0	1326.0	0.0	0.0	0.0	0.0	0.00	1326.00	438	408.3	513.1	791.5	951.1	1,199.8	1,000.0	977.3	
February	0	153.0	0.0	0.0	0.0	0.0	0.00	153.00	418	108.7	416.3	998.1	834.3	1,106.8	1,000.0	1,017.5	
March	0	0	0.0	0.0	0.0	0.0	-80.00	-80.00	584	0.0	607.0	1341.4	1,191.0	1,341.4	1,070.0	1,032.5	
April	0	351.9	0.0	0.0	0.0	0.0	-100.00	251.90	820	424.9	1,200.0	1206.2	2,020.0	1,631.1	1,300.0	1,234.8	
May	0	1007.9	0.0	0.0	0.0	0.0	-176.00	831.90	804	888.9	1,135.0	1140.6	1,939.0	2,029.5	1,720.0	1,627.2	
June	0	800.0	0.0	0.0	295	67.0	-157.00	1005.00	916	1008.8	1,171.8	1379.3	2,087.8	2,388.1	2,000.0	1,861.3	
July	302.4	30.0	0.0	0.0	520.0	699.6	-80.00	1169.55	984	1307.4	1,258.0	1306.5	2,242.0	2,613.9	2,225.0	2,154.1	
August	232	0.0	0.0	908.9	250.0	0.0	0.00	1390.90	980	1176.3	1,242.0	1150.9	2,450.0	2,327.2	2,325.0	2,122.4	
September	0	0.0	0.0	1093.4	0.0	0.0	0.00	1093.40	856	1024.8	1,350.0	1029.7	2,206.0	2,054.5	2,400.0	1,937.8	
October	0	0.0	55.6	498.0	0.0	0.0	0.00	553.60	700	896.2	1,300.0	859.2	2,000.0	1,757.3	2,000.0	1,677.6	
November	0	0.0	199.4	0.0	0.0	0.0	-148.00	51.40	620	634.4	1,200.0	684.9	1,820.0	1,319.3	1,650.0	1,325.9	
December	0	0.0	393.8	0.0	0.0	0.0	0.00	393.80	520	442.6	1,200.0	951.7	1,720.0	1,394.3	1,130.0	1,079.5	
	534.4	3,668.80	648.8	2500.3	1,065.0	766.6	(741.00)	8,140.45	8,640.0	8,321.3	10,193.2	11,203.42	17,921.2	21,163.3	19,820.0	18,048	
Allocated Total Use:	534	3,670.0	570.0	2,500.0	1,062.0	1,000.0	1,250.0	8,500.0	8,640.0	8,500.0	12,593.2	12,500.00	21,461.2	21,500.00	18,800.0	18,900.0	
Actual Planned Use		3,670.0	570.0	2,002.3	1,100.0	750.0		8,140.5									
Remaining Allotment:	-0.4	1.2	-78.8	-0.3	-3.0	233.5	509.0	359.6	0.00	178.7	2,400.0	1,296.58	3,540.0	336.73	-1,020.0	852.1	
recoverable AVWB			570.0		1,065.0		0.0		12,300.0		9,500.0		21,780.0	-	18,000.0	19,258	
Total:		3,100.0	0.0	2,500.0	0.0	0.0	-1,250.0										
UNUSED TO DATE		1.2	0.0	-0.3	-3.0	0.0		-2.1					2,976.4		4,370.0		
Planned Available for Carryover									(2)								