



PALMDALE WATER DISTRICT
A CENTURY OF SERVICE

BOARD OF DIRECTORS

ROBERT E. ALVARADO
Division 1

DON WILSON
Division 2

MARCO HENRIQUEZ
Division 3

KATHY MAC LAREN
Division 4

VINCENT DINO
Division 5

POSTING DATE: March 27, 2019

***NOTICE OF VACANCY
OFFICE OF DIVISION 3 DIRECTOR
PALMDALE WATER DISTRICT
BOARD OF DIRECTORS***

AND

***INTENT TO APPOINT
DIVISION 3 DIRECTOR***

DENNIS D. LaMOREAUX
General Manager

ALESHIRE & WYNDER LLP
Attorneys

As of March 15, 2019, the position of Director for Palmdale Water District, Division 3, is vacant due to the resignation of Director Marco Henriquez. At the Regular Board Meeting held March 25, 2019, the remaining members of the Board of Directors chose to fill the vacancy by appointment in accordance with Government Code Section 1780. Therefore, an appointment may be made after this notice has been posted for fifteen (15) days.



Applicants for the Division 3 Director position must be registered voters and reside in Division 3 of the Palmdale Water District as shown on the attached map. Please submit a Division 3 Director Applicant Questionnaire to Mr. Vincent Dino, President of the Board of Directors, Palmdale Water District, 2029 East Avenue Q, Palmdale, CA, 93550 on or before April 15, 2019 to be considered for the position. The Division 3 Director Applicant Questionnaire is attached and is also available on the District's website at www.palmdalewater.org.

Please note that your completed Questionnaire (except for your phone number and email) will be included in the Board of Directors' agenda materials and will be a public record.

A special meeting of the Board of Directors to consider the appointment is scheduled for April 30, 2019 at 6:00 p.m.

DIVISION 3 DIRECTOR APPLICANT QUESTIONNAIRE

NAME: _____

ADDRESS: _____

TELEPHONE: _____ EMAIL: _____

Why are you interested and how does your background prepare you for the Division 3 Director position?

What is your vision for Palmdale Water District over the next five years?

Maintaining infrastructure is a major national and local issue. What are your ideas to ensure safe, reliable service to our customers?

How will you engage customers in the Palmdale Water District's activities?

Please disclose any potential conflicts?

Please disclose any relationships with Palmdale Water District staff?

Please disclose any involvement with current and/or pending litigation?

(attach additional sheets if necessary)

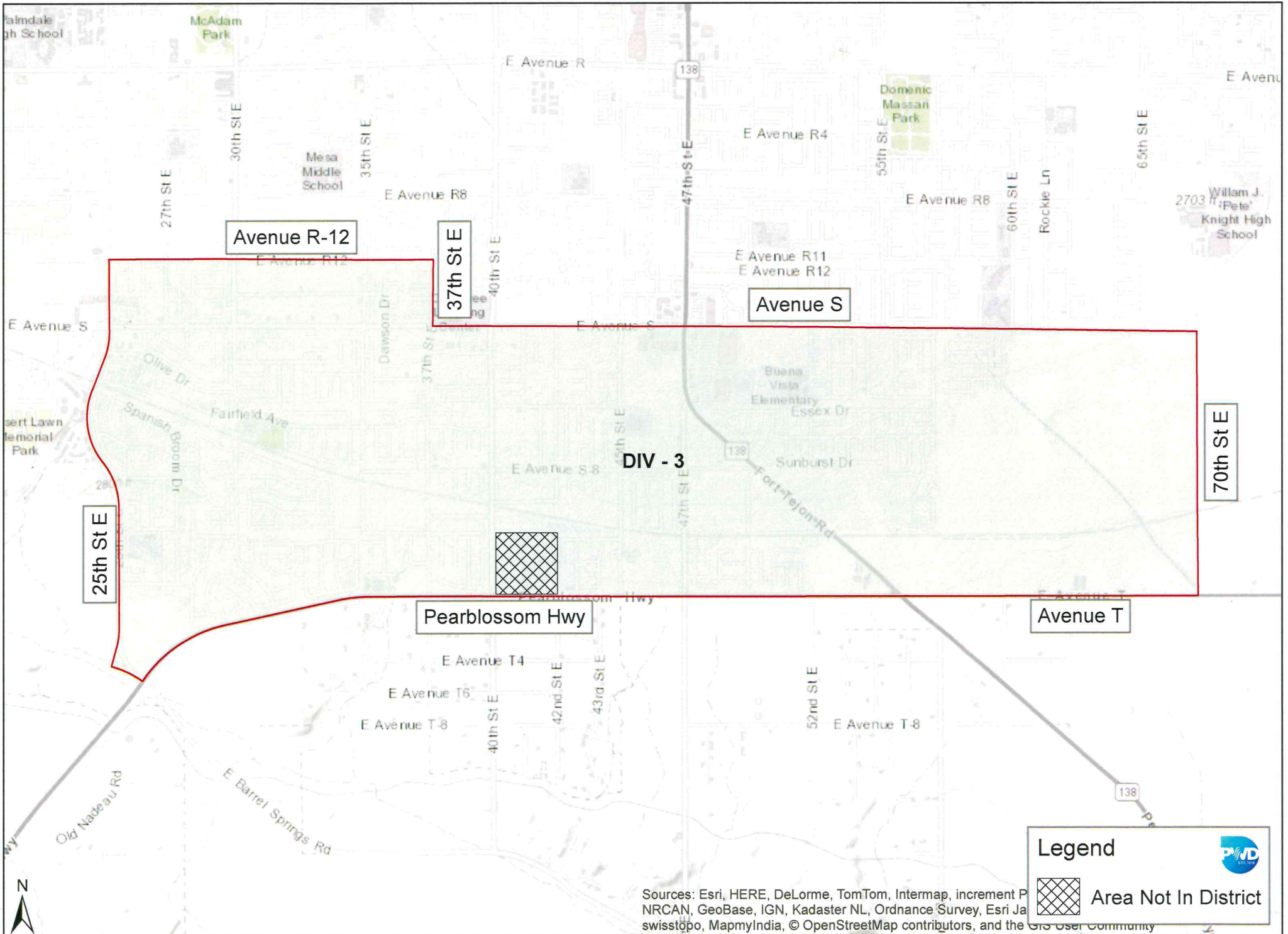
POSTED ON MARCH 26, 2019 AT THE FOLLOWING LOCATIONS:

PALMDALE WATER DISTRICT
2029 East Avenue Q
Palmdale, CA 93550

PALMDALE CITY LIBRARY
700 East Palmdale Blvd.
Palmdale, CA 93550

PALMDALE OASIS PARK AND RECREATION CENTER
3850 East Avenue S
Palmdale, CA 93550

PALMDALE WATER DISTRICT WEBSITE
www.palmdalewater.org



PALMDALE WATER DISTRICT DIVISION - 3 BOUNDARIES

Sources: Esri, HERE, DeLorme, TomTom, Intermap, increment P, NRCAN, GeoBase, IGN, Kadaster NL, Ordnance Survey, Esri Ja, swisstopo, MapmyIndia, © OpenStreetMap contributors, and the GIS User Community

Legend

Area Not In District